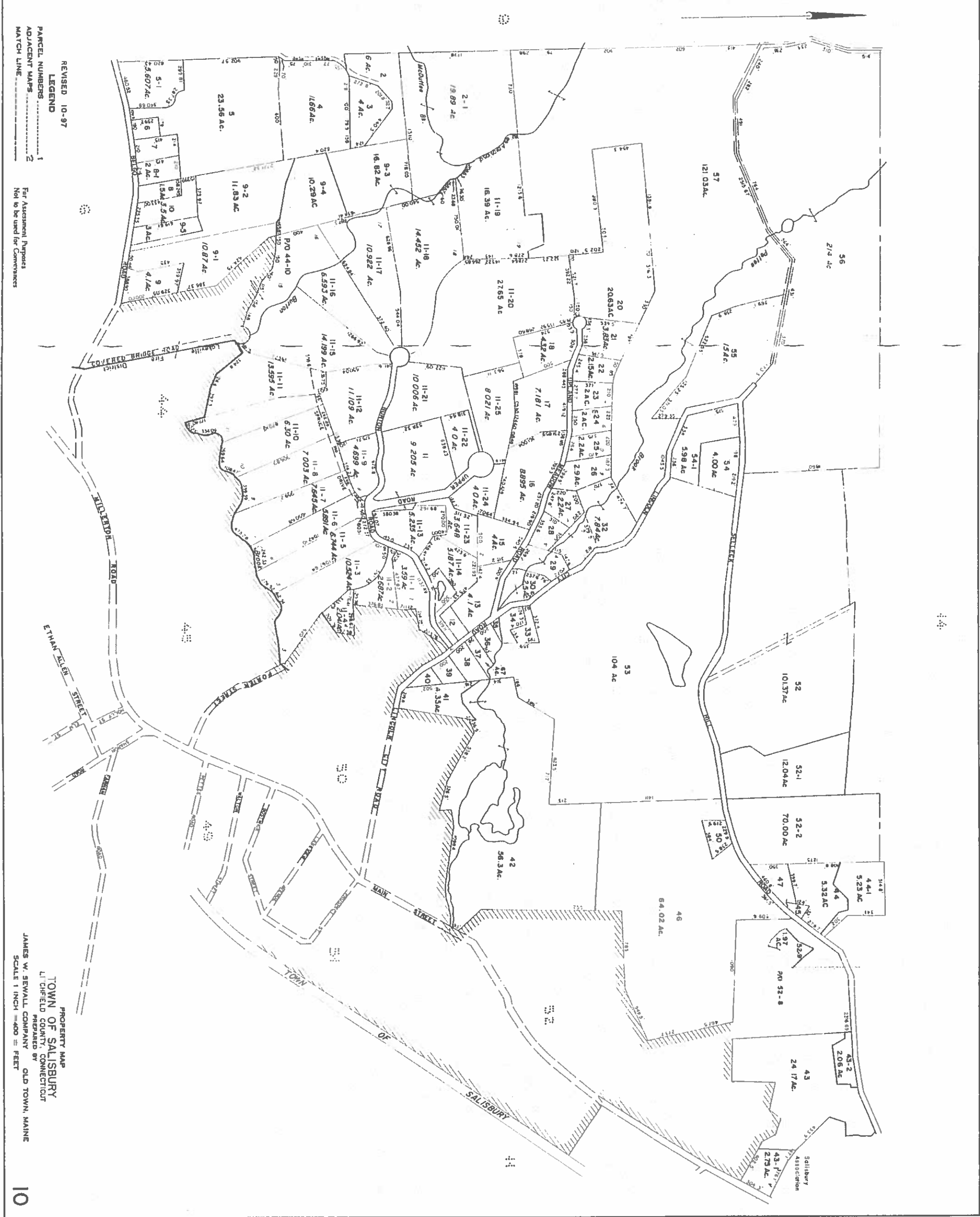


REVISED MARCH 2016

NOT TO BE USED FOR CONVEYANCES
OR ASSESSMENT PURPOSES ONLY
NOT A TRUE SURVEY



REVISED 10-97

LEGEND

1 PARCEL NUMBERS

2 ADJACENT MAPS

3 MATCH LINE

For Assessment Purposes
Not to be used for Conveyances

PROPERTY MAP
TOWN OF SALISBURY
LITCHFIELD COUNTY, CONNECTICUT
PREPARED BY
JAMES W. SEWALL COMPANY
SCALE 1 INCH = 400 FEET