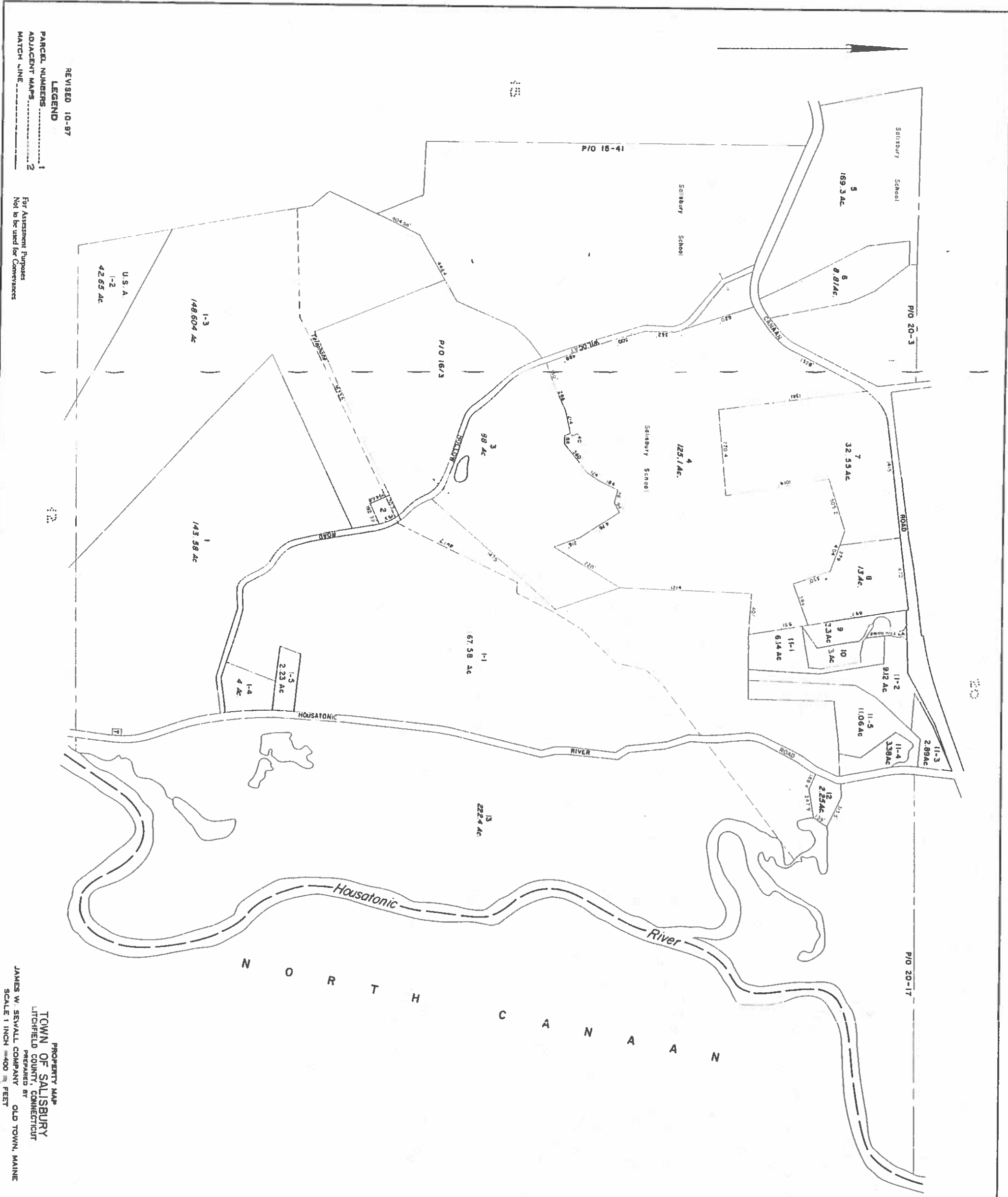


REVISED MARCH 2016

NOT TO BE USED FOR CONVEYANCES
OR ASSESSMENT PURPOSES ONLY
NOT A TRUE SURVEY



REVISED 10-97

LEGEND

PARCEL NUMBERS: 1

ADJACENT MAPS: 2

MATCH LINE: 2

For Assessment Purposes
Not to be used for Conveyances

PROPERTY MAP
TOWN OF SALISBURY
LITCHFIELD COUNTY, CONNECTICUT
PREPARED BY
JAMES W. SEWALL COMPANY
SCALE 1 INCH = 400 FEET