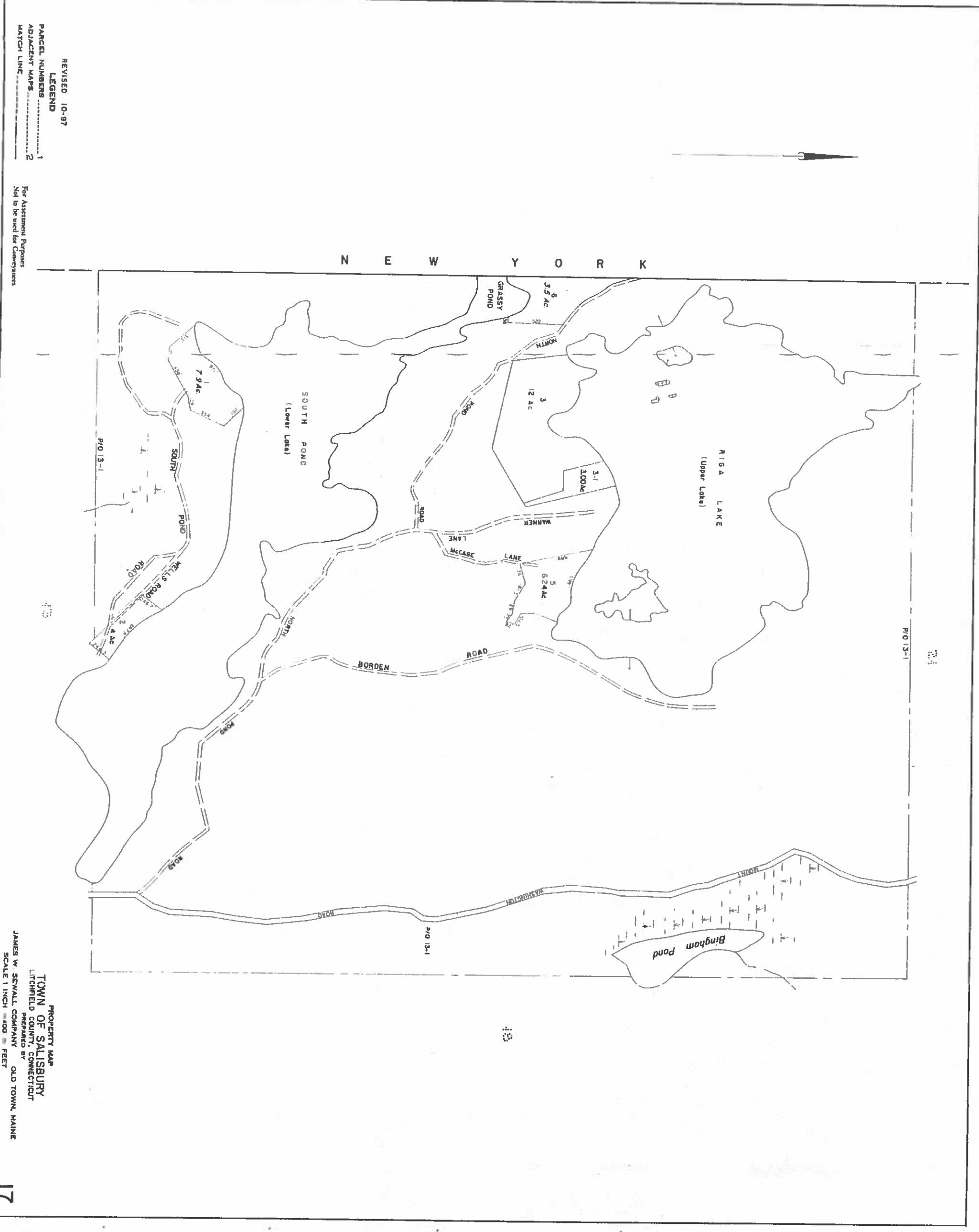


REVISED MARCH 2016

NOT TO BE USED FOR CONVEYANCES
FOR ASSESSMENT PURPOSES ONLY
NOT A TRUE SURVEY



REVISED 10-97
LEGEND
 PARCEL NUMBERS 1
 ADJACENT MAPS 2
 MATCH LINE 2

For Assessment Purposes
 Not to be used for Conveyances

PROPERTY MAP
 TOWN OF SALISBURY
 LITCHFIELD COUNTY, CONNECTICUT
 PREPARED BY
 JAMES W. SEWALL COMPANY
 OLD TOWN, MAINE
 SCALE 1 INCH = 400 FEET