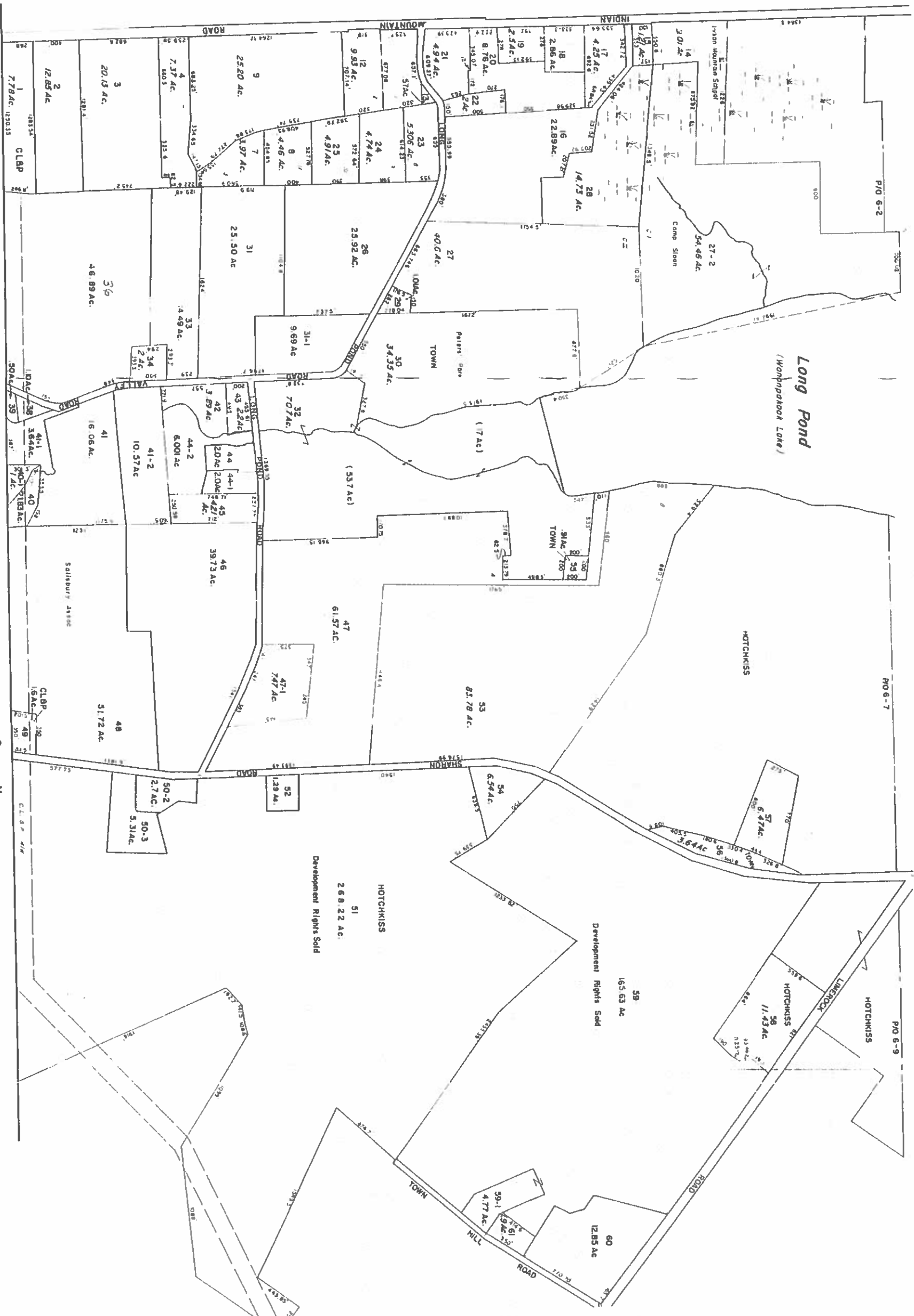


REVISED MARCH 2016

NOT TO BE USED FOR CONVEYANCES
OR ASSESSMENT PURPOSES ONLY
NOT A TRUE SURVEY

REVISED 10-97
LEGEND
1 PARCEL NUMBERS
2 ADJACENT MAPS
3 MATCH LINE

For Assessment Purposes
Not to be used for Conveyances



PROPERTY MAP
TOWN OF SALISBURY
LITCHFIELD COUNTY, CONNECTICUT
PREPARED BY
JAMES W. SEWALL COMPANY
OLD TOWN, MAINE
SCALE 1 INCH = 400 FEET