



REVISED MARCH 2016

NOT TO BE USED FOR CONVEYANCES
FOR ASSESSMENT PURPOSES ONLY
NOT A TRUE SURVEY

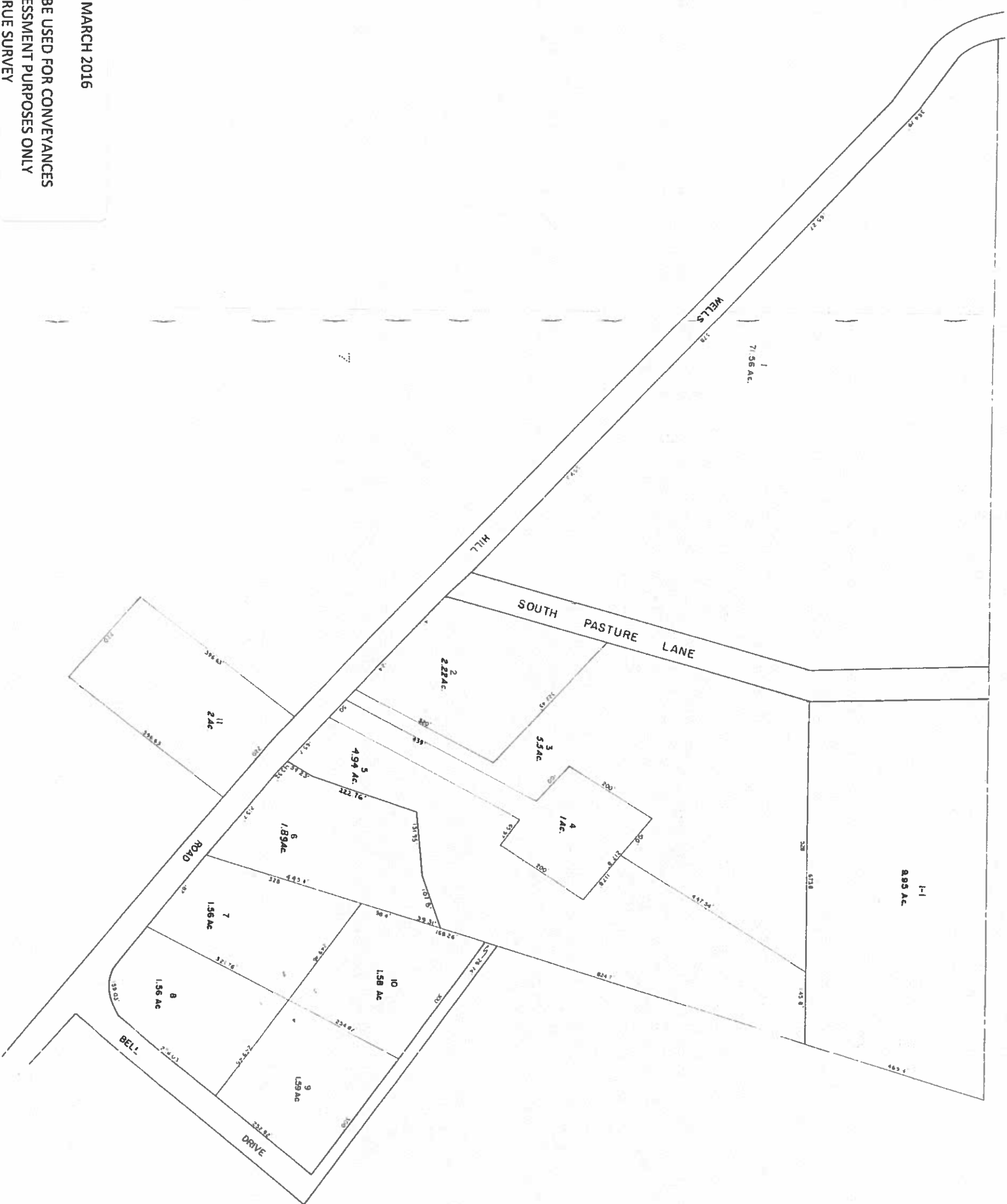
LEGEND

PARCEL NUMBERS 1

ADJACENT MAPS 2

MATCH LINE - - - - -

For Assessment Purposes
Not to be used for Conveyances



PROPERTY MAP
TOWN OF SALISBURY
LITCHFIELD COUNTY, CONNECTICUT
PREPARED BY
JAMES W. SEWALL COMPANY
OLD TOWN, MAINE
SCALE 1 INCH = 100 FEET