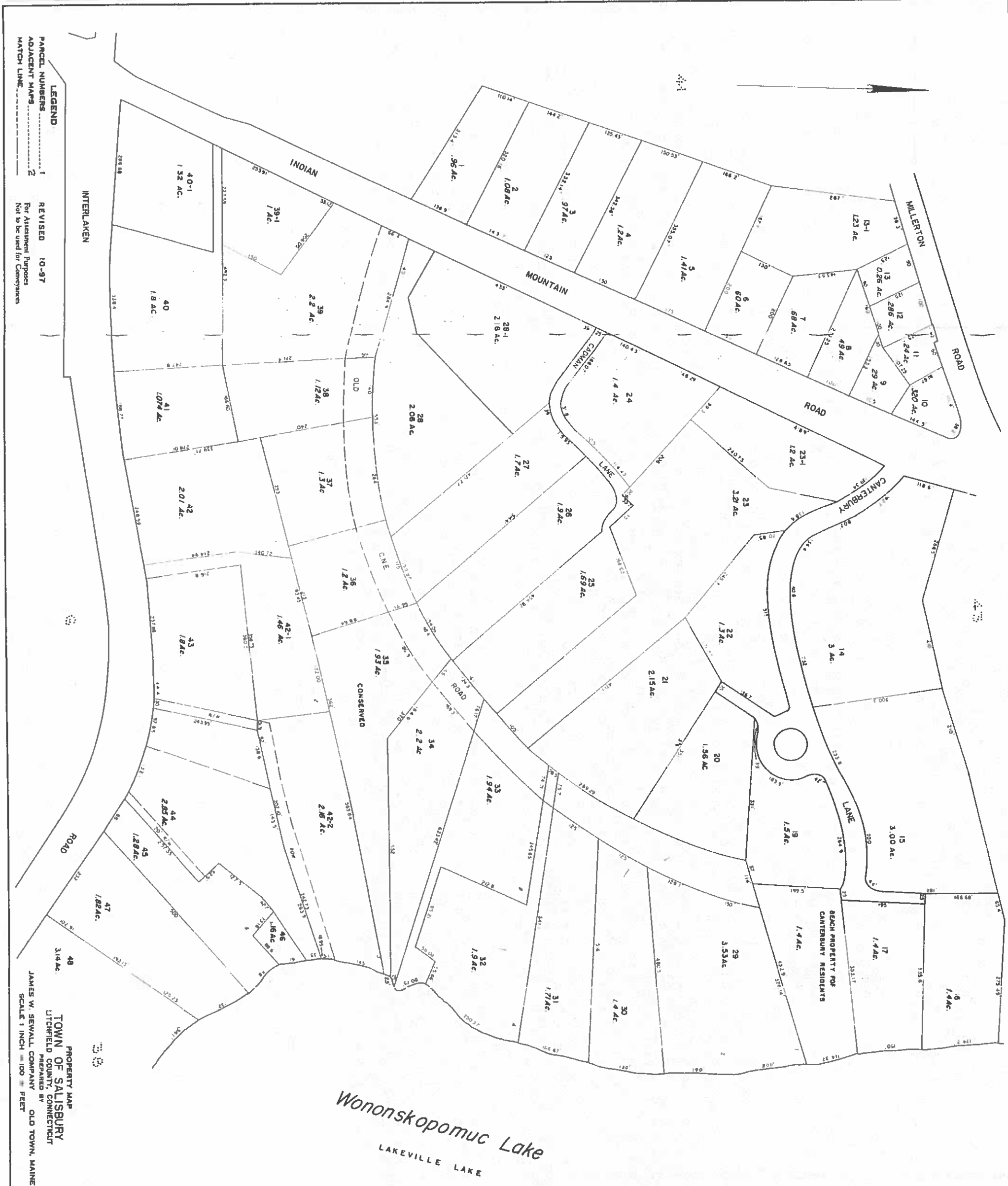


REVISED MARCH 2016

NOT TO BE USED FOR CONVEYANCES
FOR ASSESSMENT PURPOSES ONLY
NOT A TRUE SURVEY



LEGEND
PARCEL NUMBERS 1
ADJACENT MAPS 2
MATCH LINE 3

REVISED 10-97
For Assessment Purposes
Not to be used for Conveyances

PROPERTY MAP
TOWN OF SALISBURY
LITCHFIELD COUNTY, CONNECTICUT
PREPARED BY
JAMES W. SEWALL COMPANY
OLD TOWN, MAINE
SCALE 1 INCH = 100 FEET