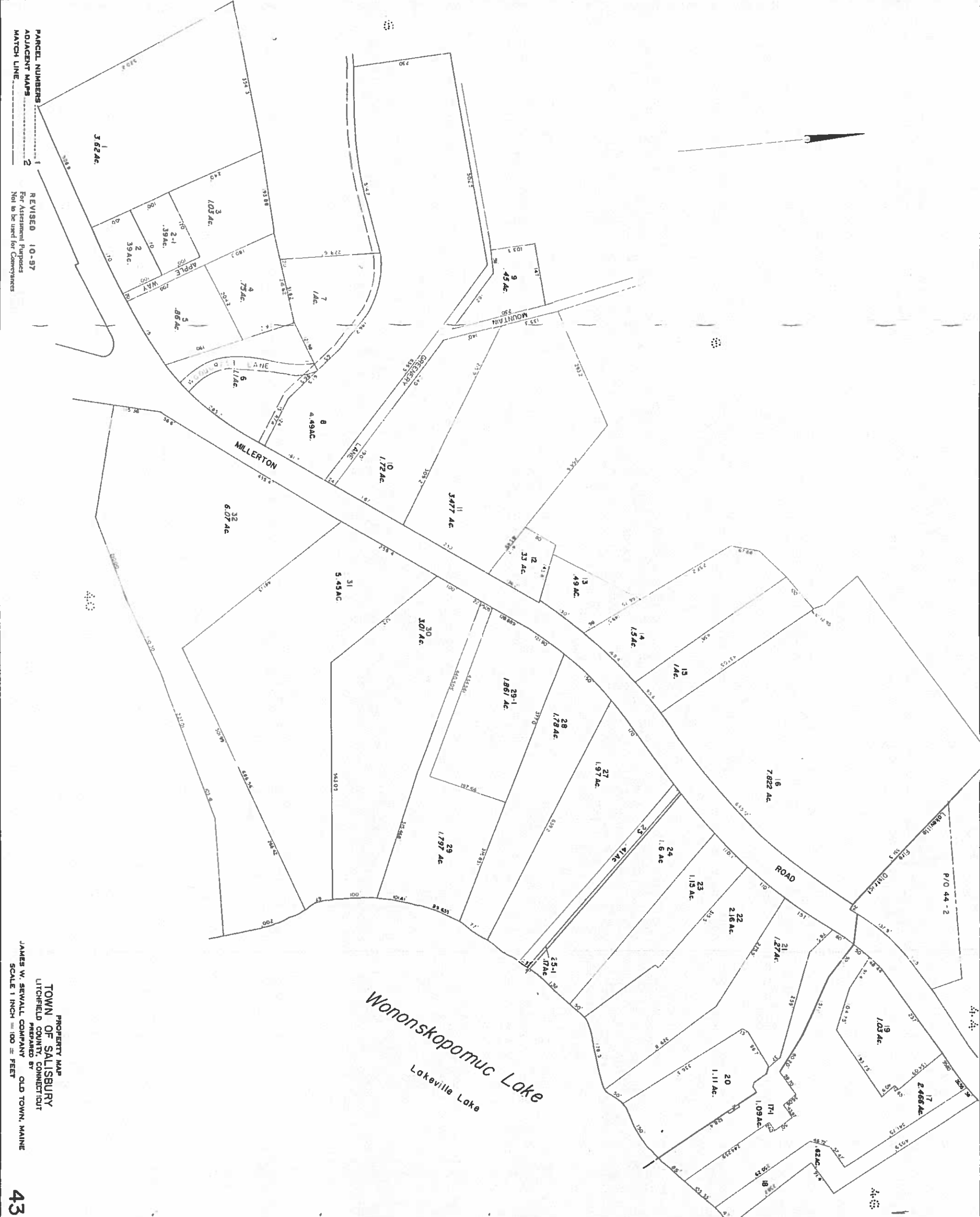


REVISED MARCH 2016

NOT TO BE USED FOR CONVEYANCES
FOR ASSESSMENT PURPOSES ONLY
NOT A TRUE SURVEY



PARCEL NUMBERS
ADJACENT MAPS
MATCH LINE

REVISED 10-97
For Assessment Purposes
Not to be used for Conveyances

PROPERTY MAP
TOWN OF SALISBURY
LITCHFIELD COUNTY, CONNECTICUT
JAMES W. SEWALL COMPANY
SCALE 1 INCH = 100 FEET