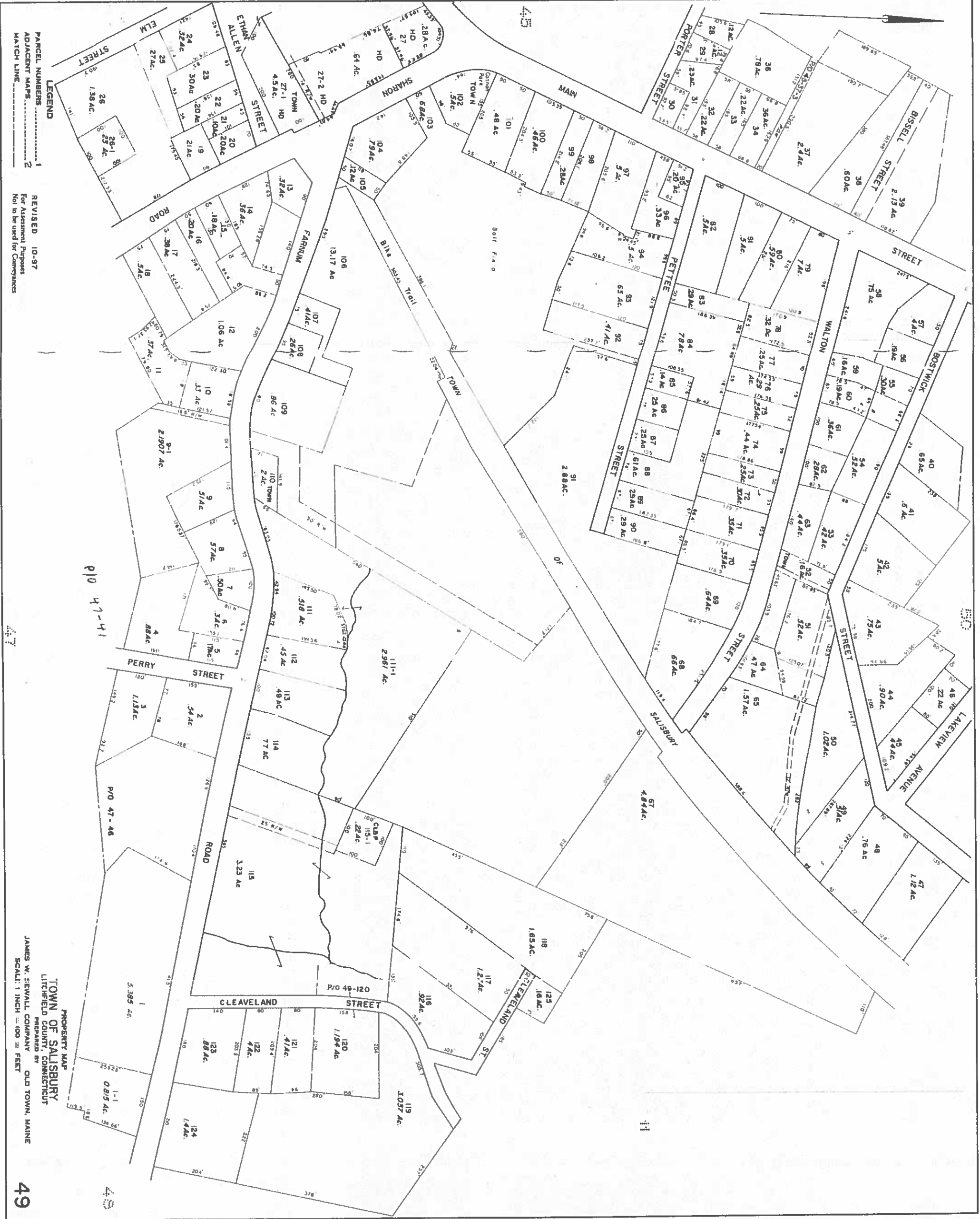


REVISED MARCH 2016

NOT TO BE USED FOR CONVEYANCES  
OR ASSESSMENT PURPOSES ONLY  
NOT A TRUE SURVEY



**LEGEND**

1 PARCEL NUMBERS

2 ADJACENT MAPS

3 MATCH LINE

REVISED 10-97

For Assessment Purposes

Not to be used for Conveyances

PROPERTY MAP

TOWN OF SALISBURY

LITCHFIELD COUNTY, CONNECTICUT

PREPARED BY

JAMES W. SEWELL COMPANY

OLD TOWN, MAINE

SCALE: 1 INCH = 100 FEET