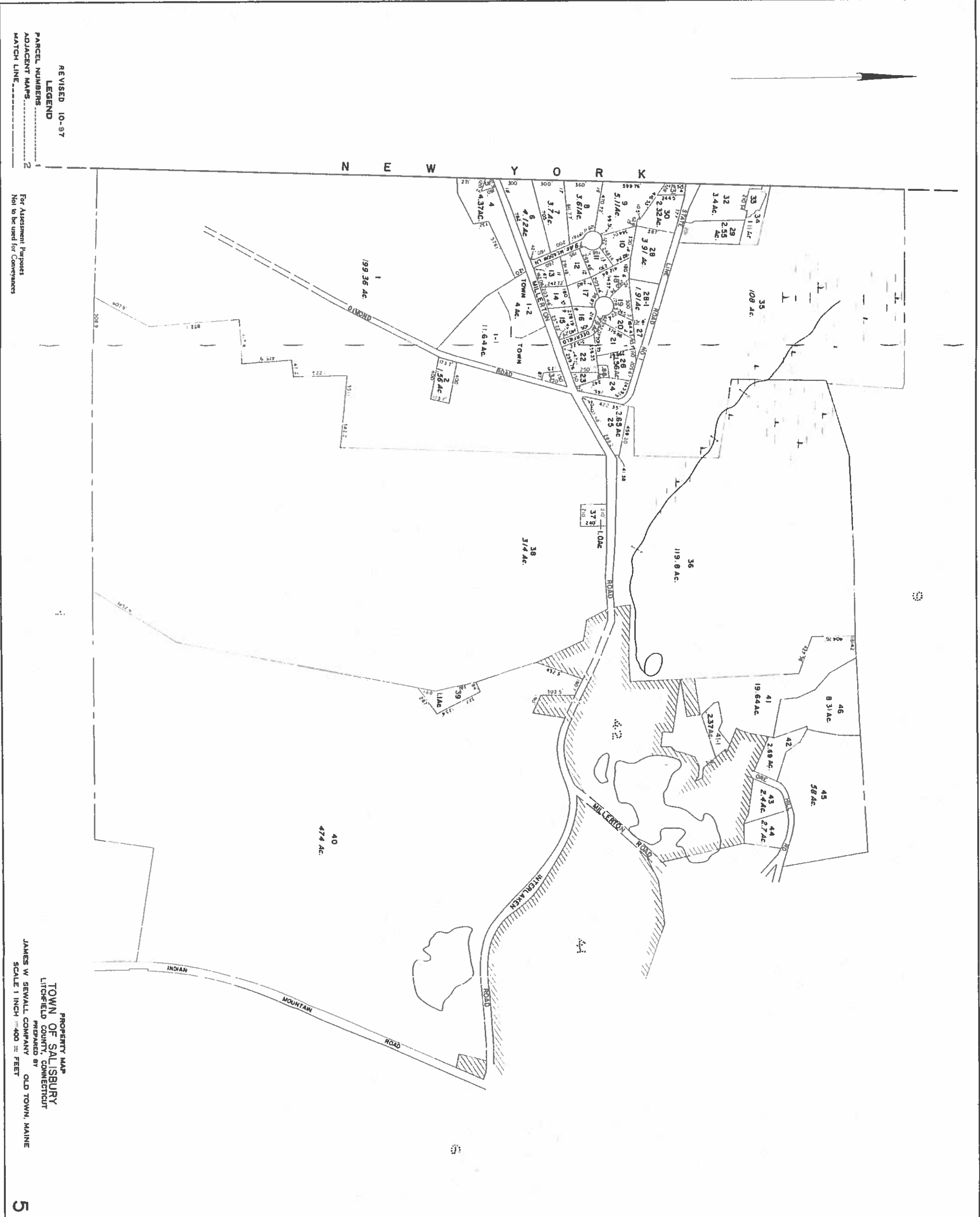


REVISED MARCH 2016

NOT TO BE USED FOR CONVEYANCES
FOR ASSESSMENT PURPOSES ONLY
NOT A TRUE SURVEY



REVISED 10-97
LEGEND
PARCEL NUMBERS 1
ADJACENT MAPS 2
MATCH LINE 2

For Assessment Purposes
Not to be used for Conveyances

PROPERTY MAP
TOWN OF SALISBURY
LITCHFIELD COUNTY, CONNECTICUT
PREPARED BY
JAMES W SEWALL COMPANY
OLD TOWN, MAINE
SCALE 1 INCH = 400 FEET