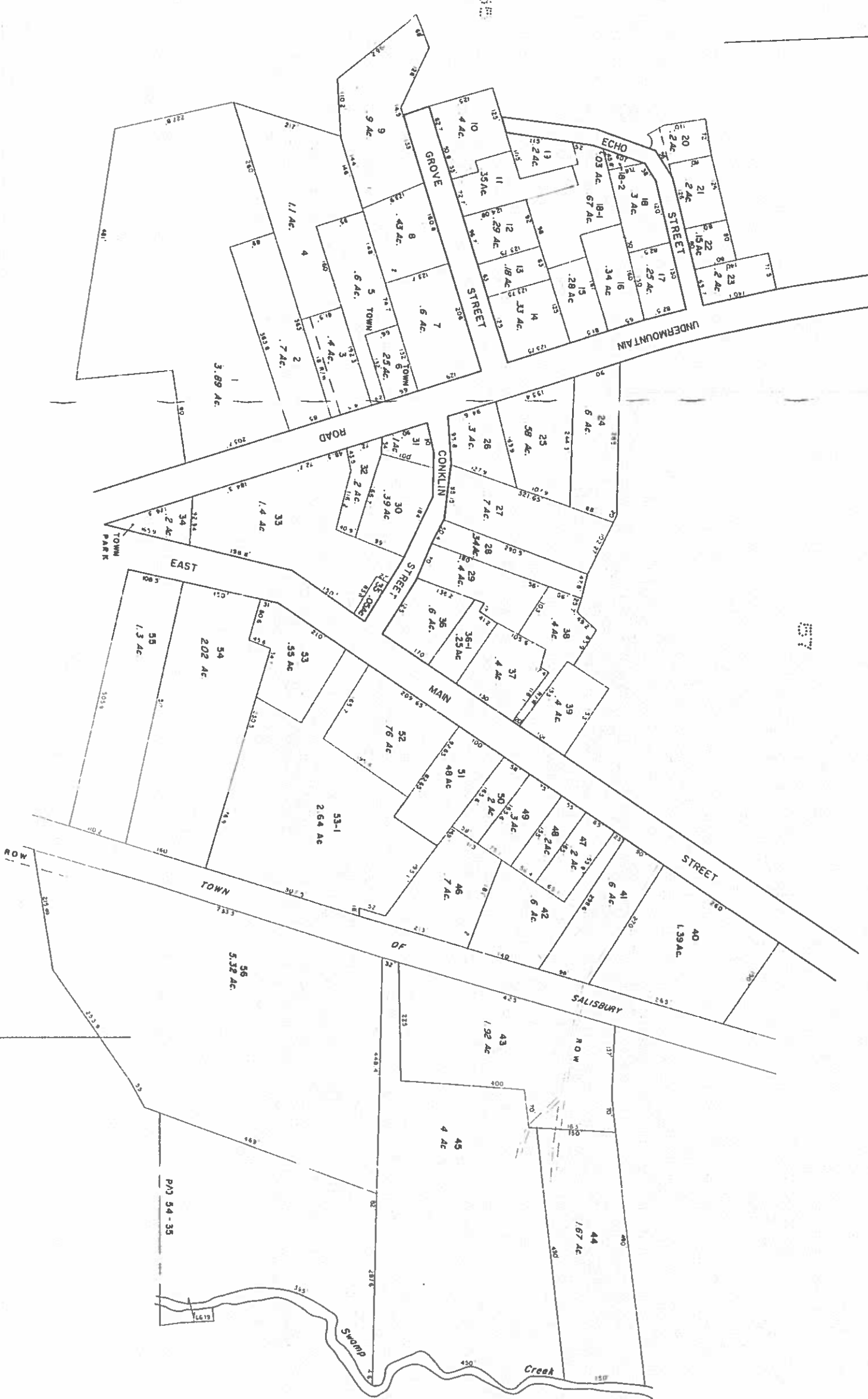


REVISED MARCH 2016

NOT TO BE USED FOR CONVEYANCES
FOR ASSESSMENT PURPOSES ONLY
NOT A TRUE SURVEY

LEGEND
PARCEL NUMBERS 1
ADJACENT MAPS 2
MATCH LINE

For Assessment Purposes
Not to be used for Conveyances



PROPERTY MAP
TOWN OF SALISBURY
LITCHFIELD COUNTY, CONNECTICUT
PREPARED BY
JAMES W. SEWELL COMPANY
OLD TOWN, MAINE
SCALE: 1 INCH = 100 FEET