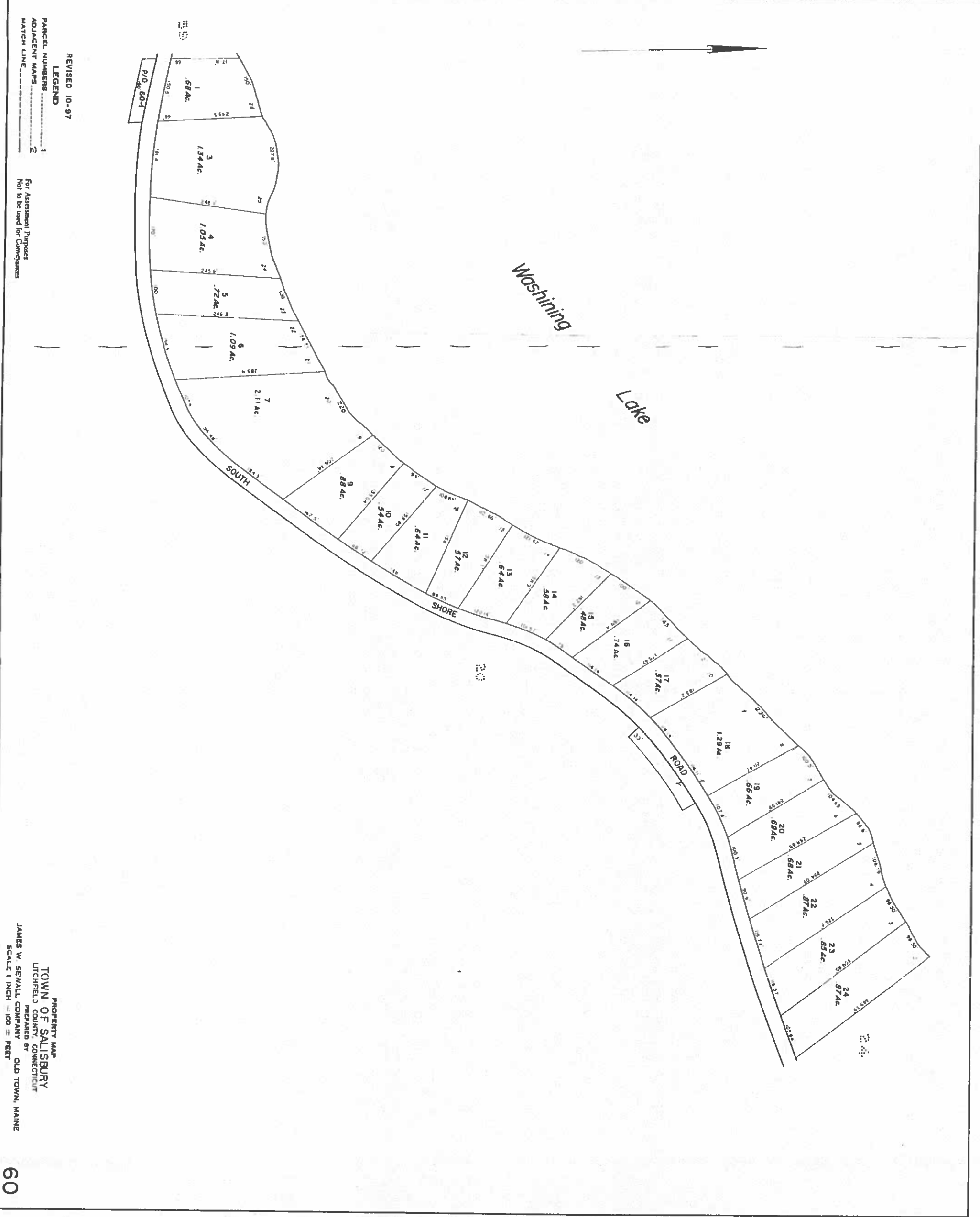


REVISED MARCH 2016

NOT TO BE USED FOR CONVEYANCES
FOR ASSESSMENT PURPOSES ONLY
NOT A TRUE SURVEY



REVISED 10-97
LEGEND
1 PARCEL NUMBERS
2 ADJACENT MAPS
MATCH LINE

For Assessment Purposes
Not to be used for Conveyances

PROPERTY MAP
TOWN OF SALISBURY
LITCHFIELD COUNTY, CONNECTICUT
PREPARED BY
JAMES W. SEWALL COMPANY
SCALE 1 INCH = 100 FEET