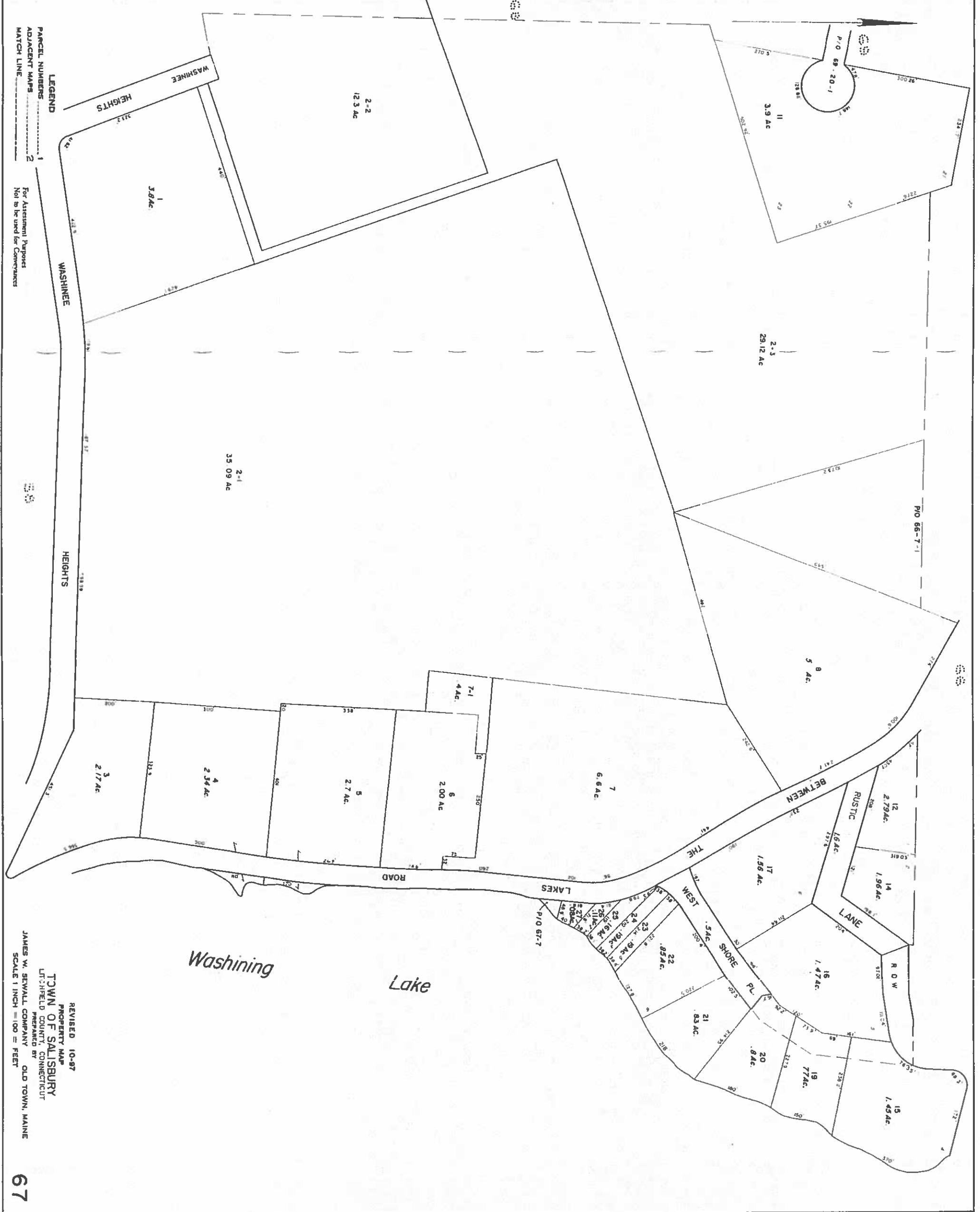


REVISED MARCH 2016

NOT TO BE USED FOR CONVEYANCES
FOR ASSESSMENT PURPOSES ONLY
NOT A TRUE SURVEY



LEGEND

PANEL NUMBERS 1

ADJACENT MAPS 2

MATCH LINE

For Assessment Purposes
Not to be used for Conveyances

REVISED 10-97

PROPERTY MAP

TOWN OF SALISBURY

LITCHFIELD COUNTY, CONNECTICUT

PREPARED BY

JAMES W. SEWALL COMPANY

OLD TOWN, MAINE

SCALE 1 INCH = 100 FEET