

Salisbury Pathways Committee

Sixth Meeting

Date and Time: Monday, February 23, 2015, at 5:30 p.m.

Location: Salisbury Town Hall, Downstairs Meeting Room, first floor.

Present: Pat Hackett, Katherine Kiefer, Natalia Smirnova, Frank Shinneman, Chris Williams, two citizens.

Minutes:

5:30 p.m. – call to order.

1. Approval of the minutes of December 15, 2014, meeting.

Minutes of December 15, 2014 were approved unanimously as written.

2. Report STEAP grant schedule.

The schedule was not obtained. Obtain for next meeting in order to know when the deadline for STEAP application is.

3. Report the outcome of January 5th Selectmen's meeting request for \$2,500 grant for feasibility study of the sidewalk extension from Meadow Street to Fire House.

Kitty Kiefer reported that our request was declined.

Pat Hackett will call Robert M. Gilcrest, Project Manager, at Allied Engineering Associates, LLC to discuss the details of the \$2,500 estimate. The good faith estimate is attached.

Kitty Kiefer will put this on the agenda for March 2, 2015 Selectmen Meeting. Pat Hackett will be at the meeting to explain the details of the estimate and why the money is essential to be allocated to this project.

4. Report the outcome of the attempt to connect with various organizations, which are working to support walking and biking in our area.

- Frank Shinneman reported that he connected with Kelly Kennedy at BikeWalkCT. She indicated that they would like to work with us to foster biking and walking in the area. Of 169 Connecticut towns, Salisbury ranks # 60.
- Frank Shinneman also connected to the Appalachian Mountain Club. They are very enthusiastic about our efforts to create pathways connecting Appalachian Trails to the

center of town. This would be supported by our work on the priority 2 – “Triangle with Horns”. They will support with letters of reference if we need them.

- Chris Williams suggested researching the schedule of roads’ repairs by the state of CT. He will call Aaron Stevens, Head Planner for District 4 (us) to find out the schedule of repairs, get on that schedule, or make a formal request to get on that schedule. It will be easier and cheaper to implement the “Triangle with Horns” work if it is done concurrently with the road repairs.

5. ROW that would give access from 44 down Brook Street and to the rail trail and its impact on the sidewalks.

Pat Hackett reported that the town took over from the Salisbury Association the access from route 44 to the Rail Trail through Brook Street. Pat was ready to initiate a discussion on this, but we decided to move this item to the next meeting when we plan to hear the “History of the Rail Trail” presentation by Chris Williams.

6. Citizens Comments.

No comments were made.

7. New business.

Chris Williams proposed to give the Committee a presentation about the history of the Rail Trail at the next meeting. Everyone agreed that it will be very informative.

8. Preliminary Agenda for March 16 meeting

1. “History of the Rail Trail” presentation by Chris Williams;
2. Right of Way that would give access from Route 44 through Brook Street to the Rail Trail, and its impact on the multi-modal transportation in town.
3. Report by Kitty Kiefer and Pat Hackett on the results of the request for \$2,500 for feasibility study at the March 2 Selectmen meeting.

Meeting adjourned at 6:20 p.m.

Minutes respectfully submitted by Natalia V. Smirnova, Secretary, on February 24, 2015.

Minutes approved unanimously as written on March 16, 2015.

Natalia Smirnova

From: Robert Gilchrest <aea.bobg@gmail.com>
Sent: Monday, December 01, 2014 12:01 PM
To: Natalia Smirnova
Cc: George Johannesen
Subject: RE: Quote for a Feasibility Study

Natalia- Hope you had a great Holiday...as requested please find below the information you were looking for:

Salisbury Pathways Project

Meadow Street to Brook Street (New Firehouse)

Feasibility Study/Schematic Design

Estimated Fee: \$2,500 (3.7% of Project Cost)

Services to include the following:

1. Mapping Research (1/2 day)
2. Preliminary Base Map (1 day)
3. Site Visit (1/2 day)
4. Preliminary Layout (1/2 day)
5. Potential Cost based on Schematic Design (1/4 day)
6. Present to committee (1/4 day)

Potential Pre-design Estimate (based on 800 LF 5' walk):

Walk excavation:	\$1,500
Earthwork/Grading:	\$2,000
Existing driveway removal:	\$1,500
New walkway base:	\$5,000
New 5' concrete walk:	\$13,500
Pedestrian bridge over drainage swale:	\$35,000
Traffic control:	\$6,500
<u>Seeding/landscaping:</u>	<u>\$2,000</u>
TOTAL:	\$67,000*

*does not include contingency, design fees, surveying, permitting, taxes, and contractor's overhead and profit

Bob

Robert M. Gilchrest, Project Manager
Allied Engineering Associates, LLC
95 Main Street, 3rd Floor
P.O. Box 726

Connecticut 2014 Bike-friendly, Walk-friendly Town Scorecard

LEGEND: ■ Yes, 25 points □ No, 5 points IDK I don't know, 1 point △ No response, 0 points

Rank	Town	Bike Ped Plan	Bike Ped Task Force	Public Outreach Efforts	Complete Streets Policy	Municipal Leadership and Engagement Score (of 100)	Bike Walk Friendly Score (of 100)	Combined Final Score (of 100)
1	Simsbury	■	■	■	□	80.0	69.0	74.5
2	New Haven	■	■	■	■	100.0	47.1	73.6
3	New Britain	■	■	■	IDK	76.0	53.9	65.0
4	Glastonbury	■	■	□	□	60.0	59.3	59.7
5	Middletown	■	■	IDK	■	76.0	42.1	59.1
6	Canton	■	□	■	□	60.0	57.6	58.8
7	Weston	■	■	■	□	80.0	34.7	57.4
8	Hamden	□	□	■	■	60.0	52.9	56.5
9	Plainville	■	■	□	□	60.0	51.4	55.7
10	South Windsor	□	■	△	■	55.0	51.5	53.2
11	Coventry	□	■	□	■	60.0	43.8	51.9
12	Torrington	■	□	□	■	60.0	43.1	51.6
13	Meriden	■	■	IDK	□	56.0	46.3	51.1
14	Milford	■	IDK	IDK	■	52.0	49.6	50.8
14	Ridgefield	■	■	IDK	□	56.0	45.7	50.8
15	Hartford	■	□	■	IDK	56.0	41.7	48.8
15	Manchester	■	□	□	□	40.0	56.4	48.2
17	Stonington	□	■	IDK	■	56.0	39.5	47.7
18	Old Saybrook	■	□	□	□	40.0	54.6	47.3
19	Southbury	■	□	□	□	40.0	52.1	46.1
20	Colchester	■	□	IDK	□	36.0	55.7	45.9
20	Somers	□	□	□	□	20.0	71.9	45.9
21	Andover	□	□	IDK	□	16.0	75.0	45.5
21	Lebanon	□	IDK	□	□	16.0	75.0	45.5
22	East Lyme	■	□	IDK	□	36.0	53.1	44.6
23	Barkhamsted	□	□	□	□	20.0	68.8	44.4
24	Madison	□	□	□	□	20.0	68.5	44.3
25	Essex	■	□	IDK	□	36.0	49.9	43.0
25	Stratford	■	□	□	□	40.0	46.1	43.0
26	Hebron	□	□	□	□	20.0	65.6	42.8
27	Woodbridge	□	■	IDK	□	36.0	47.5	41.8
28	Groton	■	□	□	□	40.0	42.2	41.1
29	Sprague	□	□	IDK	□	16.0	65.0	40.5



Rank	Town	Bike Ped Plan	Bike Ped Task Force	Public Outreach Efforts	Complete Streets Policy	Municipal Leadership and Engagement Score (of 100)	Bike Walk Friendly Score (of 100)	Combined Final Score (of 100)
30	Wethersfield	☐	☐	IDK	☐	16.0	64.7	40.4
31	Enfield	☐	☐	■	☐	40.0	40.6	40.3
32	Washington	☐	☐	IDK	☐	16.0	62.5	39.3
33	East Hampton	☐	☐	IDK	☐	16.0	60.8	38.4
34	New Milford	☐	☐	■	☐	40.0	36.0	38.0
35	Ellington	☐	☐	☐	☐	20.0	55.6	37.8
35	Franklin	☐	☐	☐	☐	20.0	55.5	37.8
35	Suffield	☐	☐	IDK	☐	16.0	59.6	37.8
36	Windsor Locks	☐	☐	■	☐	40.0	33.9	36.9
37	Chester	☐	☐	IDK	IDK	12.0	61.3	36.6
38	Windham	☐	☐	IDK	☐	16.0	56.5	36.3
39	Union	☐	☐	IDK	IDK	12.0	60.0	36.0
40	Columbia	☐	☐	☐	☐	20.0	51.3	35.6
40	Southington	☐	☐	☐	☐	20.0	51.2	35.6
41	East Hartford	☐	☐	IDK	☐	16.0	54.6	35.3
42	Greenwich	☐	☐	☐	☐	20.0	50.4	35.2
43	Durham	☐	☐	IDK	☐	16.0	54.2	35.1
43	Windsor	☐	☐	☐	☐	20.0	50.2	35.1
44	Newtown	■	☐	IDK	IDK	32.0	38.0	35.0
47	Granby	☐	☐	☐	☐	20.0	49.9	34.9
48	Kent	☐	☐	IDK	IDK	12.0	57.5	34.8
49	Eastford	☐	☐	IDK	☐	16.0	53.2	34.6
50	Clinton	☐	■	IDK	☐	36.0	32.5	34.3
51	New Canaan	☐	☐	☐	☐	20.0	48.3	34.2
52	Middlefield	☐	☐	IDK	☐	16.0	52.1	34.1
53	Guilford	☐	☐	IDK	☐	16.0	52.0	34.0
54	Avon	☐	☐	☐	☐	20.0	47.6	33.8
55	Stafford	☐	☐	IDK	☐	16.0	50.4	33.2
56	Bolton	☐	IDK	IDK	☐	12.0	53.9	32.9
57	Ledyard	☐	☐	IDK	☐	16.0	49.6	32.8
58	Branford	☐	☐	IDK	☐	16.0	49.5	32.7
59	Brookfield	☐	☐	■	☐	40.0	25.0	32.5
60	Mansfield	☐	△	△	△	5.0	58.8	31.9
60	Salisbury	△	△	△	△	0.0	63.8	31.9
61	New Hartford	☐	☐	IDK	☐	16.0	47.5	31.8
62	Haddam	☐	☐	☐	☐	20.0	42.4	31.2



Rank	Town	Bike Ped Plan	Bike Ped Task Force	Public Outreach Efforts	Complete Streets Policy	Municipal Leadership and Engagement Score (of 100)	Bike Walk Friendly Score (of 100)	Combined Final Score (of 100)
63	Vernon	△	△	△	△	0.0	62.2	31.1
64	East Haddam	□	□	IDK	□	16.0	46.0	31.0
65	Litchfield	□	□	△	△	10.0	51.2	30.6
66	Cromwell	□	□	IDK	□	16.0	45.0	30.5
66	Wallingford	□	□	IDK	□	16.0	45.1	30.5
67	Monroe	□	□	□	□	20.0	40.6	30.3
68	Plymouth	△	△	△	△	0.0	60.0	30.0
68	Willington	△	△	△	△	0.0	60.0	30.0
69	Westbrook	△	△	△	△	0.0	59.6	29.8
70	Easton	△	△	△	△	0.0	58.8	29.4
71	Deep River	□	□	IDK	□	16.0	42.5	29.3
72	Bristol	□	□	□	□	20.0	38.1	29.1
73	Bethany	△	△	△	△	0.0	57.5	28.8
74	Tolland	□	□	IDK	□	16.0	41.3	28.7
75	Cheshire	△	△	△	△	0.0	57.2	28.6
75	Farmington	△	△	△	△	0.0	57.3	28.6
76	Bethel	△	△	△	△	0.0	56.9	28.5
77	Norfolk	△	△	△	△	0.0	56.3	28.1
78	Bridgewater	■	□	IDK	■	56.0	0.0	28.0
79	Derby	□	□	IDK	IDK	12.0	43.8	27.9
80	Canaan	□	□	IDK	IDK	12.0	43.1	27.6
81	Chaplin	△	△	△	△	0.0	54.9	27.5
82	Westport	□	□	□	□	20.0	34.6	27.3
83	West Hartford	△	△	△	△	0.0	54.1	27.1
84	Orange	□	□	IDK	□	16.0	37.5	26.8
84	Woodstock	□	□	□	IDK	16.0	37.5	26.8
85	East Granby	△	△	△	△	0.0	52.5	26.3
85	Newington	IDK	IDK	□	□	12.0	40.5	26.3
86	Norwich	△	△	△	△	0.0	52.1	26.1
86	Old Lyme	□	□	IDK	□	16.0	36.1	26.1
87	Putnam	□	□	IDK	□	16.0	35.0	25.5
88	Berlin	□	□	IDK	IDK	12.0	38.6	25.3
88	Bethlehem	△	△	△	△	0.0	50.6	25.3
89	Watertown	□	□	IDK	□	16.0	34.4	25.2
90	North Branford	□	□	IDK	□	16.0	34.2	25.1
91	East Windsor	□	□	△	□	15.0	34.6	24.8



Rank	Town	Bike Ped Plan	Bike Ped Task Force	Public Outreach Efforts	Complete Streets Policy	Municipal Leadership and Engagement Score (of 100)	Bike Walk Friendly Score (of 100)	Combined Final Score (of 100)
92	North Canaan	△	△	△	△	0.0	48.8	24.4
92	Shelton	△	△	△	△	0.0	48.8	24.4
93	Burlington	IDK	IDK	△	△	2.0	46.7	24.3
94	Montville	□	□	IDK	□	16.0	32.3	24.1
95	Lisbon	□	□	IDK	□	16.0	31.7	23.8
96	East Haven	□	□	IDK	□	16.0	29.5	22.8
97	Winchester	△	△	△	△	0.0	45.3	22.7
98	Fairfield	△	△	△	△	0.0	44.8	22.4
99	Trumbull	△	△	△	△	0.0	43.8	21.9
100	Brooklyn	□	□	IDK	□	16.0	27.5	21.8
100	Cornwall	□	IDK	□	□	16.0	27.5	21.8
100	New London	△	△	△	△	0.0	43.6	21.8
101	Killingworth	△	△	△	△	0.0	43.4	21.7
101	Rocky Hill	△	△	△	△	0.0	43.3	21.7
101	Wilton	△	△	△	△	0.0	43.4	21.7
102	Redding	□	□	IDK	□	16.0	26.9	21.4
103	Marlborough	△	△	△	△	0.0	42.5	21.3
104	Bloomfield	△	△	△	△	0.0	42.0	21.0
105	West Haven	△	△	△	△	0.0	41.7	20.8
106	Darien	□	□	IDK	IDK	12.0	29.4	20.7
107	Ashford	□	□	□	□	20.0	21.3	20.6
108	Killingly	□	□	IDK	□	16.0	25.0	20.5
108	Thompson	□	□	IDK	□	16.0	25.0	20.5
109	Norwalk	△	△	△	△	0.0	40.4	20.2
110	Morris	□	□	□	□	20.0	20.0	20.0
110	Portland	△	△	△	△	0.0	40.1	20.0
111	Griswold	□	□	IDK	□	16.0	22.5	19.3
111	North Stonington	□	□	IDK	□	16.0	22.5	19.3
112	Hampton	△	△	△	△	0.0	37.5	18.8
113	Beacon Falls	■	□	IDK	□	36.0	0.0	18.0
113	Preston	■	□	IDK	□	36.0	0.0	18.0
113	Salem	□	■	IDK	□	36.0	0.0	18.0
114	Waterford	△	△	△	△	0.0	35.6	17.8
115	Stamford	△	△	△	△	0.0	34.4	17.2
116	Bridgeport	△	△	△	△	0.0	32.9	16.4
117	Prospect	△	△	△	△	0.0	32.5	16.3



Rank	Town	Bike Ped Plan	Bike Ped Task Force	Public Outreach Efforts	Complete Streets Policy	Municipal Leadership and Engagement Score (of 100)	Bike Walk Friendly Score (of 100)	Combined Final Score (of 100)
118	North Haven	△	△	△	△	0.0	31.9	15.9
119	Pomfret	△	△	△	△	0.0	29.3	14.6
120	New Fairfield	□	□	IDK	□	16.0	12.5	14.3
121	Waterbury	△	△	△	△	0.0	28.2	14.1
122	Ansonia	△	△	△	△	0.0	21.3	10.6
123	Danbury	△	△	△	△	0.0	21.0	10.5
124	Canterbury	□	□	□	□	20.0	0.0	10.0
124	Goshen	□	□	□	□	20.0	0.0	10.0
124	Naugatuck	□	□	□	□	20.0	0.0	10.0
124	Plainfield	□	□	□	□	20.0	0.0	10.0
124	Sherman	□	□	□	□	20.0	0.0	10.0
124	Wolcott	△	△	△	△	0.0	20.0	10.0
125	Harwinton	□	□	IDK	□	16.0	0.0	8.0
125	Lyme	□	□	IDK	□	16.0	0.0	8.0
125	Roxbury	□	□	IDK	□	16.0	0.0	8.0
125	Sterling	□	□	IDK	□	16.0	0.0	8.0
125	Warren	□	□	IDK	□	16.0	0.0	8.0
125	Woodbury	□	□	IDK	□	16.0	0.0	8.0
126	Bozrah	△	△	△	△	0.0	0.0	0.0
126	Colebrook	△	△	△	△	0.0	0.0	0.0
126	Hartland	△	△	△	△	0.0	0.0	0.0
126	Middlebury	△	△	△	△	0.0	0.0	0.0
126	Oxford	△	△	△	△	0.0	0.0	0.0
126	Scotland	△	△	△	△	0.0	0.0	0.0
126	Seymour	△	△	△	△	0.0	0.0	0.0
126	Sharon	△	△	△	△	0.0	0.0	0.0
126	Thomaston	△	△	△	△	0.0	0.0	0.0
126	Voluntown	△	△	△	△	0.0	0.0	0.0

LEGEND: ■ Yes, 25 points □ No, 5 points IDK I don't know, 1 point △ No response, 0 points

Salisbury Pathways Committee

Seventh Meeting

Date and Time: Monday, for March 16, 2015, at 5:30 p.m.

Location: Salisbury Town Hall, Downstairs Meeting Room, first floor.

Present: Pat Hackett, Katherine Kiefer, Natalia Smirnova, Frank Shinneman (via phone).

Minutes:

5:30 p.m. – call to order.

1. Approval of the minutes of February 23, 2015 meeting.

Minutes of February 23, 2015 were approved unanimously as written.

2. “History of the Rail Trail” presentation by Chris Williams;

Chris Williams was sick with a flu, so this presentation was re-scheduled for next month.

3. Right of Way that would give access from Route 44 through Brook Street to the Rail Trail, and its impact on the multi-modal transportation in town.

Kitty Kiefer reported that the town will probably acquire the access from Route 44 through Brook Street to the Rail Trail. Even though this Committee is not focused on the connection from Route 44 to Rail Trail, we can still recommend to Selectmen to accept the responsibility for this connection because it will support the expansion of pedestrian network in Salisbury.

4. Report by Kitty Kiefer and Pat Hackett on the results of the request for \$2,500 for feasibility study at the March 2 Selectmen meeting.

- Kitty Kiefer reported that on March 2, 2015 Selectmen meeting, Pathways Committee’s request for \$2,500 for a feasibility study for our first priority sidewalk part (Meadow Street – New Firehouse) was approved.
- Pat Hackett presented the new Estimate of Professional Services for the feasibility study for the sidewalk from Meadow Street to the New Firehouse. The estimate from Allied Engineering Association LLC (AEA) is attached. The estimate is for the total of \$12,000, with the design development/base preparation phase total of \$6,500. Discussion followed

ensuring that we do not over-pay AEA, use our allocated budget frugally, and get the project of a feasibility study moving forward.

Resolution: Salisbury Pathways Committee approved up to a maximum of \$2,500 to pay to Allied Engineering Association LLC for the services identified in their Estimate of Professional Services as Section 1, items 1, 2, and 2. In particular, those services are:

- “1. D.O.T. Mapping/Property Line Research;
2. Field Survey (topographic, utilities, etc.)
2. Base Map Preparation.”

Pat Hackett is to negotiate this scope of work and payment with AEA. Pat Hackett is authorized to order this work if he is successful staying within or under the budget of \$2,500.

5. Citizens Comments

No citizens present.

6. New business

Preliminary Agenda for April 20 meeting:

1. Approval of the minutes of the March 16 meeting.
2. “History of the Rail Trail” presentation by Chris Williams;
3. Report by Pat Hackett about the results of negotiation with AEA for services identified in their Estimate of Professional Services as Section 1, items 1, 2, and 2;
4. Report by Chris Williams about the DOT pavement schedule for Route 44 and 41, and other initiatives to increase pedestrian safety and implement traffic calming;
5. Citizens Comments;
6. New Business

Meeting adjourned at 6:00 p.m.

Minutes respectfully submitted by Natalia V. Smirnova, Secretary, on March 17, 2015.

Minutes approved unanimously as written on April 20, 2015.

Natalia Smirnova

From: Robert Gilchrest <aea.bobg@gmail.com>
Sent: Monday, December 01, 2014 12:01 PM
To: Natalia Smirnova
Cc: George Johannesen
Subject: RE: Quote for a Feasibility Study

Natalia- Hope you had a great Holiday...as requested please find below the information you were looking for:

Salisbury Pathways Project

Meadow Street to Brook Street (New Firehouse)

Feasibility Study/Schematic Design

Estimated Fee: \$2,500 (3.7% of Project Cost)

Services to include the following:

1. Mapping Research (1/2 day)
2. Preliminary Base Map (1 day)
3. Site Visit (1/2 day)
4. Preliminary Layout (1/2 day)
5. Potential Cost based on Schematic Design (1/4 day)
6. Present to committee (1/4 day)

Potential Pre-design Estimate (based on 800 LF 5' walk):

Walk excavation:	\$1,500
Earthwork/Grading:	\$2,000
Existing driveway removal:	\$1,500
New walkway base:	\$5,000
New 5' concrete walk:	\$13,500
Pedestrian bridge over drainage swale:	\$35,000
Traffic control:	\$6,500
<u>Seeding/landscaping:</u>	<u>\$2,000</u>
TOTAL:	\$67,000*

*does not include contingency, design fees, surveying, permitting, taxes, and contractor's overhead and profit

Bob

Robert M. Gilchrest, Project Manager
Allied Engineering Associates, LLC
95 Main Street, 3rd Floor
P.O. Box 726



Allied Engineering Assoc LLC

95 Main Street 3rd Floor – East

P.O. Box 726

North Canaan, CT 06018

860-824-1400

860-824-1401 fax

allied-engineering@snet.net

Salisbury Pathways Project Estimate of Professional Services

Meadow Street to Brook Street (New Firehouse)

1. Design Development/Base Preparation Phase

Estimated Fee: **\$6,500**

Services to include the following:

1. D.O.T. Mapping/Property Line Research
2. Field Survey (topographic, utilities, etc.)
2. Base Map Preparation
3. Site Visit(s)
4. Preliminary Layout/Design
5. Preparation of Cost Estimate based on Preliminary Design
6. Presentation to Pathway Committee for review/comment.

2. Approval/Permit Phase

Estimated Fee: **\$1,000**

Services to include the following:

1. Presentation of approved design (by Pathway Committee) to Town of Salisbury for support and funding, if required.
2. Submit to State and local agencies for permitting (CTDOT, Planning & Zoning, and Conservation Commission).
3. Meetings associated with Approval Process.

3. Construction Documentation/Bid Phase

Estimated Fee: **\$4,500**

Services to include the following:

1. Based on approved permit drawings generate construction drawings and specifications for bidding purposes.
2. Assist Town with the bidding process (contractor list, bid review, etc.).

Total Estimated Engineering Fees: \$12,000

Salisbury Pathways Committee

Eighth Meeting

Date and Time: Monday, for April 20, 2015.

Location: Salisbury Town Hall, Upstairs Meeting Room, second floor.

Present: Pat Hackett, Katherine Kiefer, Natalia Smirnova, Frank Shinneman, Chris Williams, Curtis Rand, Carol Williams, Tessie Connell.

Minutes:

5:32 p.m. – call to order.

1. Approval of the Minutes of the March 16 meeting.

Minutes approved as written unanimously.

2. “History of the Rail Trail” presentation by Chris Williams.

Chris Williams described the history of the Rail Road since 1867 and the Rail Trail land acquisition by the Town in 1968. Special meeting to acquire the land was attended and voted by more than 300 people. Attached are the minutes of Town of Salisbury Town Meeting in August 1968 and October 1968, as well as the deed from Penn Central Company for the sale of the land for \$22,000.00 in 1968.

Chris Williams described that the from 1869 till 1965 the rail road provided economic development of this area and created opportunities for vacation destinations for New York City residents. Attached are pictures of the train stations and rail road portions that went through our area.

Source: “The Central New England Railroad, 1867-1967.” 1972, The Salisbury Association, Salisbury, CT.

3. Report by Pat Hackett about the results of negotiation with AEA for the services identified in their Estimate of Professional Services as Section 1, items 1, 2, and 2.

Pat Hackett presented the Allied Engineering Associates (AEA) Professional Services Agreement to perform D.O.T. Mapping/Property Line Research for the fee of \$2,500. This sum was approved at the Selectmen meeting in February. The AEA Professional Services Agreement is attached. At the meeting, this agreement was signed by Frank Shinneman, President of the Pathways Committee, and by Curtis Rand, First Selectman.

After the execution of the Agreement, Carol Williams volunteered to deliver it to AEA for the execution on their part. After that is done, the work should commence within two weeks. The executed by both parties Agreement is to be brought back to the Committee and to be filed at the Town Hall. Curtis is to cut a \$1,000 deposit check to AEA by Friday, April 24.

4. Report by Chris Williams about the DOT pavement schedule for Route 44 and 41, and other initiatives to increase pedestrian safety and implement traffic calming.

Chris Williams reported that DOT does not plan the paving of the Rt. 44 or Rt. 41 in Salisbury in the near future. Therefore, Chris proposed to latch on to other organizations that could possibly help to move this project forward. One idea is to go to the Council of Governments (COG) meeting in Torrington on May 14 and research if we can ask them for money or if we can latch on to their similar projects and expand the work into Salisbury. Kitty Kiefer volunteered to attend this meeting.

5. Citizens Comments.

Curtis Rand described the time line for the budget approval process for the Town. He said that if the Committee needs to ask for money for future work on the pathways, the request to Selectmen should come by Christmas time of any given year to be included in the following year budget.

Curtis said that STEAP grants are for \$500,000 per locality, and Salisbury and Sharon applied this year for the Transfer Station Project. If this project gets funded – Pathways should wait till next year to apply. If Transfer Station does not get funded, Pathways Committee can apply this year by October.

6. New Business.

Preliminary Agenda for May 18 Meeting:

- 1) Report on the AEA Agreement execution and the progress of the work on the D.O.T. Mapping/Property Line Research;
- 2) Report on the COG meeting.

Meeting adjourns at 6:27 p.m.

Minutes respectfully submitted by Natalia V. Smirnova, Secretary, on April 24, 2015.

Minutes approved unanimously as written on May 18, 2015

TO ALL PEOPLE TO WHOM THESE PRESENTS SHALL COME, GREETING:

PENN CENTRAL COMPANY, of Six Penn Center Plaza, Philadelphia, Pennsylvania, with an office in New Haven, Connecticut, a corporation organized and existing under the laws of the Commonwealth of Pennsylvania, for the consideration of Twenty-Two Thousand Dollars (\$22,000.00), received to its full satisfaction of the TOWN OF SALISBURY, a municipal corporation located in the County of Litchfield and State of Connecticut, DOES HEREBY REMISE, RELEASE AND QUITCLAIM unto said Town of Salisbury, its successors and assigns forever, _____

all the right, title, interest, claim and demand whatsoever as the said Releasor has or ought to have in and to all that certain portion of land situate, lying and being in said Town of Salisbury, County of Litchfield and State of Connecticut, consisting of all the remaining right of way of the former Connecticut Western Railroad Company now owned by said Releasor varying in width and extending from the southeasterly side of the Salisbury-Canaan Road which intersects station 3271 + 35 more or less of the monumented center line of the railroad formerly leading from Hartford, Connecticut, to New York State Line in a general southwesterly direction to the northeasterly side of a highway which intersects station 3381 + 85 more or less of said monumented center line.

Containing 20 acres more or less.

Being the same premises acquired by Connecticut Western Railroad Company under the following deeds:

Warranty deed from Albert Moore and Silas B. Moore dated December 14, 1869 and recorded in Salisbury Land Records in Book 30 at Page 294, and being the first parcel therein.

Warranty deed from George Blodget dated December 22, 1870 and recorded in Salisbury Land Records in Book 30 at Page 427.

Warranty deed from Elizabeth O. Chittenden dated December 14, 1869 and recorded in Salisbury Land Records in Book 30 at Page 295.

Warranty deed from Frederick Bushnell dated December 14, 1869 and recorded in Salisbury Land Records in Book 30 at Page 304.

- Limited quitclaim deed from George W. Cowdrey dated January 2, 1878 and recorded in Salisbury Land Records in Book 36 at Page 109.
- Warranty deed from Thomas A. Stiles dated December 20, 1869 and recorded in Salisbury Land Records in Book 30 at Page 320.
- Warranty deed from George Coffing dated December 13, 1869 and recorded in Salisbury Land Records in Book 30 at Page 303.
- Warranty deed from John P. Walton dated December 13, 1869 and recorded in Salisbury Land Records in Book 30 at Page 301.
- Warranty deed from Barnum Richardson Company et al., dated September 19, 1873 and recorded in Salisbury Land Records in Book 34 at Page 23.
- Warranty deed from Robert Bostwick dated December 10, 1869 and recorded in Salisbury Land Records in Book 30 at Page 293.
- Quitclaim deed from Seth Walton dated December 13, 1869 and recorded in Salisbury Land Records in Book 31 at Page 39.
- Warranty deed from William J. Pettus dated December 13, 1869 and recorded in Salisbury Land Records in Book 30 at Page 296.
- Warranty deed from Frederick Holley dated December 13, 1869 and recorded in Salisbury Land Records in Book 30 at Page 297.
- Warranty deed from Henry A. Beers dated December 13, 1869 and recorded in Salisbury Land Records in Book 30 at Page 299.
- Quitclaim deed from Robert Bostwick dated December 13, 1869 and recorded in Salisbury Land Records in Book 31 at Page 40.
- Warranty deed from Andrew J. Miller dated October 27, 1871 and recorded in Salisbury Land Records in Book 30 at Page 501.
- Quitclaim deed from George H. Jackson et al., dated January 5, 1880 and recorded in Salisbury Land Records in Book 31 at Page 537.
- Warranty deed from George W. Peet dated August 1, 1872 and recorded in Salisbury Land Records in Book 30 at Page 594.
- Warranty deed from Charles E. Bostwick dated May 20, 1870 and recorded in Salisbury Land Records in Book 30 at Page 388.
- Warranty deed from Lorenzo Tupper and George Wood dated December 13, 1869 and recorded in Salisbury Land Records in Book 30 at Page 298.
- Warranty deed from Alexander H. Holley to Frederick Watson, Trustee, dated July 19, 1870 and recorded in Salisbury Land Records in Book 30 at Page 383, which deed reserved to Connecticut Western Railroad Company its right of way.

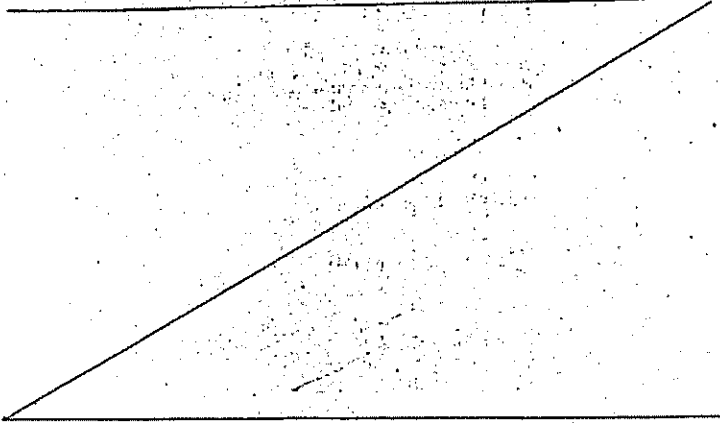
- 3 -

Quitclaim deed from D. P. Nichols, Trustee, dated July 30, 1881 and recorded with Secretary of State in Mortgage Book 2 at Page 285, being Parcel 8 in Salisbury in said deed in so far as said Parcel 8 applies within the above described limits of the herein conveyed premises.

Excepting and excluding from the above described premises that which was conveyed by The New York, New Haven and Hartford Railroad Company to others under the following deeds:

Quitclaim deed to Lena Clark Goodwin dated January 9, 1935.
Quitclaim deed to Olaf Satre dated February 13, 1939.
Quitclaim deed to Earl E. Morey dated June 27, 1939.
Quitclaim deed to Eloise H. Davison dated December 14, 1943.
Quitclaim deed to Austin G. Lovett dated May 26, 1949.
Quitclaim deed to Sidney O. Cowles dated June 30, 1949.
Quitclaim deed to Viva E. Gordon dated February 13, 1952.
Quitclaim deed to Sidney O. Cowles dated August 26, 1957.
Quitclaim deed to Community Service, Inc., dated September 13, 1934.
Quitclaim deed to Town of Salisbury dated January 23, 1951 (Parcel 1 therein).

The premises are hereby conveyed subject to (1) existing drainage conditions; (2) any state of facts which an accurate survey or inspection of the premises may disclose; and (3) any rights of record.



TO HAVE AND TO HOLD the premises, with all the appurtenances, unto the said Releasee, its successors and assigns forever, so that neither the Releasor nor its successors nor any other person under it or them shall hereafter have any claim, right or title in or to the premises or any part thereof, but therefrom it is and they are by these presents forever barred and excluded.

IN WITNESS WHEREOF, Penn Central Company has caused this instrument to be executed by F. J. Gasparini, its Assistant Vice President-Real Estate, hereto duly authorized, and its corporate seal to be hereunto affixed this 18TH day of AUGUST, 1969.

PENN CENTRAL COMPANY

By [Signature]
Assistant Vice President-Real Estate

F. J. GASPARINI

Attest:
[Signature]
Assistant Secretary
W. A. HARRING

Approved as to form:

[Signature]

Description approved:

[Signature]

Signed, sealed and delivered in the presence of:

[Signature]
E. J. LAWSER
[Signature]
E. D. CONNER

STATE OF PENNSYLVANIA) Philadelphia
COUNTY OF PHILADELPHIA) ss. NEWINGTON, August 19, 1969

Personally appeared F. J. Gasparini, Assistant Vice President-Real Estate of Penn Central Company, signer and sealer of the foregoing instrument, and acknowledged the same to be his free act and deed, and the free act and deed of said Company, before me.

[Signature]
Notary Public

WILLIAM J. O'NEIL

My commission expires [Date]
Notary Public, Philadelphia, Philadelphia Co.
My Commission Expires June 25, 1972

Received for Record Sept. 9, 1969 at 4:10 P. M.

[Signature]
Town Clerk

SPECIAL TOWN MEETING
JUNE 20, 1968

A special town meeting legally warned and called was held in the town hall on Thursday, June 20, 1968 at 8 p.m. The meeting was called to order by the town clerk and Harry F. Bellini was appointed Moderator. The clerk read the call for the meeting.

The following Resolution in seven parts was approved and passed by a hand vote - Yes-188 No-103:

RESOLVED-

(a) To acquire all of the railroad property of The New York, New Haven and Hartford Railroad Company in the Town of Salisbury (so much of the right of way of the former Canaan to Lakeville Branch lying between center line station 2900 + 00 at Canaan and center line station 3381 + 89 at Salisbury as lies within the Town of Salisbury);

(b) To ratify the act of the Board of Selectmen in notifying the Public Utilities Commission and the Railroad Company on June 4, 1968 of Salisbury's desire to acquire such land pursuant to Public Act 577;

(c) To authorize and empower the First Selectman to negotiate a purchase price for such land with the Railroad Company, as provided by such Act, and to appropriate a sum thereto not exceeding \$45,000.00, as recommended by the Board of Finance;

(d) If the amount to be paid therefor can not be agreed upon by the parties, to proceed to acquire the land in accordance with the procedure described in section 48-12 of the 1965 supplement to the general statutes;

(e) To authorize and empower the First Selectman, on behalf of the Town, outside of the provisions of Public Act 577, to make an offer of \$45,000.00 for all of said land and to appropriate said sum of \$45,000.00 for such purposes as recommended by the Board of Finance;

(f) It being the will of this meeting to acquire all of said land for the Town of Salisbury, to authorize and empower the Board of Selectmen to do all things, to execute and deliver all documents, and to take all steps necessary and/or convenient for carrying out the purposes of this entire resolution;

(g) To authorize and empower the Board of Selectmen, in their discretion, to enter into such easements and licenses revocable or otherwise as they may deem in the interest of the Town and of the abutting property owners.

An amendment to the Resolution was defeated - No-184 - Yes-99. An amendment to the amendment was also defeated -

Other business proper to come before the meeting was a Resolution presented by First Selectman William B. Barnettt , and it was unanimously passed:

Be it Resolved, that Salisbury citizens in Town Meeting assembled accept the generous gift of \$5000 from John D. Briscoe to help purchase the railroad right of way and hereby express their appreciation of his recognition

of the need for this kind of open space to be owned by the town for all its people and accept his gift with sincere thanks."

Preceding the voting on the original Resolution the following letter was read by the Moderator:

June 20, 1968

The Moderator
Town Hall
Salisbury, Conn.

Dear Sir:

In accordance with State Statutes which require a recommendation from the Planning and Zoning Commission at such times as the Town wishes to consider a capital expenditure. The Salisbury Planning and Zoning Commission makes the following recommendation at this time:

- (1) the Commission recommends the purchase of the whole of the right of way of the New York, New Haven and Hartford Railroad from the Housatonic River to the terminus in Lakeville;
- (2) the Commission recommends the retention by the Town of the right of way between Route 44, Salisbury, and the terminus in Lakeville;
- (3) the Commission recommends that the remaining part of the right of way should be disposed of in accordance with the wishes of the Town.

For the Commission

Gordon Reid
Chairman, Salisbury P & Z Comm.

The meeting was attended by over 300 persons seated in halls on both floors.

Meeting adjourned.

Attest: S. Silva
Town Clerk

STATE OF CONNECTICUT)
COUNTY OF LITCHFIELD)

ss. Salisbury June 21, 1968

Then and there I administered unto Roy Sherwood, appointed special constable, the oath of office required by law.

Attest: S. Silva
Town Clerk

STATE OF CONNECTICUT)
COUNTY OF LITCHFIELD)

ss. Salisbury July 1, 1968

Then and there I administered unto Frank Verano, David C. Prazee, and Marchello Lorenzo, appointed special constables, the oath of office required by law.

Attest: S. Silva
Town Clerk

RETURN OF NOTICE

I HEREBY CERTIFY that on August 14th, 1968 I left a duplicate of the foregoing and attached warning and notice of special meeting of the Town of Salisbury with Lila S. Nash, its Town Clerk.

I FURTHER CERTIFY that I caused a copy of said warning and notice to be published in the Lakeville Journal, a newspaper having a circulation in said town on August 14th, 1968.

I FURTHER CERTIFY that on August 14th, 1968 I set upon the signpost or other exterior place permitted by Section 7-3 of the General Statutes of Connecticut, and at all other places designated by the Town, a written copy of said warning and notice signed by the Board of Selectmen or a majority of them.

I FURTHER CERTIFY that all of the above acts were done by me at least five days before the holding of said meeting on August 23, 1968.

Dated at Salisbury, Connecticut, this 14th day of August, 1968.

William D. Barnett
First Selectman

STATE OF CONNECTICUT)
COUNTY OF LITCHFIELD) SS. Salisbury, August 16, 1968

Then and there I administered unto Robert Livsey appointed a special constable, the oath of office required by law.

Attest

Lila S. Nash
TOWN CLERK

TOWN OF SALISBURY
SPECIAL TOWN MEETING

AUGUST 23, 1968

A Special Town Meeting duly warned and called was held in the town hall on Friday, August 23, 1968 at 8 p.m. S. Norton Miner was appointed Moderator, and the call was read by the Clerk. About 285 electors were present.

The following Resolutions were adopted:

(A) RESOLVED, That the Town appropriate to Budget Item No. 228, Holley Block Project, as recommended by the Board of Finance, the \$6,000, accepted as a gift toward said project at the Special Town Meeting on July 18, 1968.

(B) RESOLVED, That the Town rescind all action taken at the Special Town Meeting held on Thursday, June 20, 1968, relative to the railroad property of The New York, New Haven and Hartford Railroad Company, in the Town of Salisbury.

The following Ordinance was adopted by an overwhelming majority:

ORDINANCE CREATING A SEWER AUTHORITY

(C) BE IT ORDAINED That

1. The Town of Salisbury hereby creates a Sewer Commission and designates said commission as the Sewer Authority of the Town of Salisbury, with all of the powers, purposes and objectives set forth in Chapter 103 of the General Statutes of Connecticut, Revision of 1958, and amendments thereto. The function of said Commission is to establish, operate and manage all present and future public sewage collection and disposal systems within the Town of Salisbury and any additions thereto, substantially in accordance with the recommendations contained in the report of the Sewerage Planning Committee, Town of Salisbury, dated March 30, 1968.

2. Said Commission shall consist of five electors of the Town of Salisbury who shall be appointed by the Board of Selectmen and serve without compensation. The said five members shall serve for terms of five years, except that the members of the Commission first appointed shall be appointed for such terms that the term of one member shall expire at the end of each year for the next five years. Terms shall expire on June 30 in each year. Whenever a vacancy occurs, the Selectmen shall appoint a successor to hold office for the unexpired portion of the term. A Commissioner shall continue in office until his successor is appointed.

3. The Commission shall elect a chairman from among its own members at the first meeting and annually thereafter at the first meeting held after the first day of July in each year. The Commission shall appoint a Clerk who need not be a member of the Commission, an attorney and such other employees as it may deem necessary and shall prescribe and define their duties. The Clerk shall keep a complete record of the proceedings of the Commission and, when ordered by the Commission, shall file the same with the Town Clerk. All such records shall be open for public inspection at reasonable hours. The Clerk of the Commission shall file with the Town Clerk a schedule of all regular meetings of the Commission in accordance with Public Act No. 723 (1967). Special meetings of the Commission may be called by the Chairman or any two members upon twenty-four hours' notice thereof, subject to the provisions of said Public Act No. 723.

4. The Commission shall maintain proper accounting and financial records and shall make an annual report to the Selectmen. The Commission shall prepare annually a budget of estimated revenues and expenditures for the ensuing fiscal year.

5. A Commissioner may be removed for inefficiency or neglect of duty or misconduct in office by the Board of Selectmen after a hearing conforming to recognized standards of due process of law; a Commissioner shall be removed only after opportunity to be heard in person or by counsel before the Board of Selectmen at least ten days prior to which he shall have been given a copy of the charges against him. In the event of the removal of any Commissioner, a record of the proceedings together with the charges and findings thereon, shall be filed in the Office of the Clerk of the Town of Salisbury.

6. This Ordinance shall become effective fifteen days after publication hereof in a newspaper having a circulation in the Town of Salisbury.

(D) After considering the recommendation of the Board of Finance that an appropriation of \$1,500,000 be made for sewer construction, and the issue of bonds in the sum of \$1,500,000 to defray such appropriation, Mr. Wagner presented the following resolution, which was adopted by a unanimous vote:

RESOLVED, That the reports of the Board of Finance be accepted and copies filed with the records of this meeting.

(E) Mr. Wagner presented the following resolution, which was adopted:

RESOLVED, That the sum of One Million Five Hundred Thousand Dollars (\$1,500,000) be appropriated for constructing a combined sewerage system for the Town of Salisbury substantially in accordance with recommendations contained in the report of the Sewerage Planning Committee, Town of Salisbury, dated March 30, 1968, and complying with Orders No. 87 and 633 of the Water Resources Commission of the State of Connecticut, and including architects' and engineers' fees, contingencies, and other incidental expenses.

(F) Mr. Wagner presented the following resolution, which was adopted by unanimous vote:

WHEREAS, It will be necessary to issue bonds in the sum of \$1,500,000 to defray the aforesaid appropriation,

NOW THEREFORE, RESOLVED, That the Town issue its sewer bonds under the provisions of Section 7-259 of the General Statutes of Connecticut, Revision of 1958, in the principal sum of One Million Five Hundred Thousand Dollars (\$1,500,000), in one or more series, or so much thereof as may be necessary to defray the aforesaid appropriation; the Treasurer shall keep a record of such bonds which shall be certified by The Salisbury Bank and Trust Company, Salisbury, Connecticut, and payable at Salisbury Bank and Trust Company or Hartford National Bank and Trust Company, Hartford, Connecticut, at such time or times, bear such date and rate of interest as shall be determined by the Board of Selectmen; such bonds shall be signed by the Selectmen, or a majority of them, and by the Treasurer of the Town of Salisbury, or bear a facsimile of any of such signatures, under the seal of the Town or have a facsimile of said seal printed thereon; Messrs. Day, Perry & Howard, of Hartford, Connecticut, are designated as the attorneys at law to render an opinion approving the legality of such issue; the proceeds of such bonds shall be used to defray the aforesaid appropriation for sewer construction; the Board of Selectmen is hereby authorized to determine the form of such bonds and, with the treasurer, to sell such bonds at public sale, to deliver the same on behalf of the Town and to do all other acts necessary and appropriate to complete such issue.

(G) Mr. Wagner presented the following resolution, which was adopted by unanimous vote:

RESOLVED, That the Town issue its temporary notes from time to time in an amount not exceeding One Million Five Hundred Thousand Dollars (\$1,500,000) under and pursuant to the provisions of Section 7-378 of the General Statutes of Connecticut, Revision of 1958, in anticipation of the receipt of proceeds from the sale of bonds authorized at this meeting, and the Selectmen, or a majority of them, and the Treasurer are hereby authorized to determine the amount, date, maturity,

interest rate, form and other details of such notes and to sell and deliver the same for the period permitted by said Section 7-378, subject to the terms and conditions of Public Act No. 626 of the 1967 Session of the General Assembly, which terms and conditions are hereby adopted.

(H) Mr. Wagner presented the following resolution, which was adopted:

RESOLVED, That the Sewer Authority is hereby authorized to expend the aforesaid appropriation of \$1,500,000 made at this meeting and to enter into contracts and agreements in the name of and on behalf of the Town of Salisbury for the above described sewer construction.

(I) Mr. Wagner presented the following resolution, which was adopted by unanimous vote:

RESOLVED, That the Sewer Authority is hereby authorized to apply for and accept a Federal grant under Public Law 84-660 and a State grant under Public Act No. 57 of the 1967 Session of General Assembly and is authorized to take any other action which may be considered necessary or desirable to enable the Town to construct the above described sewer construction, including the filing of such applications as may be required to enable the Town to obtain financial aid from the United States of America and the State of Connecticut in financing the cost of such construction.

(J) Mr. Wagner presented the following resolution, which was adopted by unanimous vote:

WHEREAS, it may be advisable to defray part of the aforesaid appropriation by the issue of sewer assessment notes instead of sewer bonds as aforesaid;

NOW, THEREFORE, RESOLVED, That the Town of Salisbury issue its sewer assessment notes, in one or more series, under authority of Section 7-269a of the General Statutes of Connecticut, Revision of 1958, as amended, and any other acts of the General Assembly of the State of Connecticut thereto enabling, from time to time in such amount not in excess of the amount of the costs of the aforesaid sewer project assessed or to be assessed against owners of property benefited thereby, provided that the principal amount of the general obligation bonds authorized at this meeting shall be reduced by the amount of such sewer assessment notes and by such amounts of grants received from the United States and the State of Connecticut as the Selectmen determine is available therefor; such notes shall be signed by the Selectmen, or a majority of them, and by the Treasurer of the Town of Salisbury, or bear a facsimile of any of such signatures, under the seal of the Town, or bear a facsimile of said seal; the Selectmen and the Treasurer are hereby authorized to determine the amount, date, rate of interest, maturities and form of such notes, to designate a bank or trust company to act as certifying and paying agent and the attorneys at law to render an opinion approving the legality of such notes, to sell and deliver such notes on behalf of the Town, to renew such notes from time to time as permitted in said Section 7-269a, as amended, and to do all other acts necessary or appropriate to complete such issue; such notes shall be secured by a pledge of benefit assessments against owners of property benefited thereby and by the full faith and credit of the town of Salisbury.

In the event that the receipts from sewer assessments are not sufficient to pay principal and interest upon such notes when due at the end of the period permitted by said Section 7-269a, as amended, or if for any reason the Selectmen and Treasurer consider it advisable to pay such notes prior to the end of such period, the Selectmen and Treasurer are authorized to issue notes and bonds of the Town under authority of Section 7-259 of the General Statutes of Connecticut, Revision of 1958, in an amount sufficient to pay any notes remaining unraid at maturity; the Treasurer shall keep a record of such notes and bonds which shall be certified by the Salisbury Bank and Trust Company, Salisbury, Connecticut, and payable at the Salisbury Bank and Trust Company or Hartford National Bank and Trust Company, Hartford, Connecticut, at such time or times, bear such date and rate of interest as shall be determined by the Board of Selectmen; such bonds shall be signed by the Selectmen, or a majority of them, and by the Treasurer of the Town of Salisbury, or bear a facsimile of any of such signatures, under the seal of the Town or have a facsimile of said seal printed thereon;

Messrs. Day, Perry & Howard, of Hartford, Connecticut, are designated as the attorneys at law to render an opinion approving the legality of such issue; the Board of Selectmen is hereby authorized to apply to the Tax Commissioner of the State of Connecticut for approval of such notes and bonds, to determine the form of such notes and bonds, and with the Treasurer, to sell such notes and bonds at public sale, to deliver the same on behalf of the Town and to do all other acts necessary and appropriate to complete such issue.

(K) It was voted to be the sense of the meeting that the Sewer Commission should be elected, rather than appointed by the Selectmen, at the earliest practicable time.

The Meeting adjourned.

Attest:

Sila Spach
Town Clerk

SEWER COMMISSION APPOINTMENT

State of Connecticut)
County of Litchfield) ss. Salisbury, September 3, 1968

The following electors are hereby appointed as members of the Salisbury Sewer Commission, with terms of office starting Sept. 20, 1968, and expiring as indicated:

Robert T. Pound - June 30, 1969

John H. Brooks, Jr. - June 30, 1971

Nelson E. Whitbeck June 30, 1970

Parent Ten Fyck - June 30, 1972

Gordon J. Card - June 30, 1973

Board of Selectmen:

William P. Barnett
John J. Seymour
John A. Wanda

STATE OF CONNECTICUT)
COUNTY OF LITCHFIELD)

ss. Town of Salisbury

The subscriber returns that on or before the 8th day of October, 1968, he caused to be published in The Lakeville Journal, a newspaper published and having a circulation in said Town, and he posted on each of the public signposts in said Town of Salisbury a copy of the warning for the Special Town Meeting to be held on Wednesday, October 16, 1968.

William F. Barnett

Subscribed and sworn to, before me,
this 8th day of October, 1968.

Theresa Stanton Seal
Notary Public

RESIGNATION

Lila S. Nash, Town Clerk
Town of Salisbury
Salisbury, Conn. 06068

Due to taking a full time position I hereby tender my resignation as Tax Collector of the Town of Salisbury to take effect as of December 15, 1968.

Edith W. MacNeil

SPECIAL TOWN MEETING

OCTOBER 16, 1968

A special town meeting duly warned and called was held in the town hall on Wednesday, October 16, 1968 at 6 p.m. William Ford was appointed as Moderator, and the call was read by the town clerk.

The following Resolutions were passed and approved:

- 1) RESOLVED, That the town appropriate \$22,000.00 to Budget Item No. 229, Purchase of Railroad Right of Way, extending westerly from Route #44, Salisbury, to the end of the line in Lakeville, as recommended by the Board of Finance.
- 2) RESOLVED, To accept, with gratitude, an anonymous gift of \$2,500.00 toward this purchase and to take the balance of \$19,500.00 from the General Fund Surplus Account.
- 3) RESOLVED, That the town authorize the Board of Selectmen to make a bid of \$22,000.00 for the purchase of the railroad right of way for the section extending westerly from Route #44, Salisbury, to the end of the line in Lakeville, and to authorize and empower the Board of Selectmen to do all things, to execute and deliver all documents, and to take all steps necessary and/or convenient for carrying out the purposes of this resolution.
- 4) RESOLVED, That the town appropriate the sum of \$12,000.00 to Budget Item No. 230, Building Dam and Repair Retaining Wall at Holley Factory Pond in Bauer Park, as recommended by the Board of Finance.

5) RESOLVED, That the proposed plans for building dam and repairing retaining wall provide parking facilities for not less than thirty automobiles in the area south of the Kouffel & Esser Plant, West of Holley Street, and North of Ethan Allen Street.

6) RESOLVED, That the town appropriate \$6,000.00 from undischursed Eauer Trust Fund to Budget Item No. 230, Building Dam and Repair Retaining Wall at Holley Factory Pond in Eauer Park, as a part of the foregoing appropriation of \$12,000.00, as recommended by the Board of Finance.

The meeting was attended by about 70 persons.

Meeting Adjourned

Attest Lila Auer
Town Clerk.

WARNING

STATE AND NATIONAL ELECTION

NOVEMBER 5, 1968

The Electors of the Town of Salisbury, Conn. are hereby warned and notified to meet at the Salisbury Town Hall, in said Town, on Tuesday, November 5, 1968 from 6 a.m. until 8 p.m. for the purpose of voting for Electors of President and Vice President, United States Senator, Representative in Congress from 6th District, State Senator from 30th District, State Representative from 173rd Assembly District, and Justices of the Peace and Registrars of Voters for the Town of Salisbury.

Dated at Salisbury, Connecticut, this 24th day of October, 1968.

Attest: Lila Auer
Town Clerk.

CHECKER'S CERTIFICATE

STATE ELECTION

NOVEMBER 5, 1968

STATE OF CONNECTICUT)
COUNTY OF LITCHFIELD)

ss. Salisbury, Conn. November 5, 1968

We hereby certify that the whole number of names on the Salisbury Voting List as perfected November 4, 1968 is 2388.

We further certify that the number checked as having voted is 2045 and the number not checked thereon is 343.

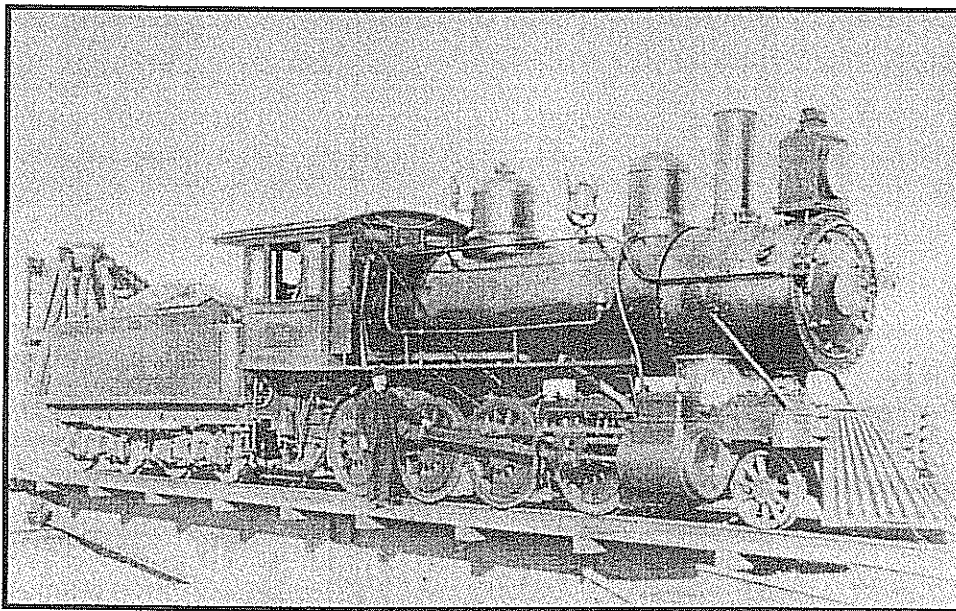
Attest: Mary Louise Kiefer R

Rosabel M. Genito D

Party Checkers

**THE
CENTRAL NEW ENGLAND
RAILROAD**

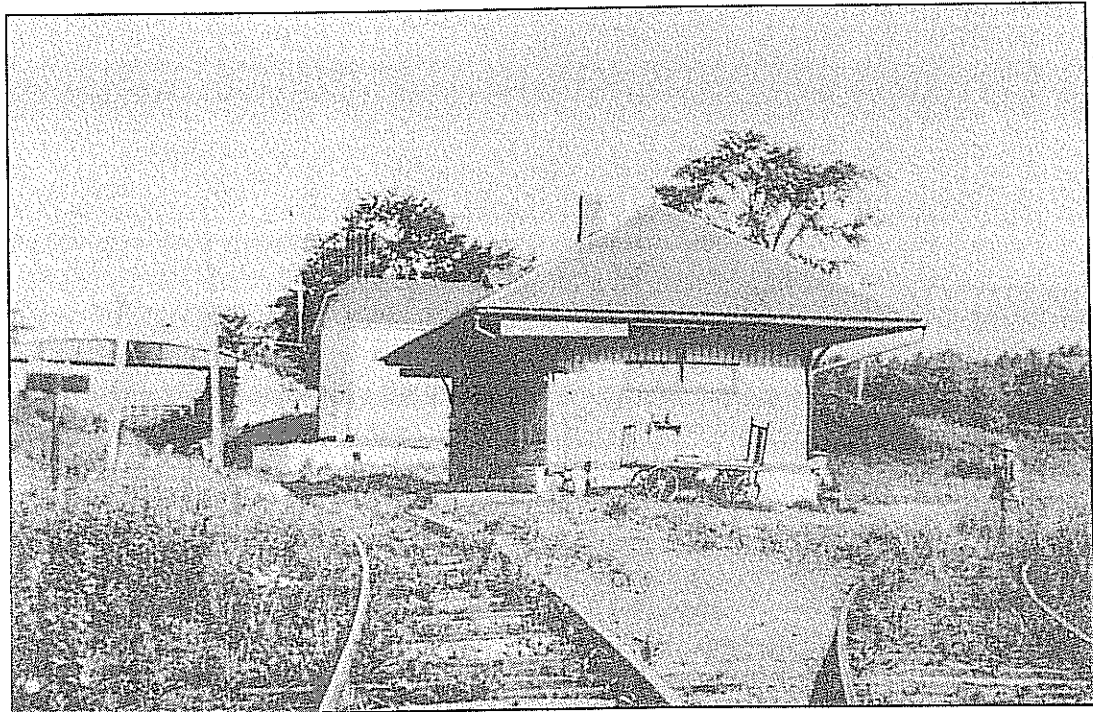
1867 — 1967



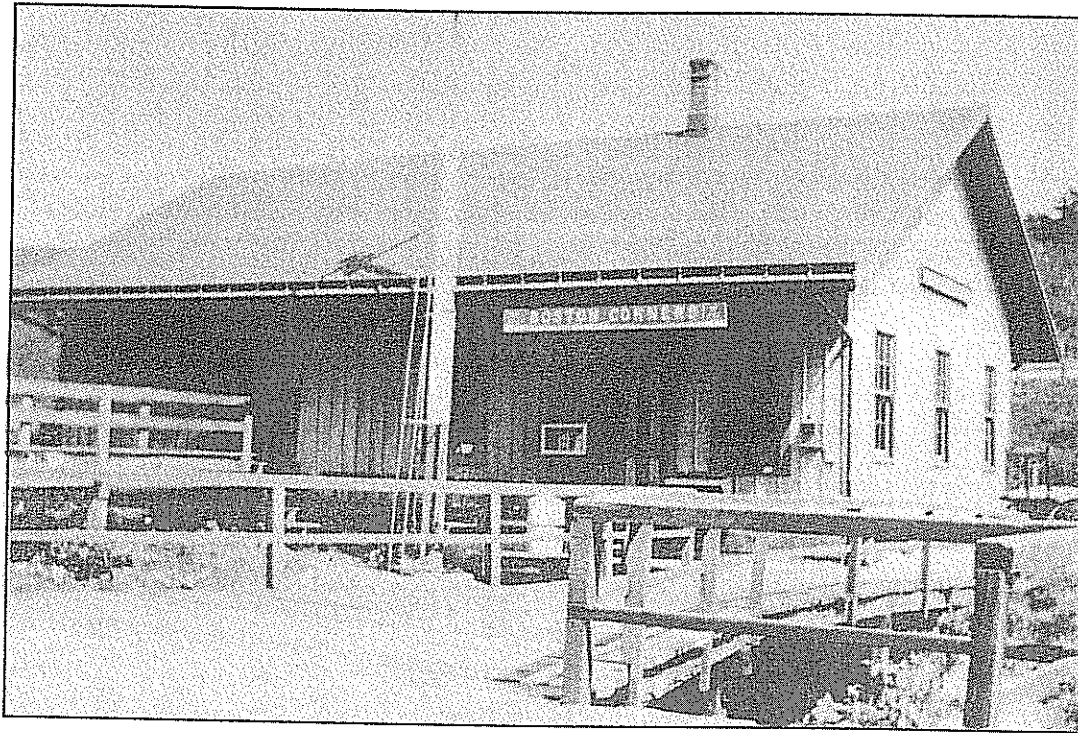
THE SALISBURY ASSOCIATION



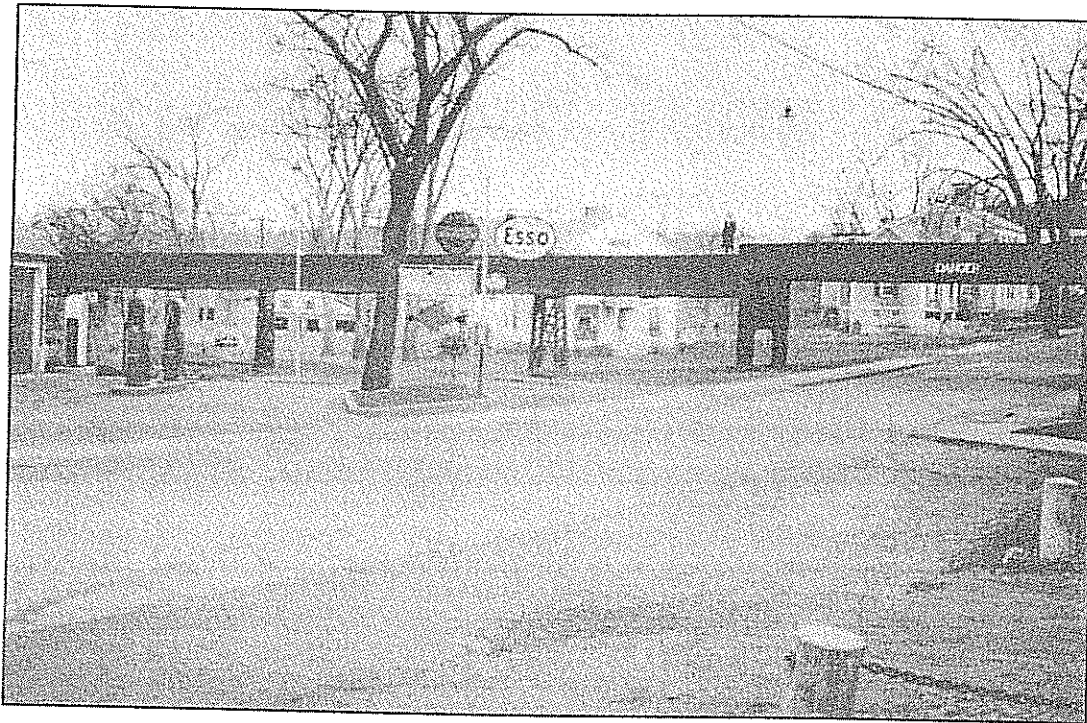
Salisbury station and water tower at Library Street.



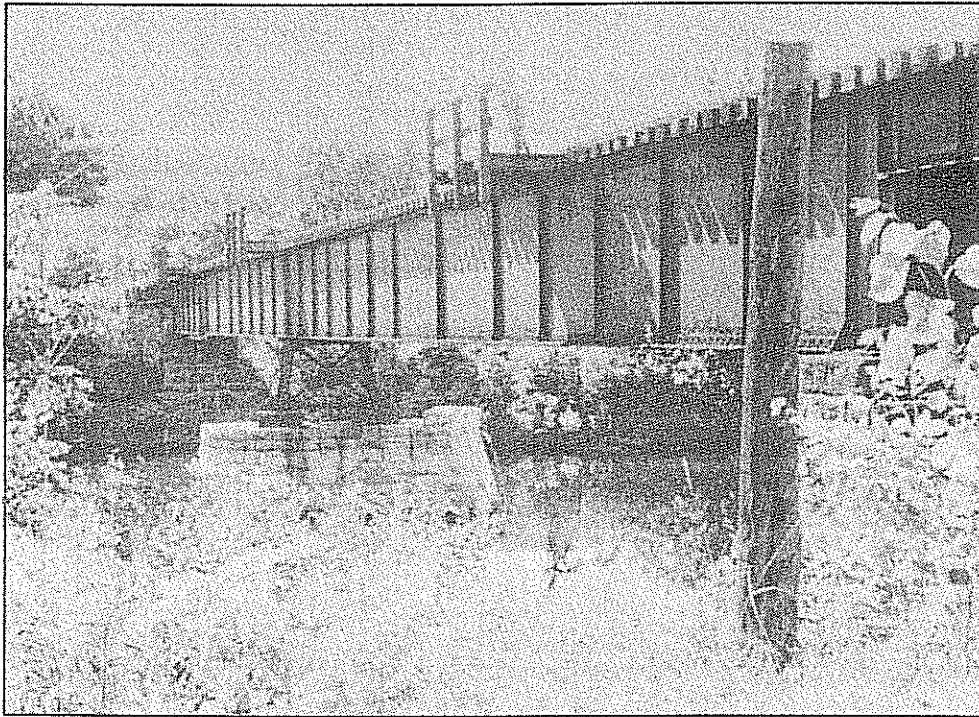
Taconic station and iron bridge, since rebuilt.



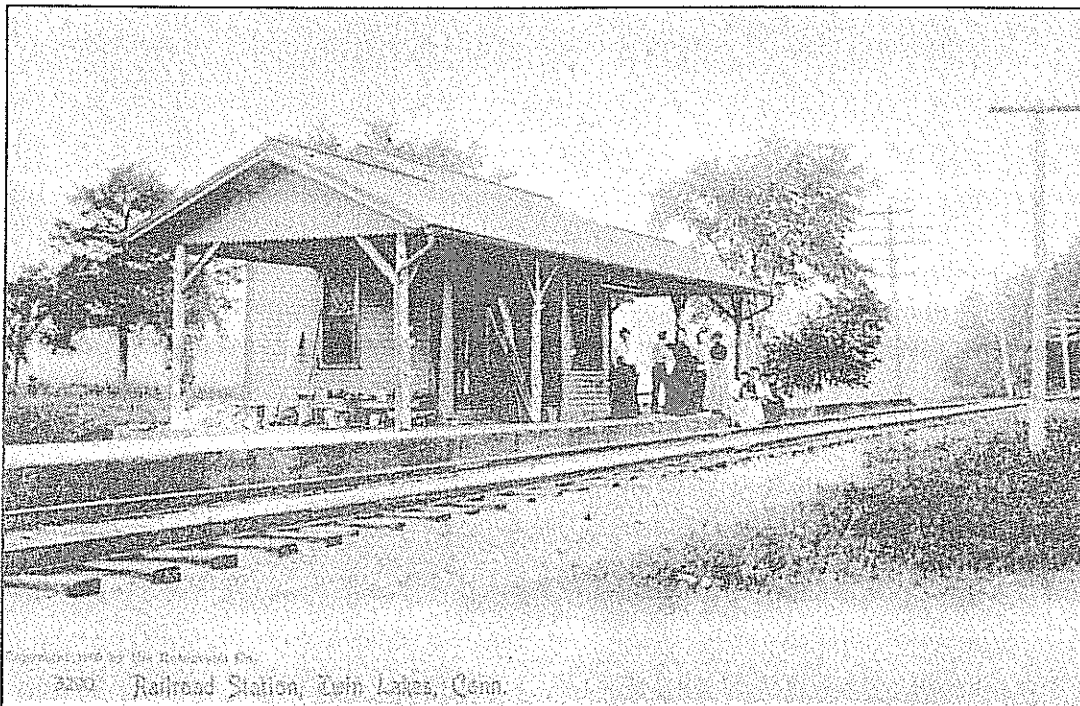
Boston Corners, N.Y. station. 1926



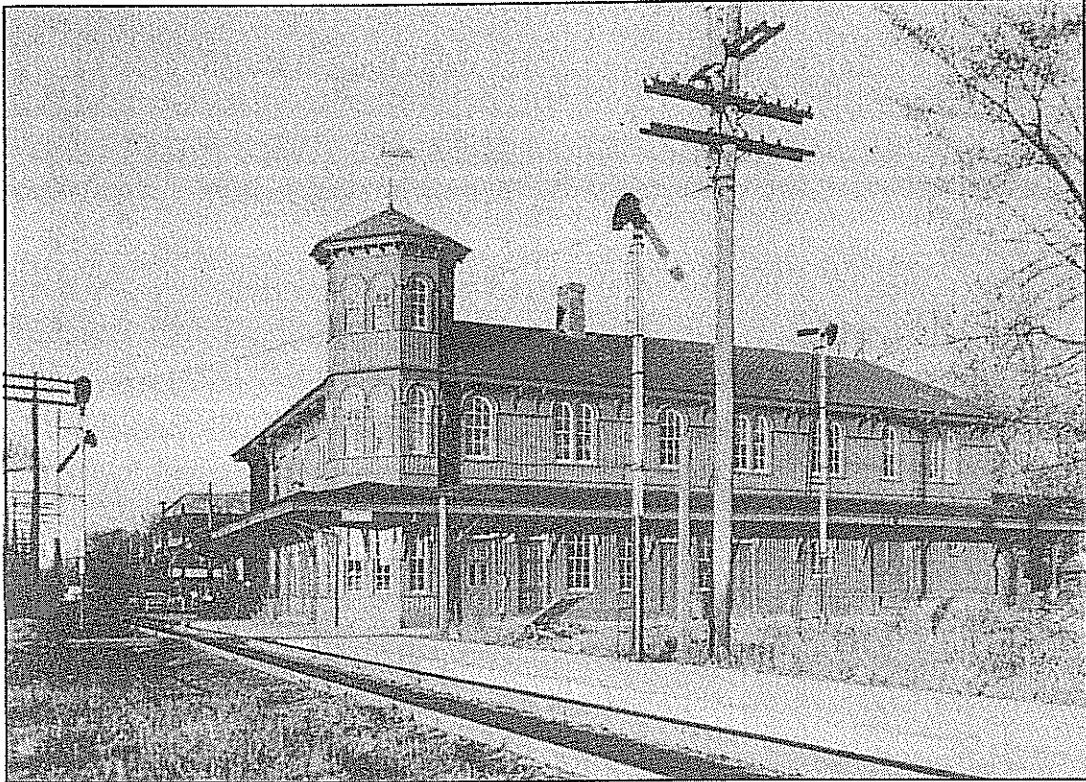
Former Lakeville Trestle over Route 41, April 1938



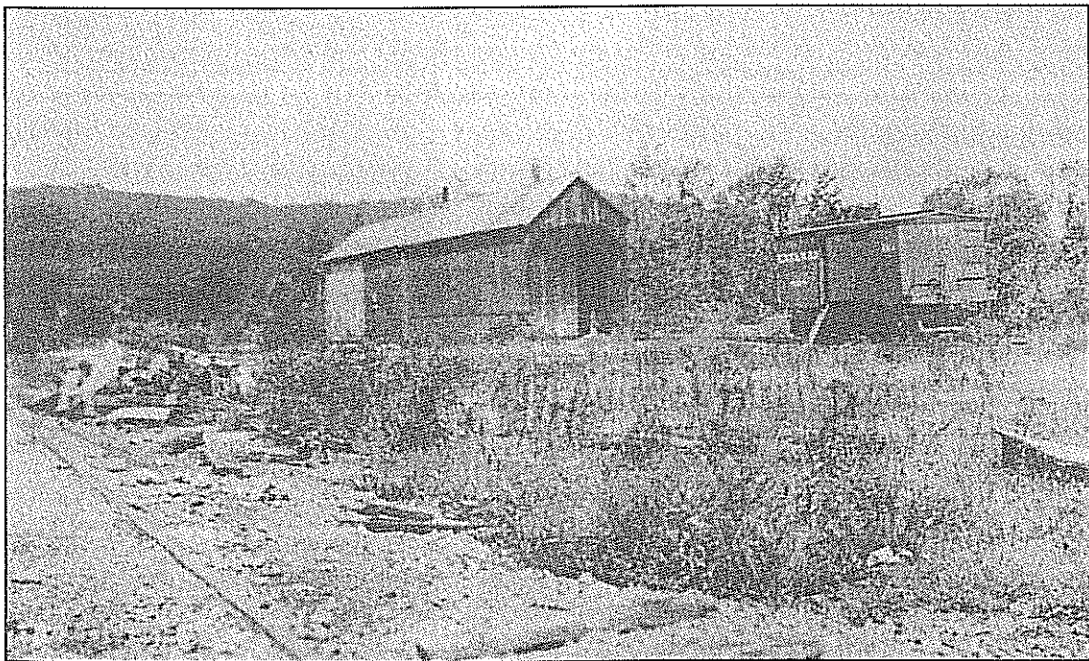
Bridge over the Housatonic River, west of Canaan.



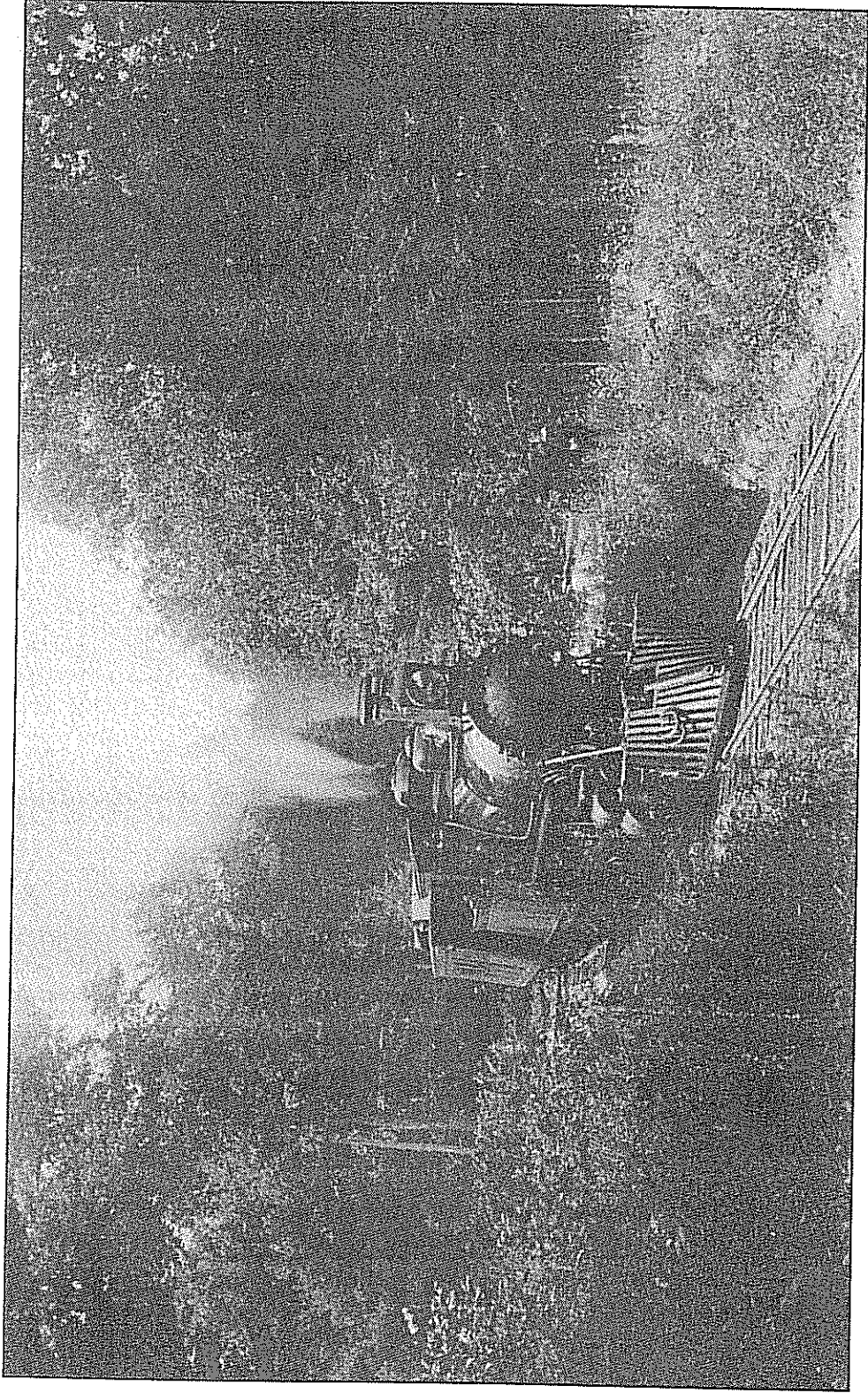
Railroad Station, Twin Lakes



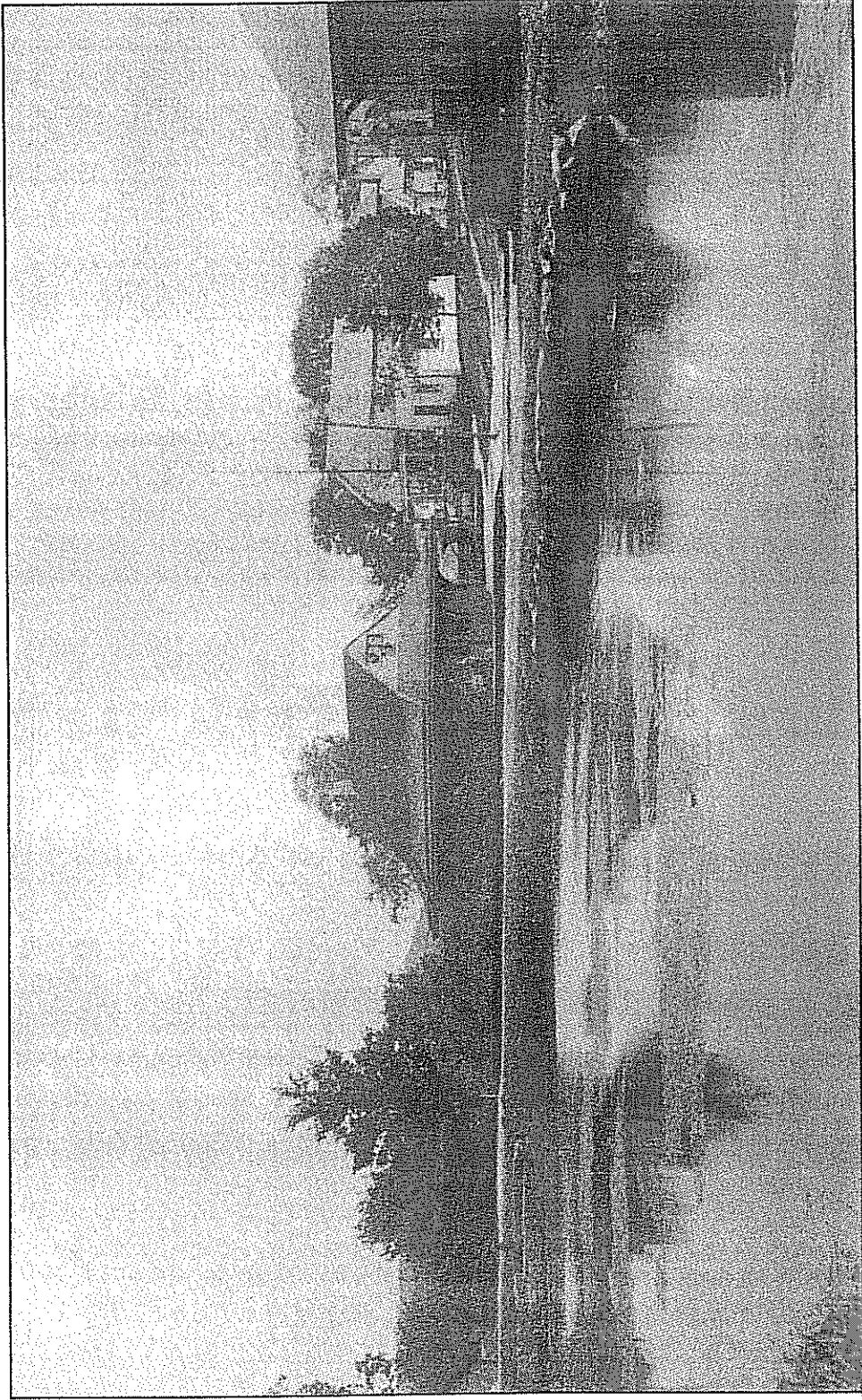
Canaan station at crossing with Berkshire branch of the N.Y.N.H. & Hartford R.R.



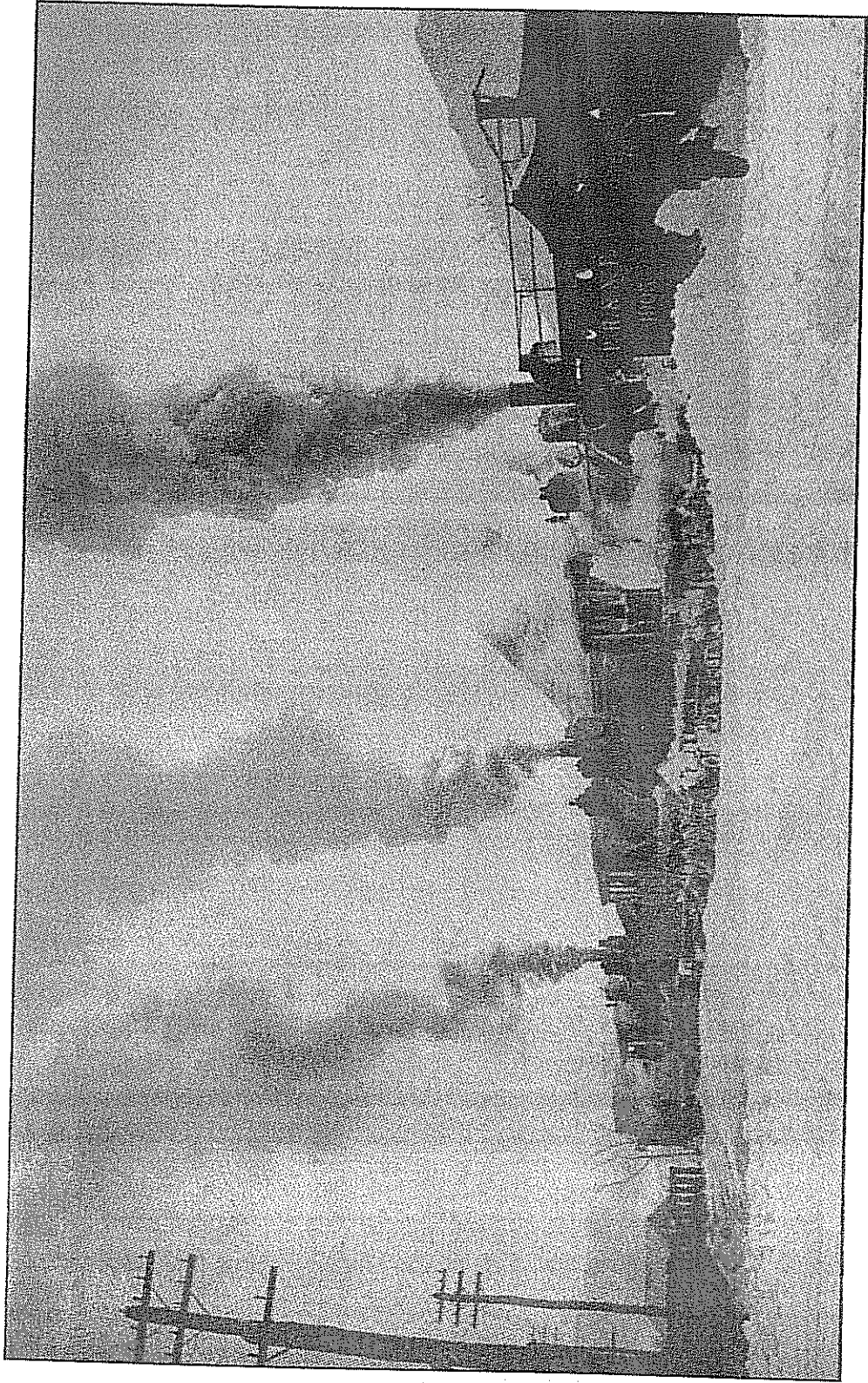
Old C.N.E. & W. single stall engine house at Canaan yards. Circa 1890.



East-bound train at Twin Lakes Picnic Grove. 1895.



Summer scene at Lakeville Station looking across Factory Pond. Circa 1900.



Engines at Lakeville Station in snowstorm. Feb. 14, 1899.



CONN. WESTERN RAILROAD TIME TABLE.

Commencing Thursday, Dec. 21st, 1871.

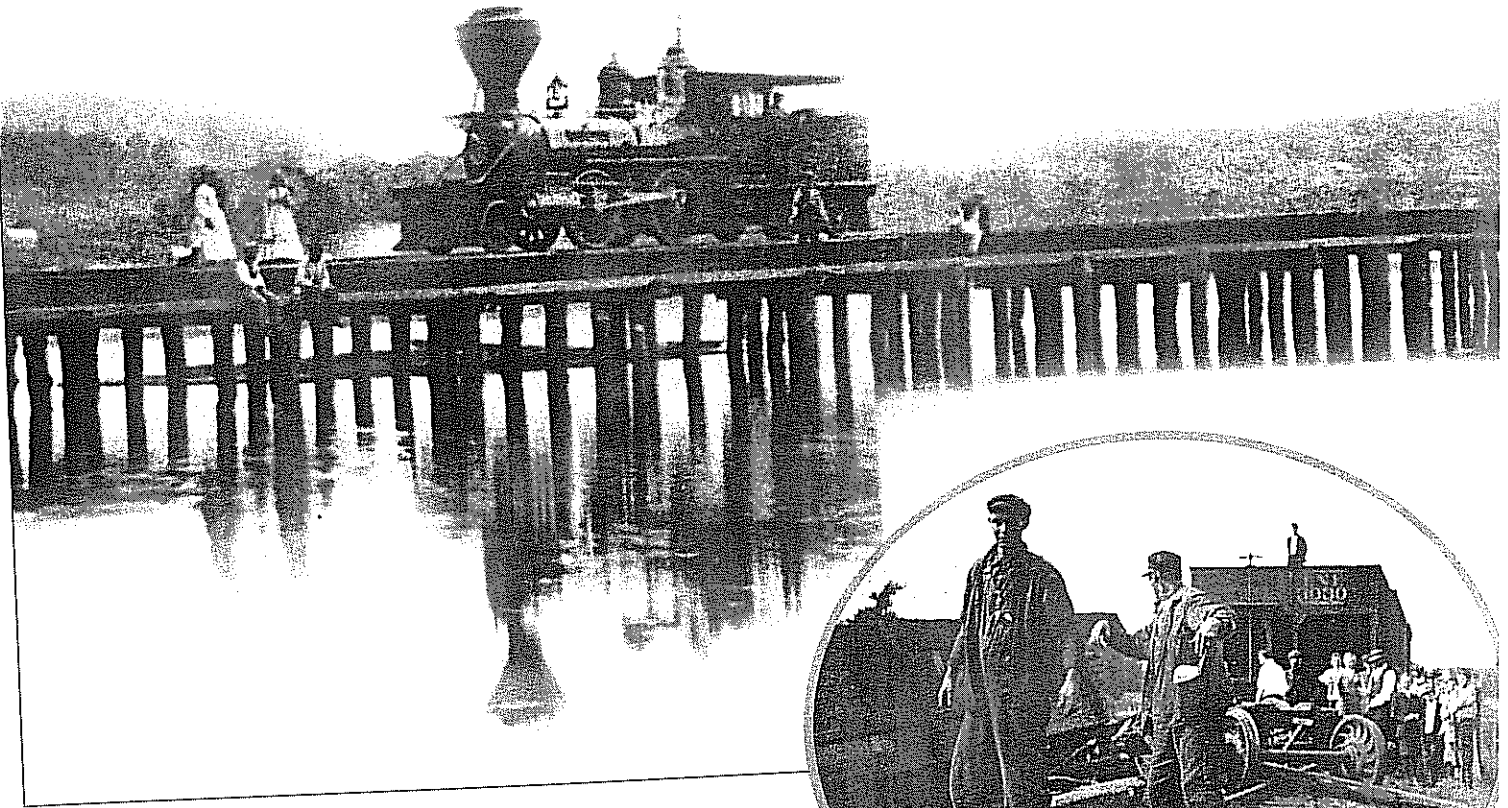
GOING WEST.

GOING EAST.

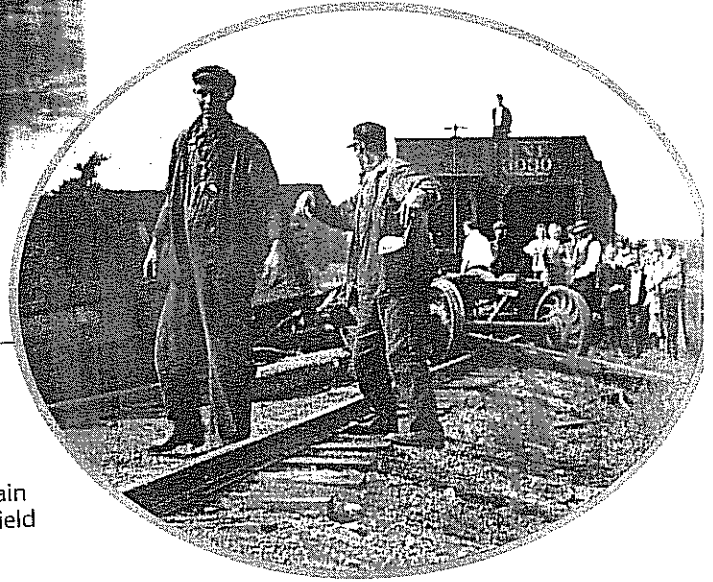
P. M.	A. M.	A. M.		A. M.	P. M.	P. M.
3.30	8.40		Hartford	10.35		6.15
			Blue Hills			
3.42	8.55		Bloomfield	10.20		6.00
4.00	9.15		Tariffville	10.00		5.42
			Hoekins			
4.10	9.30		Simsbury	9.50		5.32
4.17	9.40		Stratton Brook	9.40		5.25
			Canton			
4.32	10.00		Collinsville	9.15		5.07
*	*		Pine Meadow	*		*
4.50	10.20		New Hartford	8.55		4.50
5.10	10.43	8.30	Winsted	8.30	3.35	4.20
5.15	10.50	8.33	West Winsted	8.20	3.30	4.15
*	*	*	South Norfolk	*	*	*
5.45	11.20	9.05	Norfolk	7.45	2.45	3.48
*	*	*	West Norfolk	*	*	*
*	*	*	East Canaan	*	*	*
6.16	11.50	9.35	Canaan	7.00	1.45	3.19
*	*	*	Twin Lakes	*	*	*
*	*	*	Chapinville	*	*	*
6.39	12.13	9.58	Salisbury	6.30	1.20	2.55
6.45	12.20	10.07	Lakeville	6.20	1.12	2.49
6.52	12.27	10.15	Ore Hill	6.10	1.05	2.43
7.00	12.35	10.23	Millerton	6.00	12.55	2.35

Stars (*) show where Trains stop to leave or take passengers on signal, or when Conductor is notified.

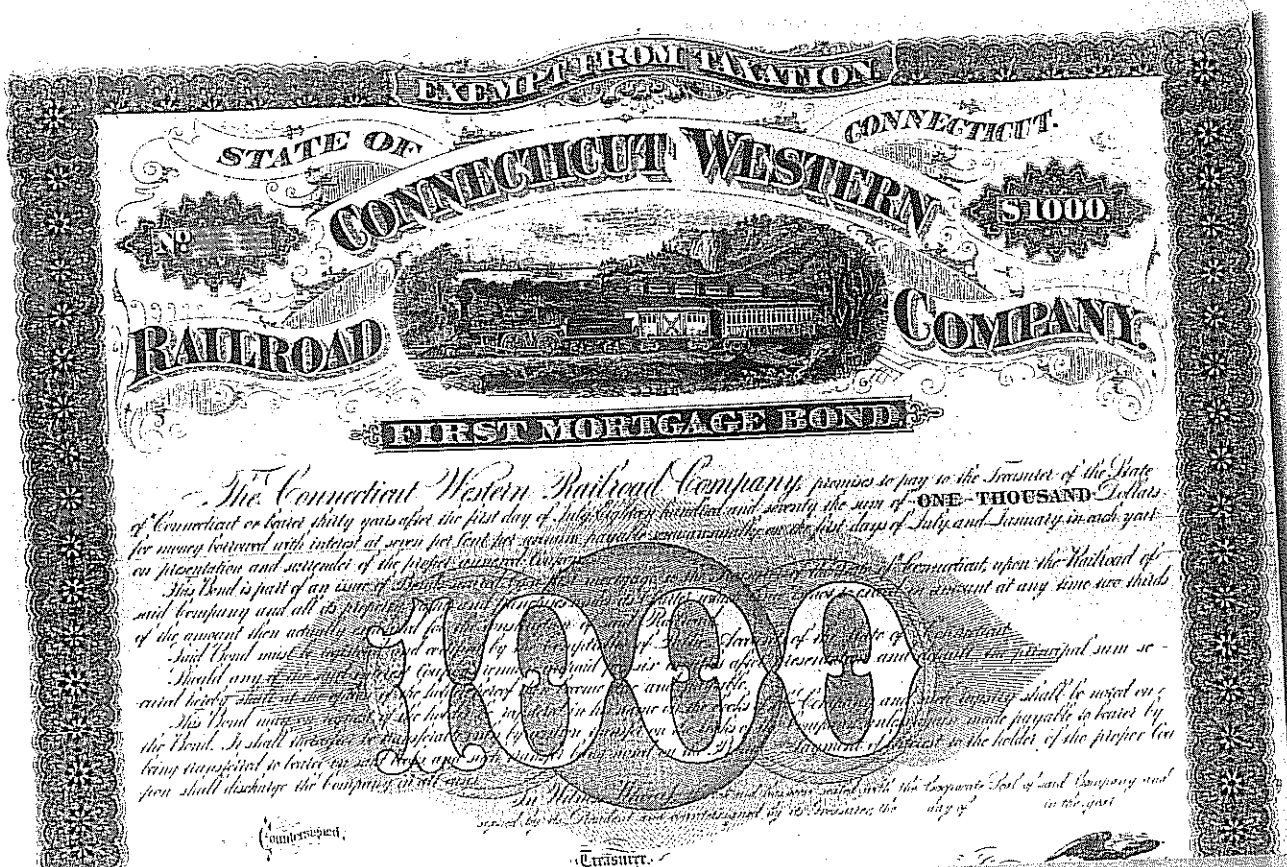
This 1871 timetable does not include that part of the total system which extended into New York state as outlined in the History of the C.N.E. Neither does the total station stops nor the names coincide with those on the map (see pages 26-27). Time tables were changed periodically.



Steam engine on the Twin Lakes trestle



Wreck of the C.N.E. train near the Lakeville ballfield



A railroad bond



Allied Engineering Assoc LLC

95 Main Street 3rd Floor – East

PO Box 726

Canaan, CT 06018

860-824-1400

860-824-1401 fax

allied-engineering@snet.net

Professional Services Agreement

This agreement is to confirm that engineering services are to be performed by Allied Engineering Assoc LLC herein after referred to as ENGINEER. The services are requested by:

NAME Town of Salisbury, CT – Salisbury Pathways Committee
TITLE
ADDRESS 27 Main Street, PO Box 548
CITY Salisbury
STATE CT
ZIP CODE 06068
TELE.
EMAIL
FAX

Herein after referred to as CLIENT:

1. **SCOPE OF SERVICES:** The services to be provided shall be as indicated below:

Provide Engineering Services to provide the following: D.O.T. Mapping/Property Line Research, Field Survey work to include topographic, utilities, etc., and prepare a base map that can be used for future layout design development. This is for the Area between Meadow Street and Brook Street in Salisbury, CT.

Wetlands Flagging is not included in this Scope of Work, this will be required from an outside Soil Scientist if any wetlands are discovered.

2. **FEE:** The Flat Rate Fee for the above described services shall be as follows:

Flat Rate Fee for the services as described above to be \$2,500.

Any application fees and/or Torrington Area Health District Fees will be paid by the CLIENT.

CLIENT will only be billed for time worked on the project regardless of the estimate amount.

(x) A retainer in the amount of \$1,000 will be required prior to the start of the above described engineering services. This amount will be credited to the CLIENT in the billing for the above mentioned services.

It is understood that CLIENT is responsible for scheduling and paying for an excavator for soil testing and/or any other additional services, such as surveying, geotechnical or environmental services that may be needed in conjunction with the engineering services provided hereunder.

3. SPECIAL CONDITIONS: The CLIENT understands that:

Preparation and submission of plans does not guarantee approval. All of ENGINEER'S fees shall be paid by CLIENT regardless of whether project is approved or not.

4. LIMITATION OF LIABILITY: To the maximum extent permitted by law, the Client agrees to limit the Consultant's liability for the Client's damages to the sum of the Consultant's fee. This limitation shall apply regardless of the cause of action or legal theory pled or asserted. Engineer is not responsible for location of underground utilities.

5. FURNISHING OF DOCUMENTS: The following quantity of drawings, specifications, estimates and other documents to be furnished by ENGINEER are included in the above mentioned price. A total of 6 (six) sets of plans are included in pricing. After 6 (six) sets the client will be billed at a cost of \$1.00 per sheet.

6. ESTIMATED COMPLETION DATE: The estimated time frame for completion of the above mentioned services shall be as follows:

Property Research can begin within 2 weeks of receipt of signed contract and retainer.

As Built Drawings will not be filed with the Governing Agency (Town/Health District, etc.) until invoices are paid.

In the event that the ENGINEER is obstructed or delayed in the completion of the services mentioned above by any act of the CLIENT or the CLIENT'S agent or by any act beyond the control of the ENGINEER including, but not limited to, inclement weather, illness, strikes, failure of equipment, unanticipated degree of difficulty encountered in performing said services, or delay created within or by approving agencies, then the time frame mentioned above shall be extended as required for the completion of the above mentioned services.

7. TERMINATION: This agreement may be terminated by either party upon five (5) days written notice by mutual consent or in the event of persistent failures of performance per the terms and conditions of this agreement by one or the other party through no fault of the terminating party. The ENGINEER shall then be paid for services completed up to the date of termination based upon the above described fee.

8. OWNERSHIP OF DOCUMENTS: All documents, including original drawings, specifications, estimates, sketches, field notes and data are and shall remain the sole and exclusive property of the ENGINEER as instruments of service. The CLIENT may, at their expense, obtain record prints of drawings, in consideration of which the CLIENT will use them solely in connection with the above described project and not for the purpose of making subsequent extensions or enlargements thereof or for other projects.

9. PAYMENT: CLIENT will be billed monthly for work performed each month. Unless otherwise specified herein, payment for the above described services shall be due within thirty (30) days of such billing. Balances unpaid after thirty (30) days shall be subject to

a monthly service charge of one and one half percent (1 ½ %) on the then unpaid balance (18% true annual rate). In the event that any portion or all of this account remains unpaid after ninety (90) days, the CLIENT shall pay all costs of collection including attorney's fees. If invoices are not paid within 60 days from the date of billing, all work on the project will stop until invoices are brought up to date.

10. **AMENDMENT OF AGREEMENT:** This agreement may be amended only in writing signed by the CLIENT and the ENGINEER.

11. **APPLICABLE LAW:** Unless otherwise specified, this agreement shall be governed by the laws of the State of Connecticut.

IN WITNESS WHEREOF, CLIENT and ENGINEER have executed this three page agreement at North Canaan, Connecticut, on the date set forth with each signature.

CLIENT (Signature)

DATE

CLIENT (Print)

ENGINEER (Signature)

DATE

George Johannesen, P.E.
ENGINEER (Print)

This offer for services, unless accepted, will expire in thirty (30) days from the date next to the ENGINEER'S signature.

Salisbury Pathways Committee

Ninth Meeting

Date and Time: Monday, for May 18, 2015, at 5:30 p.m.

Location: Salisbury Town Hall, Downstairs Meeting Room, first floor.

Present: Katherine Kiefer, Natalia Smirnova, Frank Shinneman, Chris Williams.

Minutes:

5:30 p.m. – call to order.

1. Approval of the Minutes of the April 20 meeting.

Minutes approved as written unanimously.

2. Report on the AEA Agreement execution and the progress of the work on the D.O.T.

Mapping/Property Line Research.

The AEA Agreement for work on DOT Mapping/Property Line Research executed by Curtis Rand and Frank Shinneman was given to AEA. AEA did not yet execute it. Frank and Kitty are to follow-up with AEA to get the work started.

3. Report on the COG meeting on May 14 in Torrington – Kitty Kiefer.

Kitty attended the meeting. Region 1 towns plus Norfolk and Goshen were present. They discussed the scheduling of highway maintenance. Currently the highways should last 20 years, but due to chemicals used during the winter, the highways do not last 20 years without repair. Kitty reported that Rt. 44 will be repaved soon: from North Canaan to Millerton.

4. Report on the NACTO Bikeway Workshop – Chris Williams.

Chris Williams attended the meeting on April 23, 2015. At that meeting a consultant from Portland, OR, described their successes and challenges with creation of biking and walking lanes. Bike and Walk CT presented a plan for development of biking and walking in the urban areas in CT. There are no grants for sidewalks. Bigger towns will get the money if money become available.

Bike and Walk CT is designing bike lanes for a “12 years old white girl” profile. The bike lanes should be 8-10 feet wide to allow 2 bikes go side-by-side. Plastic barriers will identify lanes. CT has to pay attention to snow removal. Oregon only cares about leaves removal, for which they have a specially designed machine.

5. Comment about DOT drainage engineer about the pipe by the Meadow Street – Pat Hackett.
Pat was not present at the meeting, so this comment will be heard next time.

6. Citizens Comments.

No citizens were present.

7. New Business.

- Frank Shinneman said that he is moving out of town, so he will resign from this committee on June 15, 2015. We need to find a replacement for Frank.

- Preliminary Agenda for June 15, 2015, Meeting:
 - 1) Report on the AEA Agreement execution and the progress of the work on the D.O.T. Mapping/Property Line Research – Kitty or Frank;
 - 2) Comment about DOT drainage engineer about the pipe by the Meadow Street – Pat Hackett.
 - 3) Frank Shinneman replacement;
 - 4) Citizens Comments;
 - 5) New Business.

Meeting adjourns at 6:02 p.m.

Minutes respectfully submitted by Natalia V. Smirnova, Secretary, on May 24, 2015.

Minutes approved unanimously as written on June 15, 2015.

Salisbury Pathways Committee

Eleventh Meeting

Date and Time: Monday, July 20, 2015, at 5:30 p.m.

Location: Salisbury Town Hall, Downstairs Meeting Room, first floor.

Present: Katherine Kiefer, Natalia Smirnova, Chris Williams, Pat Hackett, Peggy O'Brien.

Minutes:

5:30 p.m. – call to order.

1. Approval of the Minutes of the June 15 meeting.

Approved unanimously with two misspelling corrections.

2. Report on the AEA Agreement execution and the progress of the work on the D.O.T.

Mapping/Property Line Research – Natalia.

Natalia presented the e-mail communication with AEA regarding the progress of the base map completion. The current state of affairs is: 1) the retainer check of \$1,000 was received by AEA; 2) Mat Kiefer has finished the field work. Now he will do calculations and the map. The date of completion of this work was given as Tuesday, July 21, 2015. Natalia will follow-up with AEA to obtain the map by the next meeting.

3. Wetlands Commission meeting – Pat and Chris.

Pat and Chris attended the Wetlands Commission meeting on July 13, 2015 at 6:30 p.m. in Town Hall. They informed the Commission about our work on the extension of the sidewalk for the emergency evacuation route for the SCS to bring them up to date.

The agenda of the Wetlands Commission was amended to reflect their presentation:

“The agenda was approved unanimously with the following additions: 1) A preliminary discussion with Chris Williams and Pat Hackett for the Pathways Committee to create a sidewalk extension from the SCS school to the new firehouse (which would require a stream crossing and/or culvert,...” The agenda of Wetlands Commission is attached.

4. Report on the progress of informing the property owners along Route 44 between Meadow Street and the New Fire House where the sidewalk is to be constructed. – Kitty.

Kitty reported that she started drafting the letter to home owners, but decided to wait until the map will be completed and we will know for sure which properties will be affected.

5. Citizens Comments – no comments were made.

6. New Business:

- a. Election of the new Chair of the Pathways Committee due to Frank Shinneman's resignation. Kitty Kiefer was nominated by Chris Williams and seconded by Peggy O'Brien. Kitty Kiefer was elected unanimously to be the Chair of the Salisbury Pathways Committee.
- b. Skipping August meeting. Next meeting is on September 21, 2015.
- c. Preliminary agenda for September 21, 2015:
 - i. Mapping/Property Line Research: map should be done, committee to discuss the map and the next steps of the project;
 - ii. Draft letter to property owners to inform them of the project: based on the property line research discuss the letter to property owners;
 - iii. Discussion of the adjustments to design expectations for the Meadow Street to Brook Street (New Firehouse) segment of the pathway. Committee will brainstorm how to negotiate with AEA and how to obtain funding for the next stages of the project.

Meeting adjourns at 6:01 p.m.

Minutes respectfully submitted by Natalia V. Smirnova, Secretary, on July 26, 2015.

SALISBURY CONSERVATION COMMISSION
MEETING MINUTES - DRAFT
July 13, 2015, 2015
6:30 PM SALISBURY TOWN HALL

Present: Members Larry Burcroff, Rod Lankler, Steve Belter, Lynn Meehan, Davin Lindy; Attorney Mark Capecelatro, Engineer Pat Hackett, Attorney Bob D'Andrea, Architect John Allee, Mat Kiefer, Chris Williams, Curtis Rand.

The meeting was called to order at 6:40 pm. Curtis Rand reported that Administrator Peter Oliver was recovering from knee surgery.

The agenda was approved unanimously with the following additions: 1) A preliminary discussion with Chris Williams and Pat Hackett for the Pathways Committee to create a sidewalk extension from the SCS school to the new firehouse (which would require a stream crossing and/or culvert, and 2) Discussion of conversation with Mr. Oliver, Mr. Rand and DEEP Wetlands administrator Darcy Winthur about procedural issues relating to permit forms.

- 1) McClearn property reconstruction, 112 South Shore Road. Attorney Capecelatro was present representing the McClearns. Mr. Capecelatro explained that the application would involve no expansion of any building footprint, and it includes a relocated storm drain within the regulated area. This pipe currently drains directly into the lake, while the new proposed drain would empty into a rain garden before entering the lake. A section of new roof would be added over an existing porch and the roof drains would also empty into the rain garden. Mr. Capecelatro also noted that the existing bituminous material on the site will be replaced by porous pavement, which will now more than satisfy the requirements of the Salisbury Planning and Zoning Commission (P&Z). Mr. Capecelatro also mentioned that the P&Z had approved this application, conditional on approval from the Conservation Commission (CC).

Mr. Belter described a site visit made to the property by several members of the CC in the last week. Mr. Belter moved approval of the McClearn application, Rod Lankler seconded the motion and it was approved unanimously.

- 2) Mr. Blass has applied to the CC for a culvert replacement at the Blackwell property, 105 Taconic Road. The proposed culvert is on the driveway to the Blackwell property and would be a pre-cast concrete culvert. According to the application, engineering data have been developed by Ralph Stanton. Mr. Belter mentioned that several members had made a site visit to the proposed repair, noting that although the stream under the culvert was in high flow, it could be better achieved during a dry period.

Mr. Belter moved approval of the Blass application, pending engineering data to be received by the CC. Rod Lankler seconded the motion and it was approved unanimously.

- 3) The Commission has received an application for Preliminary Review from Hamlet Hill Farm to construct an additional farm pond. The CC noted that they will seek more information concerning soils, wetlands, and alternatives.

Mr. Belter made a motion that a final application be presented to the Conservation Commission and that the proposal be referred to the NW Conservation District for technical assistance; Rod Lankler seconded the motion and it was approved unanimously.

Mr. Rand was present to describe a recent conversation with DEEP Wetlands Administrator Darcy Winthur at the request of several CC members concerning application forms. Ms. Winthur reviewed to Commission's application forms and recommends changing the language on the Preliminary Review form to include the exemptions for jurisdictional exceptions in the wetland regulations.

Rod Lankler made a motion to change the Preliminary Review application to reflect language from DEEP concerning jurisdictional exemptions, this was seconded by Lynn Meehan and approved unanimously.

For the Commission, Acting Secretary
Curtis Rand July 15, 2015

Salisbury Pathways Committee

Twelfth Meeting

Date and Time: Monday, September 21, 2015, at 5:30 p.m.

Location: Salisbury Town Hall, Downstairs Meeting Room, first floor.

Present: Katherine Kiefer, Natalia Smirnova, Chris Williams, Peggy O'Brien.

Minutes:

5:33 p.m. – call to order.

1. Approval of the Minutes of the July 20, 2015 meeting.
Minutes approved unanimously.
2. Mapping/Property Line Research: map is done, committee to discuss the map and the next steps of the project.
Natalia presented the map produced by AEA. Chris Williams explained to the committee and the citizens, who were in attendance, that now we understand the situation with the topology of the area. It looks like the right-of-way will be enough to construct a state-mandated 5 feet wide sidewalk, as well as to be 5 feet away from the pavement. The copy of the map will be brought by Kitty to the Selectmen meeting on October 5th to ask for the next round of funding for the project. The hard copy of the original drawing will be stored at Committee's Secretary's files. An electronic copy of the map is attached.
3. Draft letter to property owners to inform them of the project: based on the property line research discuss the letter to property owners.
Now we are ready to draft the letter to property owners. Kitty will draft the letter and Chris will help to edit it. Next meeting we will discuss.
4. Discussion of the adjustments to design expectations for the Meadow Street to Brook Street (New Firehouse) segment of the pathway. Committee to brainstorm how to negotiate with AEA and how to obtain funding for the next stages of the project.
Natalia presented the updated Estimate of Professional Services from AEA. (Attached)
To continue the project we need to have \$4,000 for the Phase 1B: points 4, 5, 6.
Committee decided to take the following steps:
 1. Kitty will present at Selectmen meeting on October 5 and will try to get the sum of \$4,000 or \$10,000 for the next stages in the Town budget.
 2. Since DOT will be paving Route 44, Chris will reach out and try to argue that DOT will do the work on the pipe's extension.
 3. Kitty will explore COG and Berkshire Taconic Foundation for the grants
 4. Peggy will reach out to Wendy Hamilton to ask about funding she was able to obtain for the Dog Park.

5. Peggy will reach to the Economic Development Committee to find out about funding opportunities.

5. Citizens Comments.

There were two citizens present at the meeting. Both were interested in seeing the map and learning about the Committee's achievements so far. They participated in the discussion of funding opportunities for "Meadow Street to Brook Street" part of the project. They also gave some suggestions about funding sources at the state level and from private foundations.

6. New Business.

Natalia reported that she was asked to join the Salisbury Board of Education. If she gets elected, there will be a conflict between the dates of committee and board meetings. Committee members decided that they will adjust their meeting dates/times to accommodate the work of the Board of Ed.

Chris reported that he is running for the Board of Finance position. Committee agreed to accommodate the schedule of that committee if Chris gets elected.

For now, the dates for the next three meetings are as follows: October 19, November 16, and December 21.

Preliminary Agenda for October 19 meeting:

1. Approval of minutes for September 21, 2015;
2. Review the letter to the property owners along "Meadow Street to Brook Street" section;
3. Report on October 5 Selectmen meeting and the fate of \$4,000 budget need;
4. Report on all assignments listed in number (4) above.

Meeting adjourns at 6:15 p.m.

Minutes respectfully submitted by Natalia V. Smirnova, Secretary, on September 25, 2015.



Allied Engineering Assoc LLC

95 Main Street 3rd Floor – East
P.O. Box 726
North Canaan, CT 06018
860-824-1400
860-824-1401 fax
allied-engineering@snet.net

Salisbury Pathways Project
Estimate of Professional Services

Meadow Street to Brook Street (New Firehouse)

1. Design Development/Base Preparation Phase

Estimated Fee: \$6,500

Services to include the following:

Phase 1a:
(Completed)

Phase 1b

- 1. D.O.T. Mapping/Property Line Research
2. Field Survey (topographic, utilities, etc.)
2. Base Map Preparation
3. Site Visit(s)
4. Preliminary Layout/Design
5. Preparation of Cost Estimate based on Preliminary Design
6. Presentation to Pathway Committee for review/comment.

2. Approval/Permit Phase

Estimated Fee: \$1,000

Services to include the following:

- 1. Presentation of approved design (by Pathway Committee) to Town of Salisbury for support and funding, if required.
2. Submit to State and local agencies for permitting (CTDOT, Planning & Zoning, and Conservation Commission).
3. Meetings associated with Approval Process.

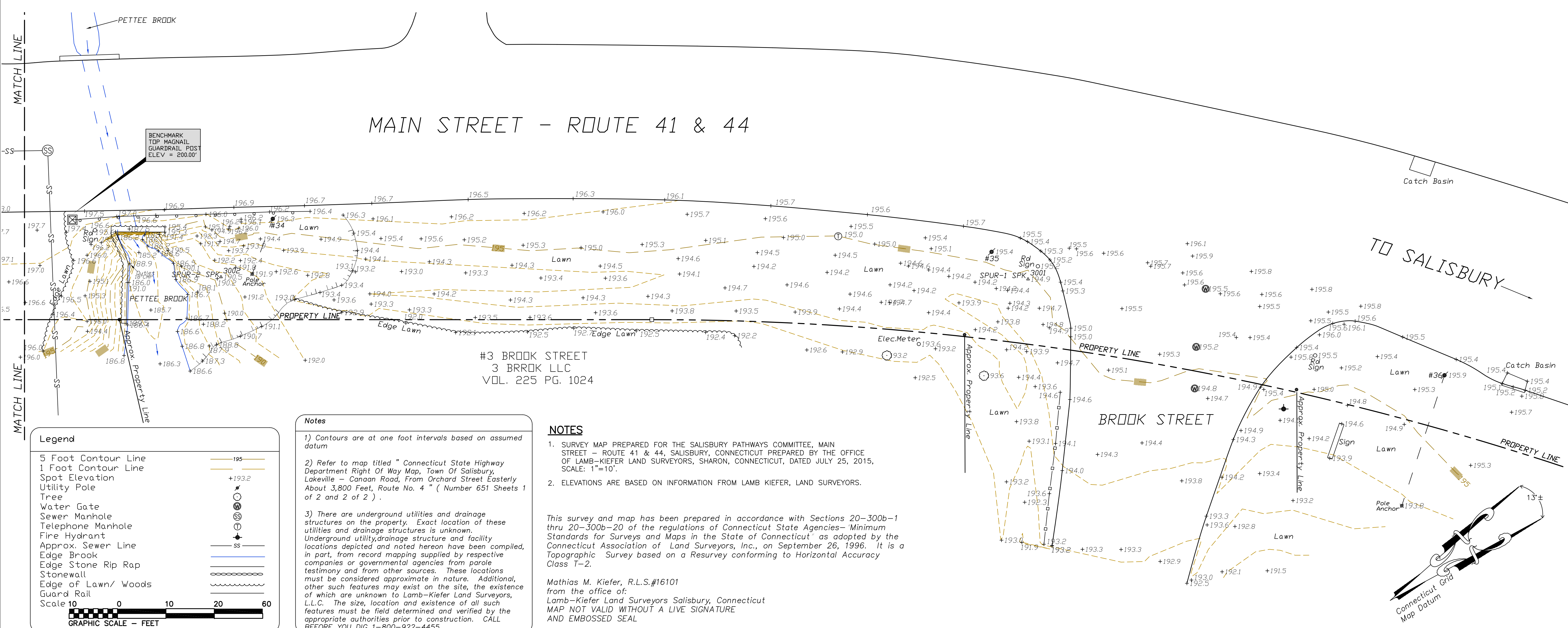
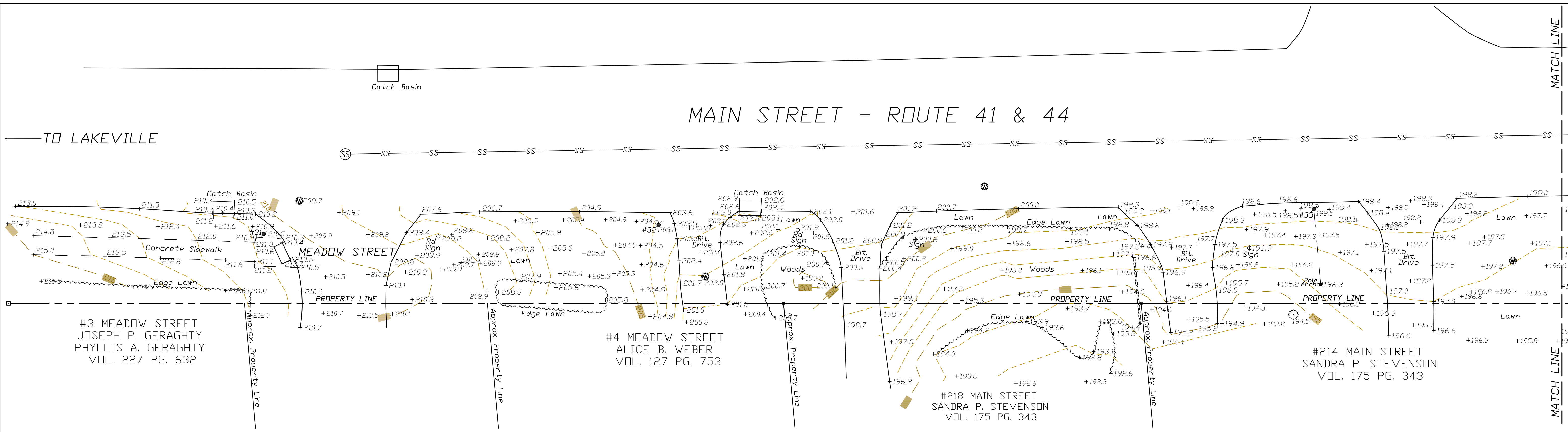
3. Construction Documentation/Bid Phase

Estimated Fee: \$4,500

Services to include the following:

- 1. Based on approved permit drawings generate construction drawings and specifications for bidding purposes.
2. Assist Town with the bidding process (contractor list, bid review, etc.).

Total Estimated Engineering Fees: \$12,000



Legend

5 Foot Contour Line	— 195 —
1 Foot Contour Line	— 193.2 —
Spot Elevation	+193.2
Utility Pole	⊙
Tree	⊗
Water Gate	⊕
Sewer Manhole	⊗
Telephone Manhole	⊕
Fire Hydrant	⊕
Approx. Sewer Line	— SS —
Edge Brook	— — —
Edge Stone Rip Rap	— — —
Edge of Lawn/ Woods	— — —
Guard Rail	— — —

Scale 0 10 20 60
GRAPHIC SCALE - FEET

Notes

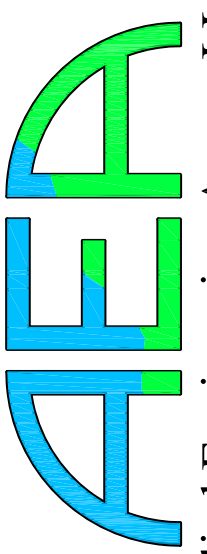
- 1) Contours are at one foot intervals based on assumed datum
- 2) Refer to map titled " Connecticut State Highway Department Right Of Way Map, Town Of Salisbury, Lakeville - Canaan Road, From Orchard Street Easterly About 3,800 Feet, Route No. 4 " (Number 651 Sheets 1 of 2 and 2 of 2) .
- 3) There are underground utilities and drainage structures on the property. Exact location of these utilities and drainage structures is unknown. Underground utility, drainage structure and facility locations depicted and noted hereon have been compiled, in part, from record mapping supplied by respective companies or governmental agencies from parole testimony and from other sources. These locations must be considered approximate in nature. Additional, other such features may exist on the site, the existence of which are unknown to Lamb-Kiefer Land Surveyors, L.L.C. The size, location and existence of all such features must be field determined and verified by the appropriate authorities prior to construction. CALL BEFORE YOU DIG 1-800-922-4455.

NOTES

1. SURVEY MAP PREPARED FOR THE SALISBURY PATHWAYS COMMITTEE, MAIN STREET - ROUTE 41 & 44, SALISBURY, CONNECTICUT PREPARED BY THE OFFICE OF LAMB-KIEFER LAND SURVEYORS, SHARON, CONNECTICUT, DATED JULY 25, 2015, SCALE: 1"=10'.
2. ELEVATIONS ARE BASED ON INFORMATION FROM LAMB KIEFER, LAND SURVEYORS.

This survey and map has been prepared in accordance with Sections 20-300b-1 thru 20-300b-20 of the regulations of Connecticut State Agencies- Minimum Standards for Surveys and Maps in the State of Connecticut" as adopted by the Connecticut Association of Land Surveyors, Inc., on September 26, 1996. It is a Topographic Survey based on a Resurvey conforming to Horizontal Accuracy Class T-2.

Mathias M. Kiefer, R.L.S.#16101
from the office of:
Lamb-Kiefer Land Surveyors Salisbury, Connecticut
MAP NOT VALID WITHOUT A LIVE SIGNATURE AND EMBOSSED SEAL



Allied Engineering Assoc. LLC
95 Main St., 2nd Fl., East
P.O. Box 2700, Salisbury, CT 06018
860-824-1400 (office) 860-824-1401 fax
allied-engineering@aee.net

PREVIOUS NUMBER - DESCRIPTION - DATE - INITIAL

EXISTING CONDITIONS PLAN
MEADOW STREET TO BROOK STREET
PREPARED FOR
SALISBURY PATHWAYS COMMITTEE
MAIN STREET - ROUTE 41 & 44
SALISBURY, CONNECTICUT

SCALE: 1"=10'
FILE NAME: 626-SITE-1
DATE: JULY 30, 2015
ISSUED FOR: REVIEW
PROJECT NO. 626
DRAWING NO. C-1

Salisbury Pathways Committee

Tenth Meeting

Date and Time: Monday, June 15, 2015, at 5:30 p.m.

Location: Salisbury Town Hall, Downstairs Meeting Room, first floor.

Present: Katherine Kiefer, Natalia Smirnova, Frank Shinneman, Chris Williams, Pat Hackett, Peggy O'Brien.

Minutes:

5:34 p.m. – call to order.

1. Approval of the Minutes of the May 18 meeting.

Minutes approved unanimously as written.

2. Report on the AEA Agreement execution and the progress of the work on the D.O.T.

Mapping/Property Line Research

Natalia reported that she obtained a copy of the executed AEA Agreement for the Base Map, which is attached.

Natalia also reported that she was in communication with Bob Gilchrest of AEA, who stated that they "did indeed receive the signed PSA, however we still have not yet received the retainer check. George has reached out to Matt Kiefer (Lamb-Kiefer Land Surveyors) to start the survey work. Matt has it on his schedule to start as soon as he can. We have no definitive date from him yet but will let you know as soon as we do. Once we get his survey information we'll put together a base map which we can use moving forward." -- from the e-mail on Friday, June 12, 2015 12:02 PM.

The next steps for the Committee are:

- (1) get the retainer check drawn and sent to AEA. Natalia is to e-mail a copy of executed contract to Kitty and to Joe Cleveland, Town Comptroller, with the request to draw the retainer check.
- (2) Natalia is to send an e-mail to Mat Kiefer to ask for a timeframe for completion of his survey work.

Report on the progress next time.

3. Comment about DOT drainage engineer about the pipe by the Meadow Street – Pat Hackett.

Pat reported that he and Kitty have met with DOT drainage engineer, Claire Marie, at the culvert to inspect the pipe. Result: as long as the Wetlands Commission approves the extension of the pipes underneath the road, DOT will sign off for the issuance of the permit to extend the pipe.

The next step of the Committee is:

- (1) Pat and Chris are to go to the Wetlands Commission meeting to preliminary inform them of what the plans are and get their feedback.

Report on the progress next time.

Kitty suggested that we should inform the property owners along Route 44 between Meadow Street and the New Fire House where the sidewalk is to be constructed. Committee agreed that this is the best course of action. Kitty is to draft a letter to property owners with the attachment of the Salisbury Central School (SCS) Letter of Support signed by the SCS Principal, Ms. Carter, and by BOE Chairperson, Mr. Rolo, from October 30, 2014 (attached).

Report on the progress next time.

4. Frank Shinneman replacement.

Frank Shinneman submitted his official resignation letter to the Committee. The Committee accepted the resignation and thanked Frank for his service. Kitty Kiefer nominated Peggy O'Brien to fill in Frank Shinneman's term, which is to expire on August 11, 2016.

Peggy O'Brien told the Committee that she is an attorney by training, she is a resident of Salisbury, and she is active in the community service on various committees. She thinks pathways are a great idea and she wants to contribute to the work on this committee.

5. Citizens Comments – no citizens present.

6. New Business.

Kitty Kiefer brought to the attention of the committee the potential ideas within the Landscaping Plan from the Lakeville Conservancy.

Meeting adjourns at 6:17 p.m.

Minutes respectfully submitted by Natalia V. Smirnova, Secretary, on June 18, 2015.

Minutes approved unanimously with two corrections on July 20, 2015.



Allied Engineering Assoc LLC

95 Main Street 3rd Floor – East

PO Box 726

Canaan, CT 06018

860-824-1400

860-824-1401 fax

allied-engineering@snet.net

Professional Services Agreement

This agreement is to confirm that engineering services are to be performed by Allied Engineering Assoc LLC herein after referred to as ENGINEER. The services are requested by:

NAME Town of Salisbury, CT – Salisbury Pathways Committee
TITLE
ADDRESS 27 Main Street, PO Box 548
CITY Salisbury
STATE CT
ZIP CODE 06068
TELE.
EMAIL
FAX

Herein after referred to as CLIENT:

1. **SCOPE OF SERVICES:** The services to be provided shall be as indicated below:

Provide Engineering Services to provide the following: D.O.T. Mapping/Property Line Research, Field Survey work to include topographic, utilities, etc., and prepare a base map that can be used for future layout design development. This is for the Area between Meadow Street and Brook Street in Salisbury, CT.

Wetlands Flagging is not included in this Scope of Work, this will be required from an outside Soil Scientist if any wetlands are discovered.

2. **FEE:** The Flat Rate Fee for the above described services shall be as follows:

Flat Rate Fee for the services as described above to be \$2,500.

Any application fees and/or Torrington Area Health District Fees will be paid by the CLIENT.

CLIENT will only be billed for time worked on the project regardless of the estimate amount.

(x) A retainer in the amount of \$1,000 will be required prior to the start of the above described engineering services. This amount will be credited to the CLIENT in the billing for the above mentioned services.

It is understood that CLIENT is responsible for scheduling and paying for an excavator for soil testing and/or any other additional services, such as surveying, geotechnical or environmental services that may be needed in conjunction with the engineering services provided hereunder.

3. SPECIAL CONDITIONS: The CLIENT understands that:

Preparation and submission of plans does not guarantee approval. All of ENGINEER'S fees shall be paid by CLIENT regardless of whether project is approved or not.

4. LIMITATION OF LIABILITY: To the maximum extent permitted by law, the Client agrees to limit the Consultant's liability for the Client's damages to the sum of the Consultant's fee. This limitation shall apply regardless of the cause of action or legal theory pled or asserted. Engineer is not responsible for location of underground utilities.

5. FURNISHING OF DOCUMENTS: The following quantity of drawings, specifications, estimates and other documents to be furnished by ENGINEER are included in the above mentioned price. A total of 6 (six) sets of plans are included in pricing. After 6 (six) sets the client will be billed at a cost of \$1.00 per sheet.

6. ESTIMATED COMPLETION DATE: The estimated time frame for completion of the above mentioned services shall be as follows:

Property Research can begin within 2 weeks of receipt of signed contract and retainer.

As Built Drawings will not be filed with the Governing Agency (Town/Health District, etc.) until invoices are paid.

In the event that the ENGINEER is obstructed or delayed in the completion of the services mentioned above by any act of the CLIENT or the CLIENT'S agent or by any act beyond the control of the ENGINEER including, but not limited to, inclement weather, illness, strikes, failure of equipment, unanticipated degree of difficulty encountered in performing said services, or delay created within or by approving agencies, then the time frame mentioned above shall be extended as required for the completion of the above mentioned services.

7. TERMINATION: This agreement may be terminated by either party upon five (5) days written notice by mutual consent or in the event of persistent failures of performance per the terms and conditions of this agreement by one or the other party through no fault of the terminating party. The ENGINEER shall then be paid for services completed up to the date of termination based upon the above described fee.

8. OWNERSHIP OF DOCUMENTS: All documents, including original drawings, specifications, estimates, sketches, field notes and data are and shall remain the sole and exclusive property of the ENGINEER as instruments of service. The CLIENT may, at their expense, obtain record prints of drawings, in consideration of which the CLIENT will use them solely in connection with the above described project and not for the purpose of making subsequent extensions or enlargements thereof or for other projects.

9. PAYMENT: CLIENT will be billed monthly for work performed each month. Unless otherwise specified herein, payment for the above described services shall be due within thirty (30) days of such billing. Balances unpaid after thirty (30) days shall be subject to

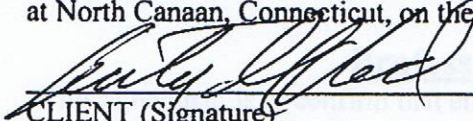
Signed

a monthly service charge of one and one half percent (1 1/2 %) on the then unpaid balance (18% true annual rate). In the event that any portion or all of this account remains unpaid after ninety (90) days, the CLIENT shall pay all costs of collection including attorney's fees. If invoices are not paid within 60 days from the date of billing, all work on the project will stop until invoices are brought up to date.

10. **AMENDMENT OF AGREEMENT:** This agreement may be amended only in writing signed by the CLIENT and the ENGINEER.

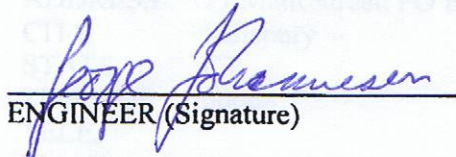
11. **APPLICABLE LAW:** Unless otherwise specified, this agreement shall be governed by the laws of the State of Connecticut.

IN WITNESS WHEREOF, CLIENT and ENGINEER have executed this three page agreement at North Canaan, Connecticut, on the date set forth with each signature.


CLIENT (Signature)

4/20/2015
DATE

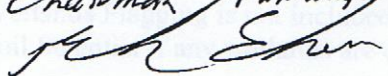
George Rand
CLIENT (Print)


ENGINEER (Signature)

5/06/15
DATE

George Johannesen, P.E.
ENGINEER (Print)

This offer for services, unless accepted, will expire in thirty (30) days from the date next to the ENGINEER'S signature.

Frank Shinneman
Chairman Pathways Committee


2. FEE: The Flat Fee for the above described services shall be as follows:

The Flat Fee for the services as described above shall be \$2,500.

Any application fees and/or Torrington Area Health District Fees will be paid by the CLIENT.

CLIENT will only be billed for time worked on the project regardless of the estimate amount.

(3) A retainer in the amount of \$1,000 will be required prior to the start of the above described engineering services. This amount will be credited to the CLIENT in the billing for the above mentioned services.

SALISBURY CENTRAL SCHOOL
P.O. BOX 1808
45 LINCOLN CITY ROAD
LAKEVILLE, CT 06039

Ms. Lisa Carter
Principal

Ph# 860-435-9871
Fax# 860-435-2689

October 30, 2014

Dear Members of the Salisbury Pathways Committee:

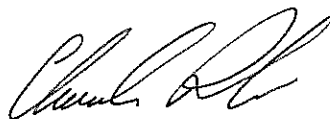
We are writing to express our support for the Salisbury Pathways sidewalk construction project. Each year we conduct an emergency evacuation to the Lakeville Hose Company. All of our students and faculty walk down Route 44 for this effort. Currently the sidewalk ends at Meadow Street. The proposed "Connector" project would continue the walkway all the way to the fire house and make our journey that much safer and easier. This is particularly important for students, faculty and staff who may be on crutches and/or using a wheelchair. In addition, in the event of an emergency that requires the use of both buildings (Salisbury Central is a designated emergency shelter); a complete sidewalk route would facilitate foot travel between the two buildings.

We hope that this input is helpful in your decision-making process.

Sincerely,



Ms. Lisa Carter
Principal



Claude Rolo
Chairperson, Board of Education

cc: Salisbury Board of Selectmen

Success For All

Salisbury Central School does not discriminate on the basis of race, color, national origin, sex, disability, or age in its programs and activities. The following person has been designated to handle inquiries regarding the non-discrimination policies: Director of Pupil Services, 236 Warren Turnpike Road, Falls Village CT 06031 Telephone: (860) 824-5639.

Salisbury Pathways Committee

Thirteenth Meeting

Date and Time: Monday, October 19, 2015, at 5:30 p.m.

Location: Salisbury Town Hall, Upstairs Meeting Room, second floor.

Present: Katherine Kiefer, Natalia Smirnova, Chris Williams, Peggy O'Brien, Pat Hacket.

Minutes:

5:32 p.m. – call to order.

1. Approval of minutes for September 21, 2015:

Minutes approved unanimously.

2. Review the letter to the property owners along “Meadow Street to Brook Street” section:

The draft of the letter was distributed and discussion commenced. After the discussion, Kitty Kiefer is to incorporate all the comments/suggestions and e-mail the letter to the committee members. The letter with all comments/suggestions is attached. Kitty now has to show it to other Selectmen and the send to the residents.

3. Report on October 5 Selectmen meeting and the fate of \$4,000 budget need:

Kitty reported that in order for us to get in the Salisbury Town budget for next year we need to submit a formal request to the Selectmen. Natalia is to draft this letter and send to Kitty together with the Estimate of Professional Services from AEA. Natalia is also to include the letter of support from the Board of Education. Kitty is to forward this request to the Selectmen to be out into the budget for 2016. Kitty is to copy the following people/entities on the e-mail: Emily Egan, Joe Cleveland, Donny Reed, Conservation Commission, P&Z.

4. Report on all assignments:

- Since DOT will be paving Route 44, Chris will reach out and try to argue that DOT will do the work on the pipe's extension:

Chris reported that there is no word from DOT. Chris will keep on top of this.

- Kitty will explore COG and Berkshire Taconic Foundation for the grants:
Kitty reported that she did not attend the COG. Has to follow-up.
- Peggy will reach out to Wendy Hamilton to ask about funding she was able to obtain for the Dog Park:
Peggy reported that the Dog Park was privately funded.
Peggy reported that potential grantors could be: Main Street Investment Fund (program of the State), Infrastructure Investment fund, CT DoT.

5. Citizens Comments: no citizens present.

6. New Business:

Next meeting is to be on Monday, November 23 at 5:30 p.m. in Town Hall.

It is not the third, but rather the fourth Monday of November. This change was made due to the conflict with the Board of Education meeting where Natalia has to be present.

Meeting adjourns at 6:10 p.m.

Minutes respectfully submitted by Natalia V. Smirnova, Secretary, on October 26, 2015.

Draft of the Letter to Residents along Route 44 between Meadow Street and Brook Street:

The Salisbury Pathways Committee is sending this letter to let you know about a sidewalk project in your area. This project is in the early stages of design.

Salisbury Central School has designated the Lakeville Hose Company's new station as the evacuation destination and safe haven for our Town's children, faculty and staff. The current sidewalk from the school to the fire station ends at Meadow St. Our project will extend the sidewalk from Meadow St. to Brook St., which will allow a safe path for all to the new Fire Station.

A sidewalk will also allow pedestrian traffic from the Fire Station to the Center of Lakeville safe passage. The increased foot traffic will be an economic boost to businesses in the area as more people use the sidewalk. With the recent Town acquisition of the Brook St right of way (from Routes 44 & 41 to the Railway Ramble), Town residents will have easier access to bike and walk on the Ramble as well as the option to cross country ski in the winter months.

As earlier stated, we are in the early stages of feasibility and design. The proposed sidewalk location would be fully in the State's right of way and would conform to all statutes such as grade, safety, and handicap accessibility. This letter is to let you know that we are working on this and welcome your input at any and all phases of the project.

Thank you

Salisbury Pathway Committee

Members are: Katherine Kiefer, Natalia Smirnova, Christian Williams, Pat Hackett, and Peggy O'Brien

Salisbury Pathways Committee

Fourteenth Meeting

Date and Time: Monday, November 23, 2015, at 5:30 p.m.

Location: Salisbury Town Hall, Downstairs Meeting Room, first floor.

Present: Katherine Kiefer, Natalia Smirnova, Chris Williams, Peggy O'Brien, Pat Hackett.

Minutes:

5:29 p.m. – call to order.

1. Approval of minutes for October 19, 2015;

Minutes approves as amended.

2. Report on the result of the request for \$9,500 submitted to the Selectmen meeting of November 5 – Kitty Kiefer;

Kitty Kiefer reported that she presented our request for funds and the map. Curtis took the map and will take it to DOT. Selectmen did not approve \$9,500 because other expenses are coming up.

After discussion we decided to ask Kitty to present an updated request for \$4,750 to Selectmen meeting on December 7. This would cover phase 1 of the project and account for price increase contingency.

3. Discussion of other means of getting the funding;

- Infrastructure Investment Fund – Peggy is to talk to Jacelyn Ayer to get more information;
- DOT grant – when they pave route 44 – they might be willing to include some into their budget – Kitty is to find out;
- Salisbury Fire Commission – find out if they are ready to renovate the Fire House – Kitty;
- Board of Education – Natalia is to bring it up at the BoE meeting to see if they will be willing to contribute.

4. Approval of schedule of meetings for 2016:

Salisbury Pathways Committee meets every third Monday of the month. Exceptions for 2016 will be: February – we will meet on February 29; and September – we will meet on September 26, 2016.

Below is the approved schedule of meetings for 2016:

January 18
February 29 * (fourth Monday)
March 21
April 18
May 16
June 20
July 18
August 15
September 26 * (fourth Monday)
October 17
November 21
December 19

5. Citizens Comments.

No comments were made.

6. New Business:

- Letter to abutters: Kitty gave it to Selectmen to approve. Next Selectmen meeting Kitty is to find out what the status is.
- Next meeting will be on Monday, December 14.
- Preliminary Agenda for December 14, 2015:
 - DOT – map – Kitty;
 - Infrastructure Investment Act – Peggy;
 - Budget for \$4,750 -- Kitty;
 - Letter to abutters – Kitty.

Meeting adjourns at 6:13 p.m.

Minutes respectfully submitted by Natalia V. Smirnova, Secretary, on November 24, 2015.

Salisbury Pathways Committee

Fifteenth Meeting

Date and Time: Monday, December 14, 2015, at 5:30 p.m.

Location: Salisbury Town Hall, Downstairs Meeting Room, first floor.

Present: Katherine Kiefer, Natalia Smirnova, Chris Williams, Pat Hackett.

Minutes:

5:29 p.m. – call to order.

1. Approval of the minutes for November 23, 2015;

Minutes approves as written.

2. DOT – map – Kitty;

- DOT does not yet know when they will pave Rt. 44, and the details of the pavement plan are not yet finalized. This is important for us because it could be possible to ask DOT to do the culvert before the pavement. Chris is to keep in communication with the DOT.

- We need to revisit the map to see if there is enough space for right-of-way on the other side of Rt. 44. The sidewalk job will be longer there than on the other side, but the terrain is more conducive to pavement. Pat is to analyze the map to determine if there is enough space for right-of-way.

3. Infrastructure Investment Act – Peggy;

Roll over to the next meeting since Peggy is not present.

4. Budget for \$4,750 -- Kitty;

- Kitty reported that \$4,750 is in the budget proposal for 2016. Board of Finance budget meeting is January 14, 2016. Chris will be there and will report afterwards.

- Another idea for funding: if our firehouse is classified as a **regional** emergency shelter, open to use by other towns, then we can make a case to the Regional Emergency Planning Team to allocate the funds for the sidewalk to enhance access to the facility. A copy of the e-mail communication between Curtis Rand, Salisbury First Selectmen, and Rick Lynn, Executive Director of the Northwest Hills Council of Governments is attached.

The Pathways Committee will revisit this in January. Natalia will make a presentation at the Board of Education to inform them of this opportunity. After that we will contact Rick Lynn to see what should be done to apply for such a designation.

5. Letter to abutters – Kitty;

Letter is not to be sent yet. Hold the letter until we know which side of the street is proposed.

6. Citizens Comments.

No comments were made.

7. New Business:

■ Meetings for 2016.

Below is the approved schedule of meetings for 2016:

January 11** (second Monday) -- amended

February 29 * (fourth Monday)

March 21

April 18

May 16

June 20

July 18

August 15

September 26 * (fourth Monday)

October 17

November 21

December 19

■ Preliminary agenda for January 11, 2016 meeting:

1) Right of Way – Pat reviews the map and reports if we have enough space on both sides of rt. 44.

2) Infrastructure Investment Act – Peggy;

Meeting adjourns at 5:55 p.m.

Minutes respectfully submitted by Natalia V. Smirnova, Secretary, on December 21, 2015.

From: Rick Lynn <rlynn@northwesthillscog.org>

Date: December 4, 2015 at 1:48:24 PM EST

To: Curtis Rand <crand@salisburyct.us>

Cc: Jocelyn Ayer <jayer@northwesthillscog.org>, Katherine Kiefer <katherine.kiefer.esq@gmail.com>, Jim Dresser <jdresser@snet.net>, Emily Egan <eeegan@salisburyct.us>, Tom Vannini <Thomas.Vannini@ct.gov>

Subject: Re: Sidewalk extension

Hi Curtis,

Each year DEMHS Region 5, which includes the Town of Salisbury, receives a few hundred thousand dollars for homeland security planning, training, exercising, and equipment. While local officials through the Regional Emergency Planning Team make decisions on how those funds are used, DEMHS has restricted the use to regionally significant items. If the new firehouse were to be classified as a regional emergency shelter, open to use by other towns, then a case could be made to allocate funds for the proposed sidewalk to enhance access to the facility. If you wish to explore this possibility further, please let me know. By copy of this email, I am advising Tom Vannini, DEMHS Region 5 Coordinator, of your question in case he knows of any other potential Homeland Security Grant funding for your proposed project. Best regards.

Rick

Rick Lynn, AICP

Executive Director

Northwest Hills Council of Governments

59 Torrington Road, Suite A-1

Goshen, CT 06756

Phone: (860) 491-9884

Fax: (860) 491-3729

email: rlynn@northwesthillscog.org

On Fri, Dec 4, 2015 at 11:39 AM, Curtis Rand <crand@salisburyct.us> wrote:

Hi Rick and Jocelyn, A major objective of the Salisbury Pathways Committee is to extend a portion of the sidewalk between Salisbury Central School and the new firehouse in between the villages of Lakeville and Salisbury. The firehouse is the emergency evacuation center for the school, and the portion of the sidewalk that has not yet been constructed needs to traverse a brook along Rt 44.

Question for you: do you know of any funds in Homeland Security that would allow us to extend this short section of sidewalk?

Thanks.

CR
