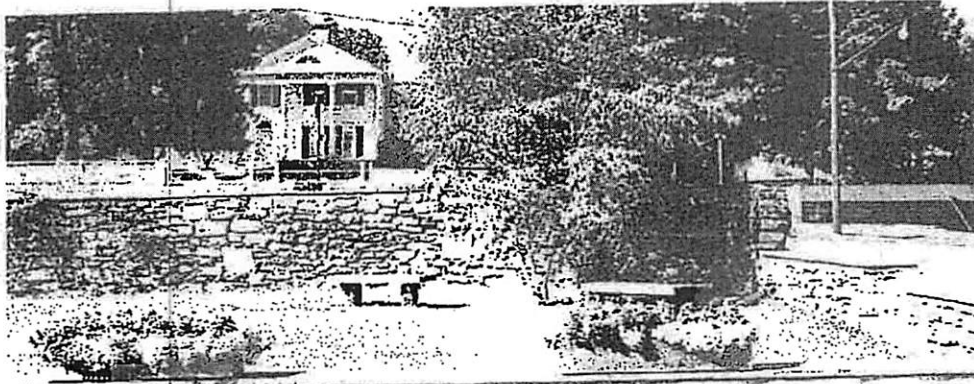


TAB G



Photograph by Mary Lou Estabrook

SALISBURY'S BICENTENNIAL PARK

By William Bartle Barnett

It is appropriate that we should dedicate on this July 4th, 1976 a Bicentennial Park located in such an historic section as the Colonial Ethan Allen Furnace area, the Furnace Village center where it may be viewed from the Holley-Williams House.

The Holley Block Building, built in 1883, the foundation of which is now the attractive boundary of the park, was in its heyday an important business landmark for well over a generation.

On the first floor of this three story wooden building were housed some of the leading business establishments of the village. Facing Main Street, in my time, there was a drug store, a rather large grocery and dry goods store and the United States Post Office. The second floor provided living apartments in the front. The rear consisted of "Union Hall" with kitchen facilities. The hall was used as a meeting place for the G.A.R. (Grand Army Of The Republic). Military relics of the Civil War were displayed and the walls were covered with pictures of the conflict and of important Union soldiers. The public could and did rent the facilities for meetings, social parties and dances. The third floor was exclusively occupied by Montgomery Lodge No. 13, Free and Accepted Masons, whose original charter was signed by Paul Revere and Hematite Chapter No. 43, Royal Arch Masons.

The original commercial building on this location was moved off its foundation, westerly, to a new location to make room for the construction of the new Holley Block and is now occupied by a barber shop and a beauty parlor.

The Holley Block structure deteriorated in its last few years until it became obsolescent, uninhabited, a definite fire and physical safety hazard in the village.

It was at this time in 1967 that a family, long interested in the beautification of the town, made possible by a financial contribution the removal of the building and the creation of the attractive space now to be named Bicentennial Park.

It was with mixed emotions that I, as first selectman of a quarter century, supervised the demolition of this proud monument of a passed era but was pleased to see the fine end result designed by S. Norton Miner and was gratified at the thought of how much this garden-like improvement will add to the life of the town.