

ZONING DATA

ZONE RR3

	REQUIRED/ ALLOWED	EXISTING
LOT SIZE (AC)	2.75	10.4±
LOT FRONTAGE (FT)	25	400
FRONT YARD (FT)	40	162±
SIDE YARD (FT)	30	72±
REAR YARD (FT)	30	300±
IMPERVIOUS COVERAGE (%)	N/A	9.7

CITATIONS

Boundary information from map intitled "Map Prepared for, Town Hill School, Inc., Route 112 - Interlaken Road, "Lakeville", Salisbury, Connecticut, Scale 1"=50', September 5, 1995", prepared by Lamb-Kiefer Land Surveyors.

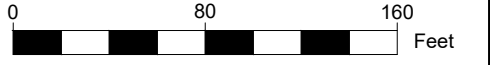
Capitol Region Council of Governments. (2016). 2016 Aerial Imagery. Retrieved from <http://cteco.uconn.edu/data/flight2016/index.htm> (<http://cteco.uconn.edu/daa/flight2016/index.htm>).

Capitol Region Council of Governments. (2016). 2016 Lidar DEM. Retrieved from <http://cteco.uconn.edu/data/flight2016/index.htm> (<http://cteco.uconn.edu/daa/flight2016/index.htm>).

Wetlands delineated by Ralph Stanton, Soil Scientist 1997, and field located by Lamb-Kiefer, Land Surveyors

75' Upland Review Area

MEANDERING STONE DUST PATH, 5' WIDE x 270'± LONG



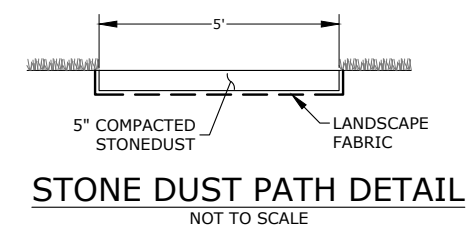
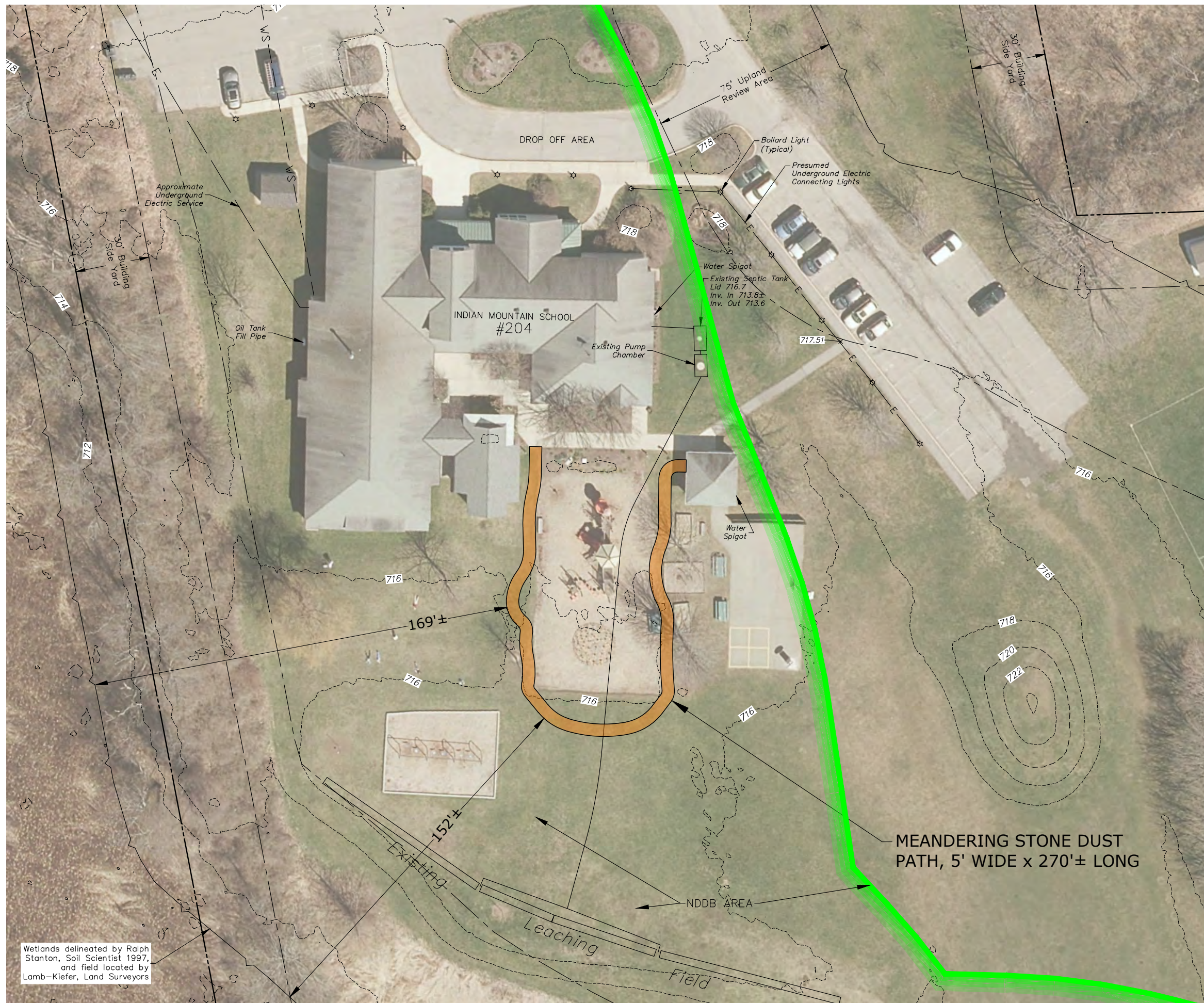
HALEY WARD
ENGINEERING | ENVIRONMENTAL | SURVEYING
140 Willow Street, Suite 8
Winsted, CT 06098
860.379.6669

STONE DUST PATHWAY
INDIAN MOUNTAIN SCHOOL
204 INTERLAKEN ROAD - SALISBURY, CT

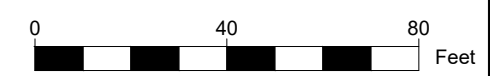
OVERALL SITE PLAN

DATE	February 16, 2023	SCALE	1" = 80'
DRAWN BY	JS	DESIGNED BY	TAP
		CHECKED BY	TAP
PROJECT No.	23-103		
DRAWING No.	1 of 2		

K:\024503-103 Indian Mountain School - Stone Dust Pathway\Map\Design\Printing 2/16/2023 1:17 PM



STONE DUST PATH DETAIL
NOT TO SCALE



HALEY WARD
ENGINEERING | ENVIRONMENTAL | SURVEYING
140 Willow Street, Suite 8
Winsted, CT 06098
860.379.6669
WWW.HALEYWARD.COM

STONE DUST PATHWAY
INDIAN MOUNTAIN SCHOOL
204 INTERLAKEN ROAD - SALISBURY, CT

DETAILED SITE PLAN

DATE	February 16, 2023	SCALE	1" = 80'
DRAWN BY	JS	DESIGNED BY	TAP
		CHECKED BY	TAP
PROJECT No.	23-103		
DRAWING No.	2 of 2		

Wetlands delineated by Ralph Stanton, Soil Scientist 1997, and field located by Lamb-Kiefer, Land Surveyors

K:\024503-103 Indian Mountain School - Stone Dust Pathway\Map\Design\Printing 2/16/2023 1:18 PM