

TOWN OF SALISBURY, CONNECTICUT  
HISTORIC DISTRICT COMMISSION

APPLICATION FOR CERTIFICATE OF APPROPRIATENESS

Appl. No. \_\_\_\_\_ Name of property Congregational Church of Salisbury, UCC  
Ctf. Issued \_\_\_\_\_ Ctf. No. \_\_\_\_\_ Property No. \_\_\_\_\_  
Date \_\_\_\_\_

Application is hereby made for the issuance of a Certificate of Appropriateness under an "Ordinance Establishing Historic Districts within the Town of Salisbury", duly adopted on February 9, 1970 and enacted pursuant to the enabling authority contained in Sections 7-147(a) through 7-147(k) of the General Statutes of Connecticut, for the proposed work described below and as shown on the photographs, plans, or drawings (where applicable or appropriate), accompanying this application:

Address of proposed work 30 Main Street, Salisbury, CT 06068

Owner Congregational Church of Owner's address 30 Main Street, Salisbury, CT 06068  
Salisbury, UCC

Applicant, if not owner \_\_\_\_\_


Agent or contractor MHR Development, LLC (203) 228-6846

Address P.O. Box 1034, New Canaan, CT 06840-1034

Proposed work is in connection with: \_\_\_\_ a dwelling; \_\_\_\_ an accessory building;  
\_\_\_\_ a commercial building; \_\_\_\_ an industrial building; X other (specify) church

Nature and description of proposed work (attach extra sheets as necessary);

HVAC Option A: Replace one existing and install three new white and off-white colored electrical HVAC units adjacent to the building foundation, please see attached sheets for details.

Signature of Applicant  (Pastor John Nelson)

Action taken:

Planning and Zoning Commission \_\_\_\_\_ Date \_\_\_\_\_

Building Inspector \_\_\_\_\_ Date \_\_\_\_\_

Historic District Commission \_\_\_\_\_ Date \_\_\_\_\_

### Option A (East Side): HVAC Submission Summary – Historic Commission COA

One replacement and three new HVAC units to be located along the east wall of the church by the Library Street corner.

Note, due to clearance requirements, the existing propane tank may be moved farther to the back of the east wall closer to the Kitchen.

#### Dimensions of New Outdoor Units

	Sanctuary	Parish Hall 1 <sup>st</sup> Floor	Parish Hall 2 <sup>nd</sup> Floor (Lennox Replacement)	Parish Hall 2 <sup>nd</sup> Floor (Remaining Rooms)
Width	48 13/16"	36 5/8"	35 7/16"	36 5/8"
Depth	29 29/32"	29 29/32"	14 9/16"	29 29/32"
Height	66 17/32"	66 17/32"	45 7/8"	66 17/32"

Note: Outdoor units will be mounted on concrete or stone pad (approximately 12" height)

**LG-1:** Outdoor unit to be located on the east wall of church by Library Street corner.

**LG-2:** Outdoor unit to be located on the east wall of church by Library Street corner. Exterior linesets will be run on the exterior of the north wall vertically from the height of the interior wall units and will run directly to the ground and into the building.

**LG-3:** Outdoor unit to be located on the east wall of church by Library Street corner. Lineset will be run up the exterior wall into attic space and covered with a line hide (similar to what is currently used for the existing air conditioning unit; however, it will be painted white and not brown).

**LG-4:** Existing Lennox unit to be replaced with new white colored outdoor unit located on the east wall of church. Lineset will be run up the exterior wall into attic space and covered with a line hide (similar to what is currently used for the existing air conditioning unit; however, it will be painted white and not brown).

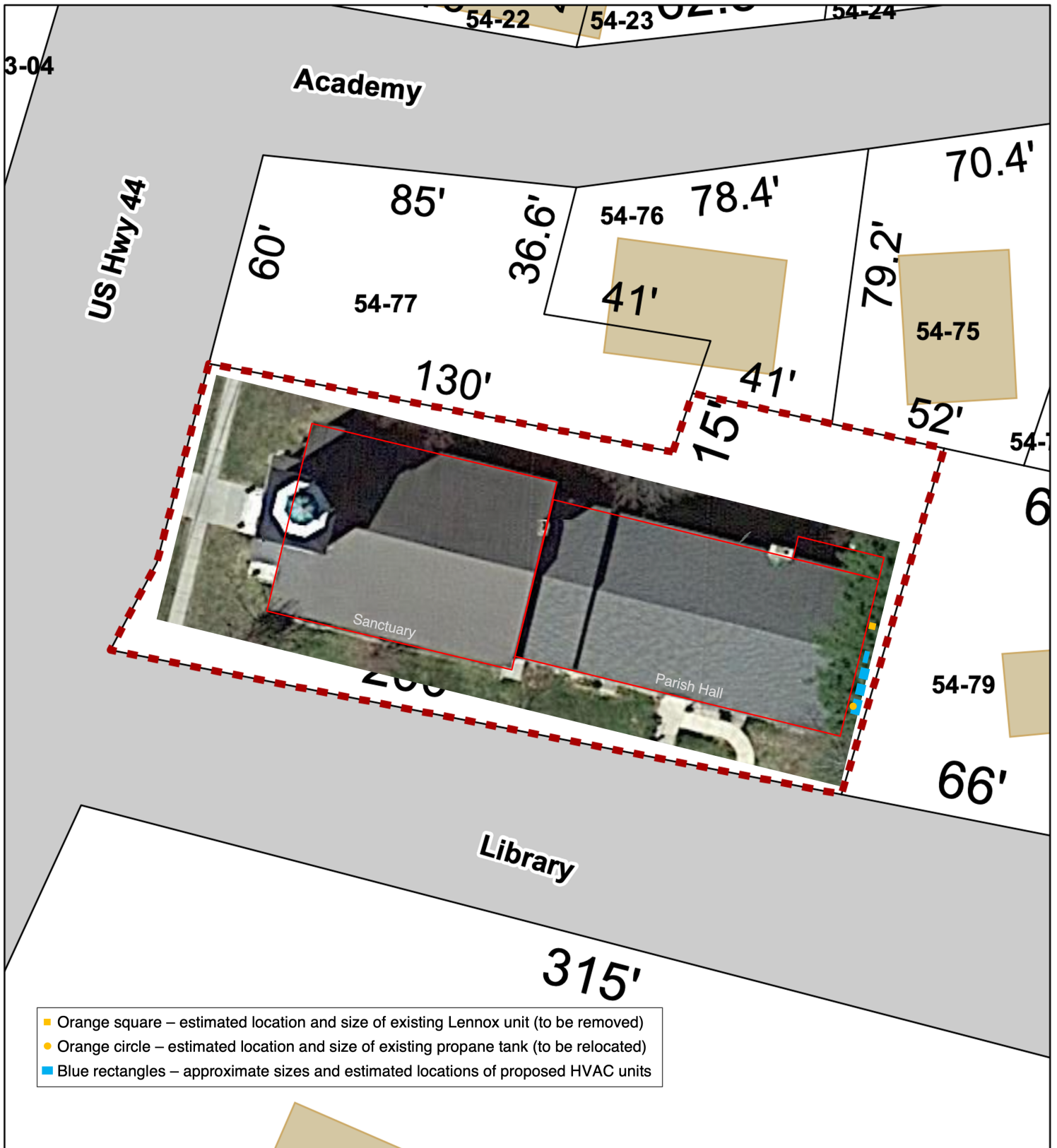
Estimated Existing Lennox Air Conditioner Dimensions: Width: 22 1/4"; Depth: 22 1/4"

# Town of Salisbury, Connecticut - Assessment Parcel Map

Unique ID: 2589

MBL: 54-78

Address: 30 MAIN STREET

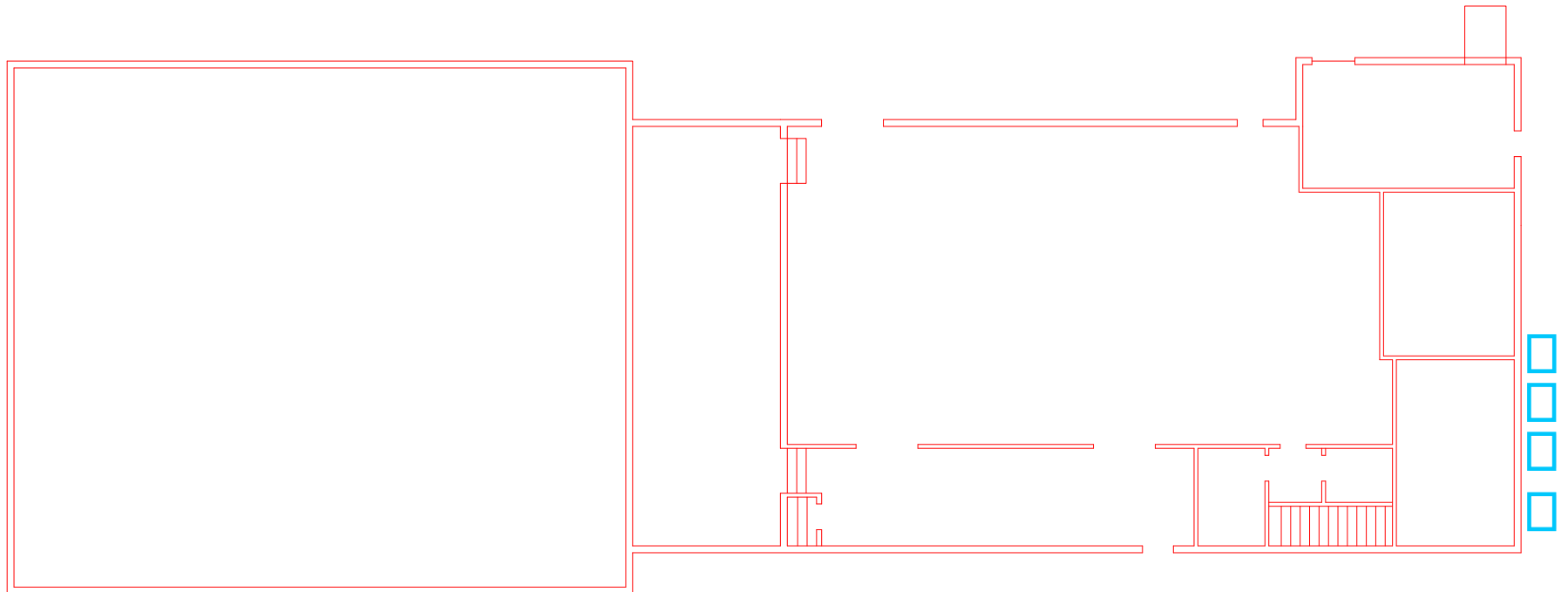


Approximate Scale: 1 inch = 34 feet

Disclaimer: This map is for informational purposes only. All information is subject to verification by any user. The Town of Salisbury and its mapping contractors assume no legal responsibility for the information contained herein.

Map Produced June 2022

## Outdoor Unit Layout





**Job Name/Location:** Salisbury Sanctuary

**Date:**

**For:** ☐ File ☐ Resubmit  
☐ Approval ☐ Other \_\_\_\_\_

**PO No.:**

**Architect:**

**GC:**

**Engr:**

**Mech:**

**Rep:**

(Company)

(Project Manager)

## ARUM121BTE5

Multi V™ 5 with LGRED° 208-230V ODU

10 Ton Single Frame Heat Pump and Heat Recovery

### Performance:

Cooling Mode:

Nominal Capacity (Btu/h)	119,700
Power Input (kW)	7.72

Heating Mode:

Nominal Capacity (Btu/h)	135,000
Power Input (kW)	9.20

Rated capacity is certified under AHRI Standard 1230. Ratings are subject to change without notice. Current certified ratings are available at [www.ahridirectory.org](http://www.ahridirectory.org).

### Electrical:

Frame	ARUM121BTE5
Power Supply (V/Hz/Ø) <sup>1</sup>	208-230/60/3
MOP (A)	40
MCA (A)	30.9
Rated Amps (A)	26.3
Compressor A (A)	18.3
Compressor B (B)	-
Fan (A)	8.0

### Piping:<sup>2</sup>

Frame	ARUM121BTE5
Refrigerant Charge (lbs.)	23.2
Liquid (in., O.D.)	1/2 Braze
High Pressure Vapor (Heat Recov only; in., O.D.)	3/4 Braze
Low Pressure Vapor (in., O.D.)	1-1/8 Braze

### Standard Features:

- Advanced Smart Load Control
- Intelligent Heating
- HiPOR (High Pressure Oil Return)
- Smart Oil Control
- Night Quiet Operation
- Fault Detection and Diagnosis
- Active Refrigerant Control
- Variable Heat Path Exchanger
- Subcooling and Vapor Injection Control
- Liquid Cooled Inverter Controller
- Advanced Comfort Cooling

### Optional Accessories:

- ☐ Air Guide - ZAGDKA52A
- ☐ Hail Guard Kit - ZHGDKA52A
- ☐ Low Ambient Baffle Kit - ZLABKA52A, Control Kit - PRVC2 (1 per system)
- ☐ Base Pan Heater - ZPLT1A52A

**\*\*Cooling range with the Low Ambient Baffle Kit (sold separately) is -9.9°F to +122°F and is achieved only when all indoor units are operating in cooling mode. Does not impact heat recovery system synchronous operating range.**

For continual product development, LG reserves the right to change specifications without notice.

© LG Electronics U.S.A., Inc., Englewood Cliffs, NJ. All rights reserved. "LG Life's Good" is a registered trademark of LG Corp. /[www.lghvac.com](http://www.lghvac.com)

**LG-1**



### Operating Range:

Cooling (°F DB)**	5 - 122
Heating (°F WB)	-22 - 61
Synchronous	
Cooling Based (°F DB)	14 - 81
Heating Based (°F WB)	14 - 61

### Unit Data:

Refrigerant Type	R410A
Refrigerant Control	EEV
Max. Number of Indoor Units <sup>3</sup>	20
Sound Pressure <sup>4</sup> dB(A)	59.0
Weight	
Frame	ARUM121BTE5
Net (lbs.)	507
Shipping (lbs.)	534
Communication Cable (No x AWG) <sup>5</sup>	2 x 18
Heat Exchanger Coating	Black Coated Fin™

### Compressor:

Type	HSS DC Scroll
Quantity	1
Oil / Type	PVE / FVC68D

### Fan:

Type	Propeller
Quantity	2
Motor Drive	Brushless Digitally Controlled Direct
Air Flow Rate (rated/max, CFM)	8,400 / 11,300

### Notes:

1. Power wiring cable size must comply with the applicable local and national codes. Cables terminate at each frame.
2. For main pipe segment size, refer to the LATS Multi V tree diagram.
3. The combination ratio must be between 50-130%.
4. Sound pressure levels are tested in an anechoic chamber under ISO Standard 3745 for the combination of outdoor units.
5. Communication cable between ODU and IDUs must be 2-conductor, 18 AWG, twisted, stranded, and shielded. Ensure the communication cable shield is properly grounded to the Main ODU chassis only. Do not ground the communication cable at any other point. Wiring must comply with all applicable local and national codes.
6. Acceptable operating voltage: 187V - 253V
7. Fan ESP (in wg) selectable range is 0.16 to 0.32.

**LGRED°**  
Powerful Heat Technology



SB\_MultiV\_5\_ODU\_ARUM121BTE5\_2021\_05\_26\_154503

**ARUM121BTE5**

Multi V™ 5 with LGRED° 208-230V ODU

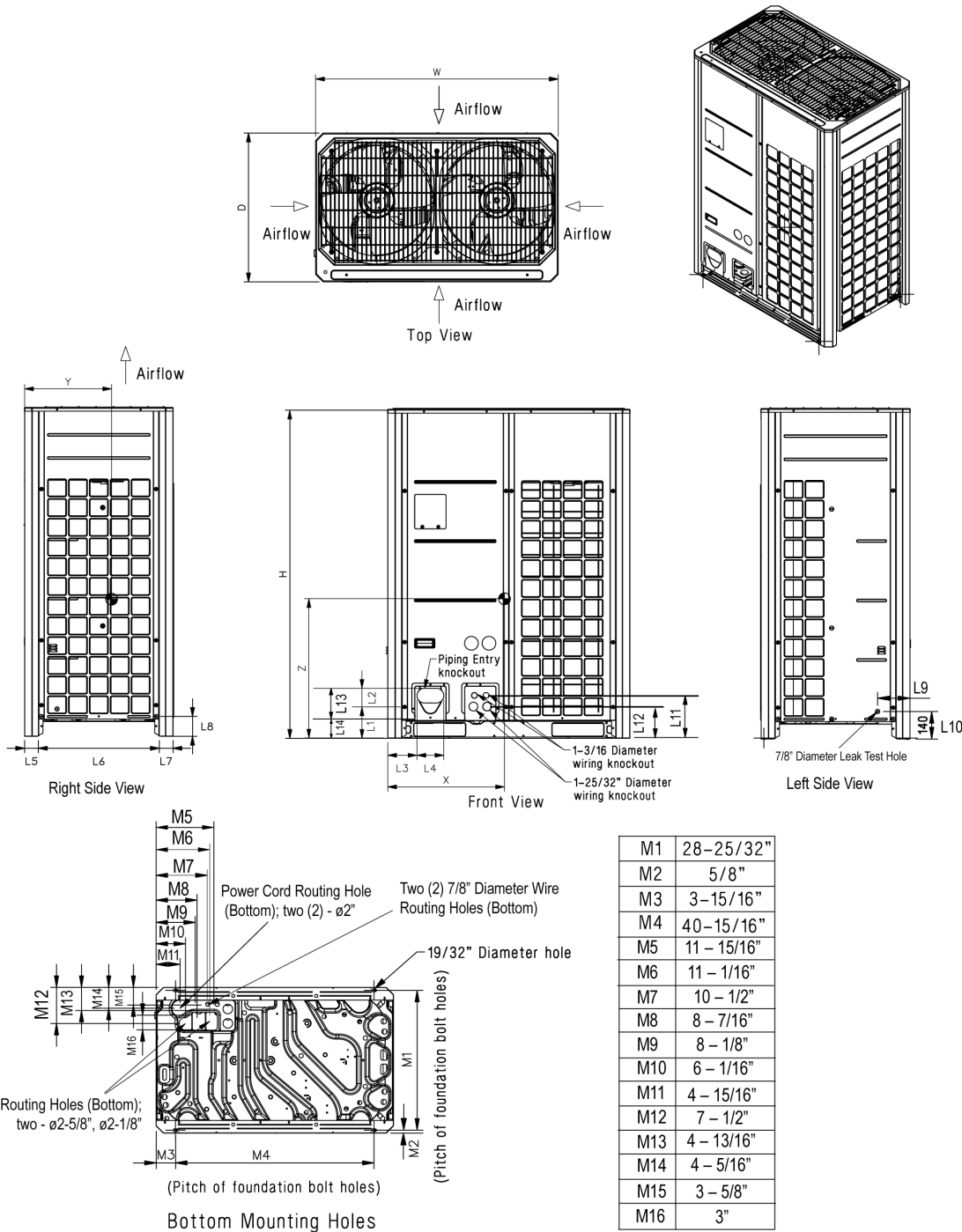
10 Ton Single Frame Heat Pump and Heat Recovery



Tag No.: \_\_\_\_\_

Date: \_\_\_\_\_

PO No.: \_\_\_\_\_



Job Name/Location: Salisbury Sanctuary

LG-1

**ARUM121BTE5**

Multi V™ 5 with LGRED° 208-230V ODU

10 Ton Single Frame Heat Pump and Heat Recovery



**LG**

Life's Good

Tag No.: \_\_\_\_\_

Date: \_\_\_\_\_

PO No.: \_\_\_\_\_

**AHRI Data:**

Reference Number	Indoor Type	Cooling Capacity (95°F)	EER (95°F)	IEER	SCHE	High Heating Capacity (47°F)	High COP (47°F)	Low Heating Capacity (17°F)	Low COP (17°F)
205281462	Ducted Indoor Units	114,000	12.50	24.60	26.40	129,000	3.46	84,000	2.53
202516176	Non-Ducted Indoor Units	114,000	13.10	29.60	31.00	129,000	3.97	84,000	2.74

**Job Name/Location:** Salisbury Parish first and second floor

**Date:**

For: ☐ File ☐ Resubmit  
☐ Approval ☐ Other \_\_\_\_\_

**PO No.:**

**Architect:**

**GC:**

**Engr:**

**Mech:**

**Rep:**

(Company)

(Project Manager)

## ARUM072BTE5

Multi V™ 5 with LGRED° 208-230V ODU

6 Ton Single Frame Heat Pump and Heat Recovery

### Performance:

Cooling Mode:

Nominal Capacity (Btu/h)	72,000
Power Input (kW)	4.28

Heating Mode:

Nominal Capacity (Btu/h)	81,000
Power Input (kW)	5.39

Rated capacity is certified under AHRI Standard 1230. Ratings are subject to change without notice. Current certified ratings are available at [www.ahridirectory.org](http://www.ahridirectory.org).

### Electrical:

Frame	ARUM072BTE5
Power Supply (V/Hz/Ø) <sup>1</sup>	208-230/60/3
MOP (A)	35
MCA (A)	22.6
Rated Amps (A)	19.1
Compressor A (A)	14.1
Compressor B (B)	-
Fan (A)	5.0

### Piping:<sup>2</sup>

Frame	ARUM072BTE5
Refrigerant Charge (lbs.)	14.3
Liquid (in., O.D.)	3/8 Braze
High Pressure Vapor (Heat Recov only; in., O.D.)	5/8 Braze
Low Pressure Vapor (in., O.D.)	3/4 Braze

### Standard Features:

- Advanced Smart Load Control
- Intelligent Heating
- HiPOR (High Pressure Oil Return)
- Smart Oil Control
- Night Quiet Operation
- Fault Detection and Diagnosis
- Active Refrigerant Control
- Variable Heat Path Exchanger
- Subcooling and Vapor Injection Control
- Liquid Cooled Inverter Controller
- Advanced Comfort Cooling

### Optional Accessories:

- ☐ Air Guide - ZAGDKA51A
- ☐ Hail Guard Kit - ZHGDKA51A
- ☐ Low Ambient Baffle Kit - ZLABKA51A, Control Kit - PRVC2 (1 per system)
- ☐ Drain Pan Heater - ZPLT1A51A

\*\*Cooling range with the Low Ambient Baffle Kit (sold separately) is -9.9°F to +122°F and is achieved only when all indoor units are operating in cooling mode. Does not impact heat recovery system synchronous operating range.

For continual product development, LG reserves the right to change specifications without notice.

© LG Electronics U.S.A., Inc., Englewood Cliffs, NJ. All rights reserved. "LG Life's Good" is a registered trademark of LG Corp. /[www.lghvac.com](http://www.lghvac.com)

**LG-2 & LG-3**



### Operating Range:

Cooling (°F DB)**	5 - 122
Heating (°F WB)	-22 - 61
Synchronous	
Cooling Based (°F DB)	14 - 81
Heating Based (°F WB)	14 - 61

### Unit Data:

Refrigerant Type	R410A
Refrigerant Control	EEV
Max. Number of Indoor Units <sup>3</sup>	13
Sound Pressure <sup>4</sup> dB(A)	58.0
Weight	
Frame	ARUM072BTE5
Net (lbs.)	430
Shipping (lbs.)	452
Communication Cable (No x AWG) <sup>5</sup>	2 x 18
Heat Exchanger Coating	Black Coated Fin™

### Compressor:

Type	HSS DC Scroll
Quantity	1
Oil / Type	PVE / FVC68D

### Fan:

Type	Propeller
Quantity	1
Motor Drive	Brushless Digitally Controlled Direct
Air Flow Rate (rated/max, CFM)	6,600 / 8,470

### Notes:

1. Power wiring cable size must comply with the applicable local and national codes. Cables terminate at each frame.
2. For main pipe segment size, refer to the LATS Multi V tree diagram.
3. The combination ratio must be between 50-130%.
4. Sound pressure levels are tested in an anechoic chamber under ISO Standard 3745 for the combination of outdoor units.
5. Communication cable between ODU and IDUs must be 2-conductor, 18 AWG, twisted, stranded, and shielded. Ensure the communication cable shield is properly grounded to the Main ODU chassis only. Do not ground the communication cable at any other point. Wiring must comply with all applicable local and national codes.
6. Acceptable operating voltage: 187V - 253V
7. Fan ESP (in wg) selectable range is 0.16 to 0.32.

**LGRED°**  
Powerful Heat Technology



SB\_MultiV\_5\_ODU\_ARUM072BTE5\_2021\_05\_26\_154503

**ARUM072BTE5**

Multi V™ 5 with LGRED° 208-230V ODU

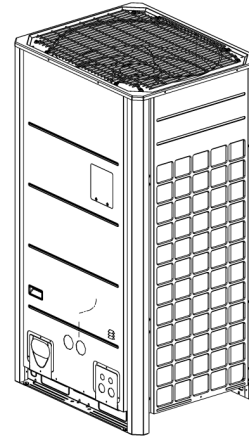
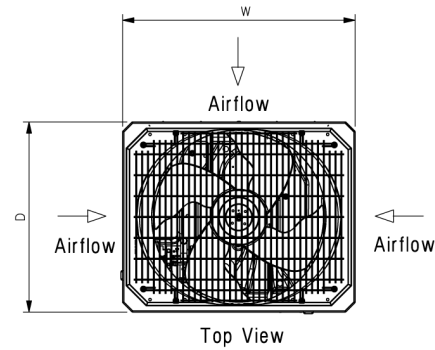
6 Ton Single Frame Heat Pump and Heat Recovery



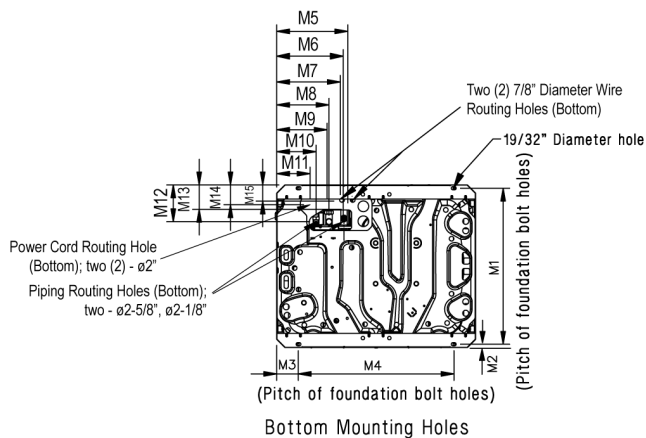
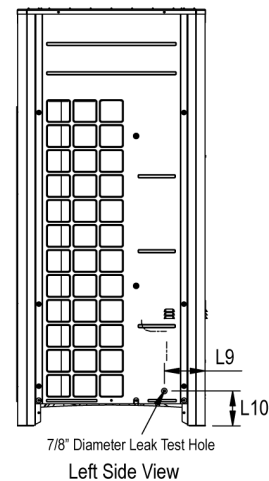
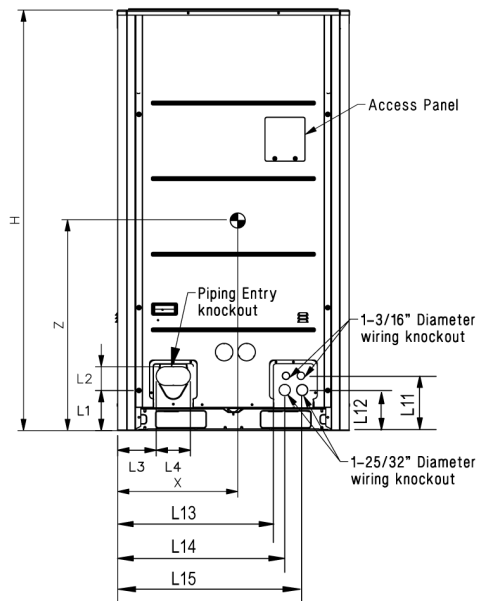
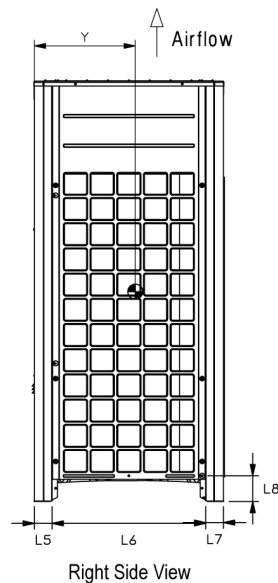
Tag No.: \_\_\_\_\_

Date: \_\_\_\_\_

PO No.: \_\_\_\_\_



W	36-5/8"
H	66-17/32"
D	29-29/32"
L1	6-5/16"
L2	3-3/4"
L3	6-3/32"
L4	5-13/32"
L5	2-25/32"
L6	24-9/32"
L7	2-25/32"
L8	4-1/16"
L9	6-1/2"
L10	5-9/16"
L11	8-5/8"
L12	6-7/16"
L13	24-5/8"
L14	26-7/16"
L15	29-3/16"

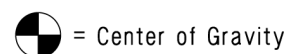


M1	28-25/32"
M2	5/8"
M3	3-31/32"
M4	28-3/4"
M5	13-1/8"
M6	12-5/16"
M7	11-3/4"
M8	9-11/16"
M9	9-5/16"
M10	7-5/16"
M11	6-3/16"
M12	6-13/16"
M13	4-1/2"
M14	3-11/16"
M15	3"

## Center of Gravity

X	18-3/16"
Y	16-5/16"
Z	31-15/32"

All dimensions have a tolerance of  $\pm 0.25$  in.  
[Unit: inch]



Job Name/Location: Salisbury Parish first and second floor

**LG-2 & LG-3**

**ARUM072BTE5**

Multi V™ 5 with LGRED° 208-230V ODU

6 Ton Single Frame Heat Pump and Heat Recovery



**LG**

Life's Good

Tag No.: \_\_\_\_\_

Date: \_\_\_\_\_

PO No.: \_\_\_\_\_

**AHRI Data:**

Reference Number	Indoor Type	Cooling Capacity (95°F)	EER (95°F)	IEER	SCHE	High Heating Capacity (47°F)	High COP (47°F)	Low Heating Capacity (17°F)	Low COP (17°F)
205281456	Ducted Indoor Units	69,000	13.00	23.60	26.10	77,000	3.48	51,000	2.49
202515434	Non-Ducted Indoor Units	69,000	13.40	28.40	28.50	77,000	3.83	51,000	2.66

Job Name : \_\_\_\_\_  
Purchaser : \_\_\_\_\_  
Engineer : \_\_\_\_\_  
Submitted To : \_\_\_\_\_  
Submitted By : \_\_\_\_\_  
Unit Designation : Schedule No.: \_\_\_\_\_

Location : \_\_\_\_\_  
P.O. No. : \_\_\_\_\_  
Architect : \_\_\_\_\_  
Date : \_\_\_\_\_  
For : ☐ Reference ☐ Approval ☐ Construction  
Model No.: \_\_\_\_\_

## Submittal Data : LMU369HV

## Flex Multi-Split Inverter Heat Pump Outdoor Unit



### Standard Features :

- Limited Five Year Compressor Warranty
- Limited Two Year Functional Parts Warranty
- Defrost/Deicing
- Restart delay (3-minutes)
- Self Diagnosis
- Soft Start
- Auto Operation (Artificial intelligence)
- Auto restart operation
- Built-in Low Ambient Standard down to 14°F (cooling mode)
- Gold Fin™ Anti-Corrosion Treatment for Condenser



### Specification :

Capacity (BTUs)	34,000 Class
Power Supply (V, Hz, Ph)	208-230/60/1
Maximum Overcurrent Protection (A)	25
Minimum Circuit Ampacity (A)	20.1
Power Input (Rated)	
Cooling (kW)	2.72
Heating (kW)	3.58
Cooling Running Current (Rated) (A)	11.8
Heating Running Current (Rated) (A)	15.5
Compressor Running Current (Rated) (A)	14.4
Fan Motor Running Current (Rated) (A)	0.55
Communication Cable (No. x AWG)	4 x 18
(Outdoor to Indoor Unit)	
Dimension (WxHxD, inches)	35 7/16 x 45 7/8 x 14 9/16
Net Weight (lbs)	209.4
Max. # of Connectable Indoor Units	4
Refrigerant	
Charge (98.4ft) (lbs)	7.72
Type	R 410a
Control	EEV
Sound Level (±3dB(A))	57

### Specification :

Piping Connections	
Liquid (inches)	1/4 x 4EA
Gas (inches)	3/8 x 4EA
Piping length spec.	
Max. total piping (ft.)	246.1
Max. OD~ID piping (ft.)	82.0
Piping length (no add'l refrigerant, ft.)	98.4
Max. Elevation Difference	
Outdoor Unit ~ Indoor Unit (ft.)	49.2
Indoor Unit ~ Indoor Unit (ft.)	24.6
Operating Range (Outdoor)	
Cooling (°F)	14~115
Heating (°F)	5~75

- Capacities are based on the following conditions :  
Cooling : - Indoor Temperature 80°F DB / 67°F WB  
- Outdoor Temperature 95°F DB / 75°F WB  
Heating : - Indoor Temperature 70°F DB / 60°F WB  
- Outdoor Temperature 47°F DB / 43°F WB  
Piping Length : - Interconnecting Piping Length 24.6ft.  
- Level Difference of Zero
- Wiring cable size must comply with the applicable local and national code.
- The specification may be subject to change without prior notice for purpose of improvement.
- For more capacity(\*) information, refer to the combination tables.

### Combination Performance Table :

System	Combined With	Nominal Cooling Capacity	EER	SEER	Nominal Heating Capacity	COP	Low Heating Capacity	COP	HSPF	Energy Star
		Btu/h	95°F		Btu/h	47°F	Btu/h	17°F		
LMU369HV	Non-Ducted Indoor Unit	34,000	12.50	17.5	41,000	3.40	23,300	2.4	10.5	Yes
	Ducted Indoor Unit	34,000	12.00	16.5	41,000	3.20	25,300	2.6	10.5	
	Mixed Ducted & Non-Ducted	34,000	12.25	17.0	41,000	3.30	24,300	2.5	10.5	

### Note :