

**From:** Curtis Rand <crand@salisburyct.us>

**Sent:** Wednesday, February 28, 2024 10:47 AM

**To:** Abby Conroy <aconroy@salisburyct.us>

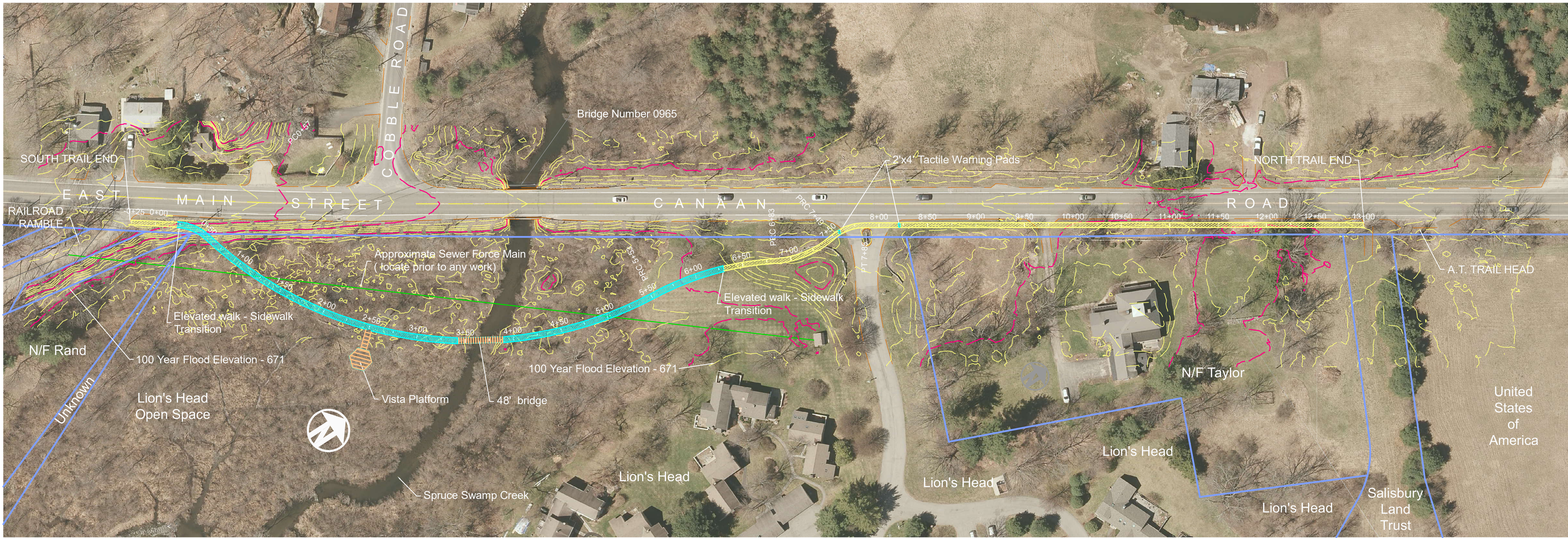
**Cc:** Chris Williams <cwilliams@salisburyct.us>; Pat Hackett <prh@prhacke .com>

**Subject:** Fw: Final Plan set - Attachment C

Good morning Abby, here is a plan of a walking path along/near Rt 44 which is intended to get hikers and strollers off of Rt 44 between the AT, Lions Head condos, and the Rail Trail.

NB - this is probably not a final plan but meant to accompany a grant application for funding. Perhaps you can share with Land Use commissions?

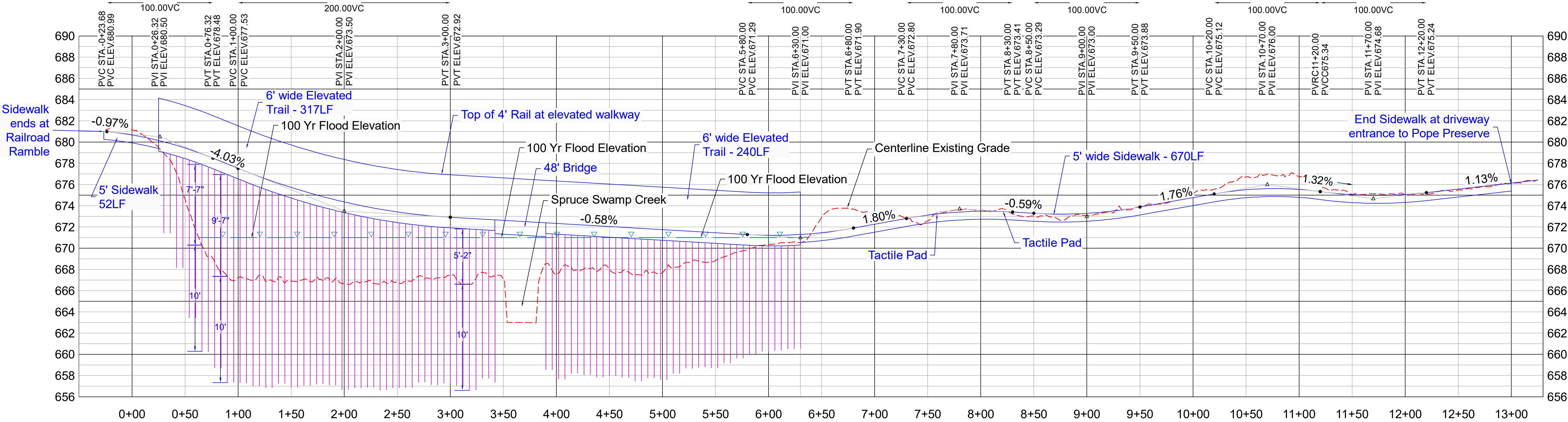
Thanks,  
Curtis



SIDEWALK / TRAIL PLAN

0' 25' 50' 100' 150' 200'

SCALE: 1" = 50'



PROFILE: SIDEWALK / TRAIL

SCALE: 1" = 50' HORIZONTAL, 1" = 5' VERTICAL

Trail Distance:  
Loop Trail ~ 1.3 miles

Difficulty:  
EASY


Leave No Trace,  
keep our preserves clean

Open dawn to dusk

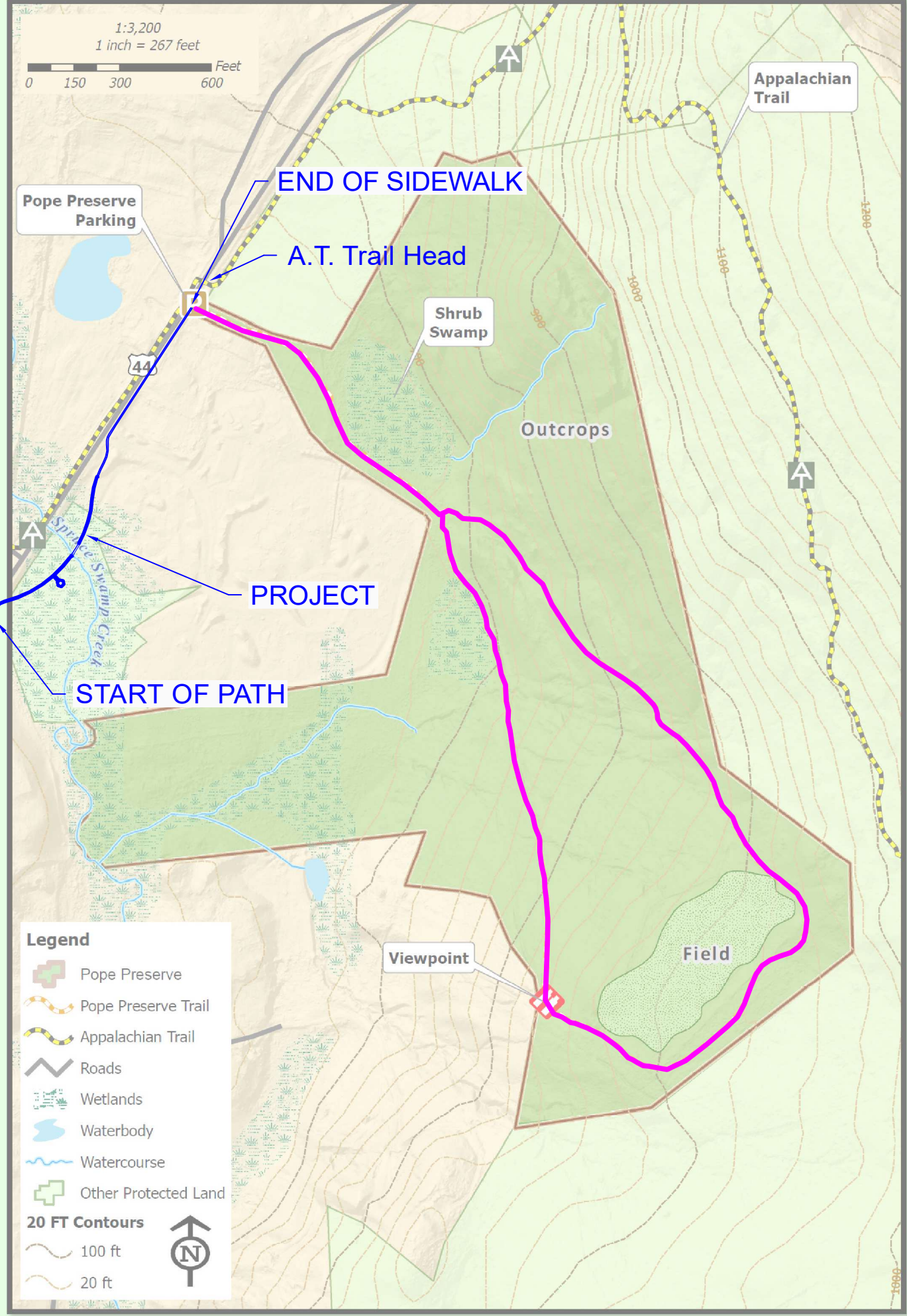
This trail made possible by  
generous donations.

Your support keeps Salisbury  
lands protected.

Please consider donating  
to [salisburyassociation.org](https://salisburyassociation.org)  
860-435-0566




## Pope Preserve



The 79-acre Pope Preserve was acquired by the Salisbury Association Land Trust in 2019. The Pope family generously sold the land at an attractive price so that the land would be preserved. The purchase was financed through grants from the State of Connecticut Open Space and Watershed Land Acquisition program, Anne and Rollin Bates Foundation, Appalachian Trail Conservancy's Wild East Program, and the John T. and Jane A. Wiederhold Foundation. A much-appreciated bridge loan was provided by the Norcross Wildlife Foundation.

The preserve is situated on the western reach of Wetauwanchu Mountain (elevation 1250'), and is bordered on three sides by the Appalachian Trail corridor, providing a valuable buffer of protected land along the trail. Forest, field, swamp, stream and marshland environments are all present. A 1.3 mile loop trail follows an old wood road to the top of Bittersweet Hill, which affords an exceptional view of Bunker Hill to the west. The trail then skirts around the upper edge of a 4.5 acre field before descending through a mixed coniferous-deciduous forest to return to the wood road.

The entrance to the preserve is located on the east side of Canaan Road (Route 44), approximately 0.2 miles north of Cobble Road. Parking is along the shoulder of the road adjacent to the Appalachian Trail head.

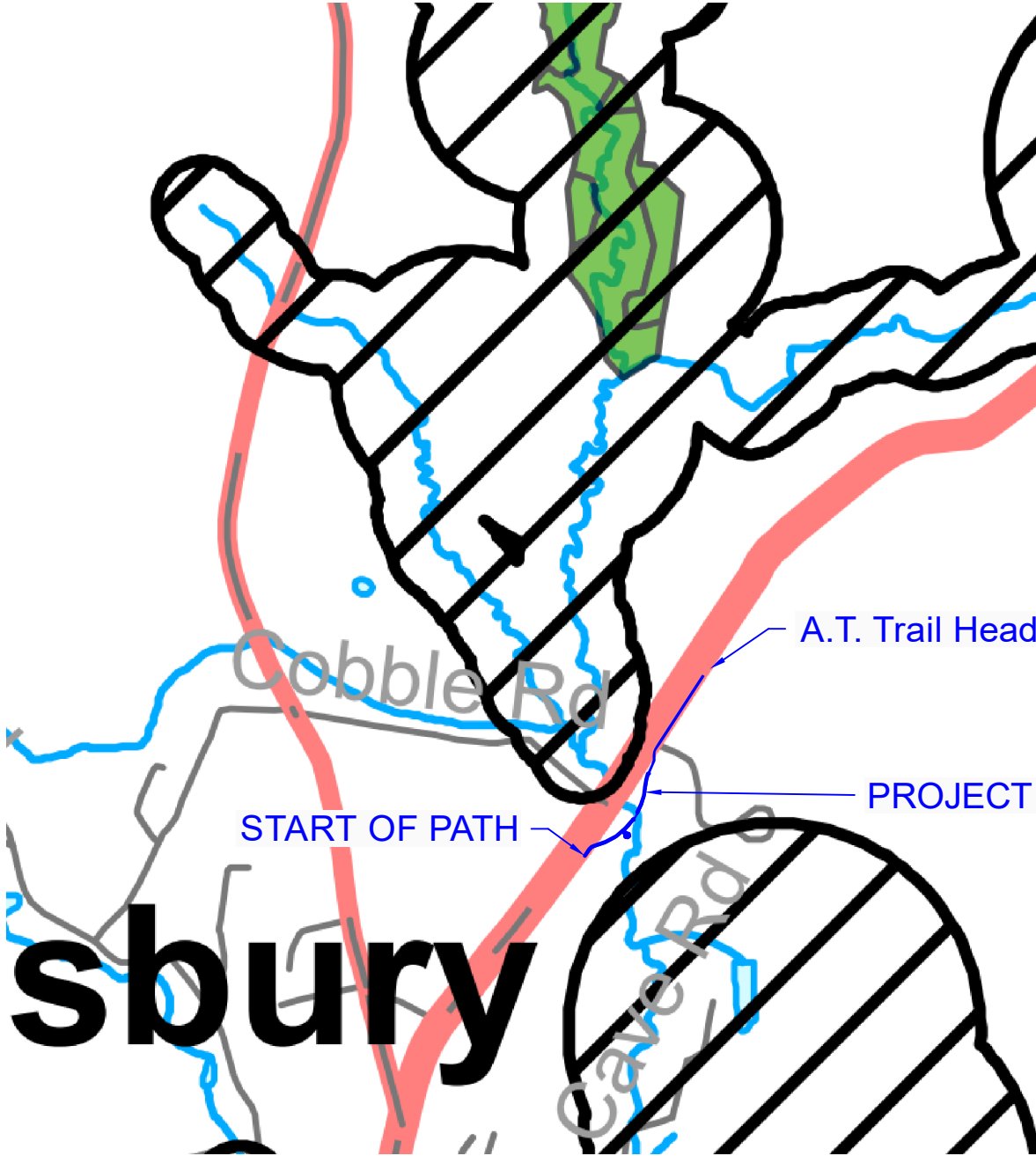


Salisbury Association  
**Land Trust**  
Conserving Our Land.

## Salisbury Association Land Trust Map Pope Preserve Trail

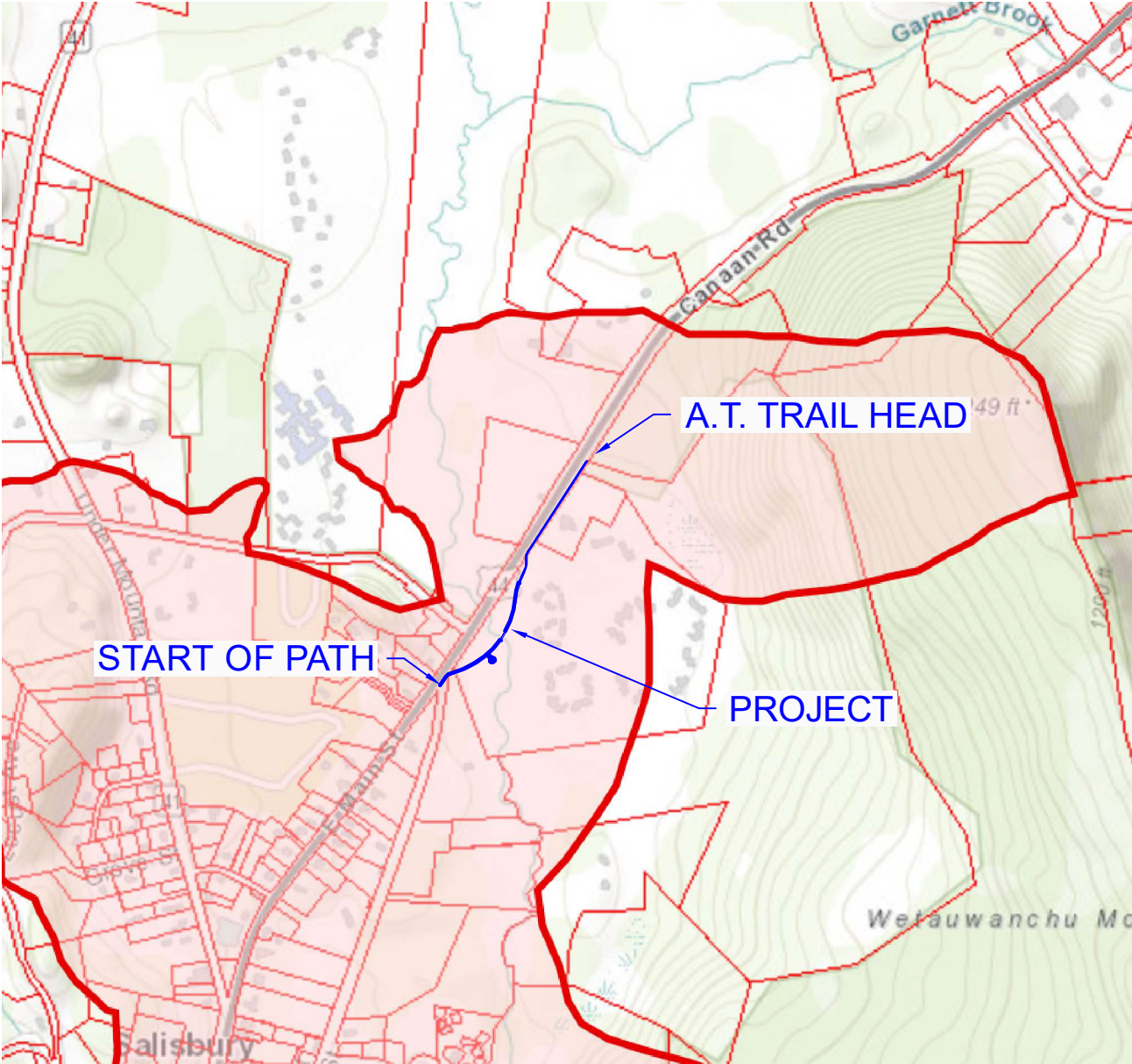
### Trail Purpose

Current access from the A.T. trail head on RT44 must walk along RT44 to reach to trail head to Lion's Head. All pedestrian traffic in both directions must traverse a highway bridge with no shoulders. The trail would provide safe access for hikers and local residents.



NDDb December 2023

SCALE: 1" = 1000'

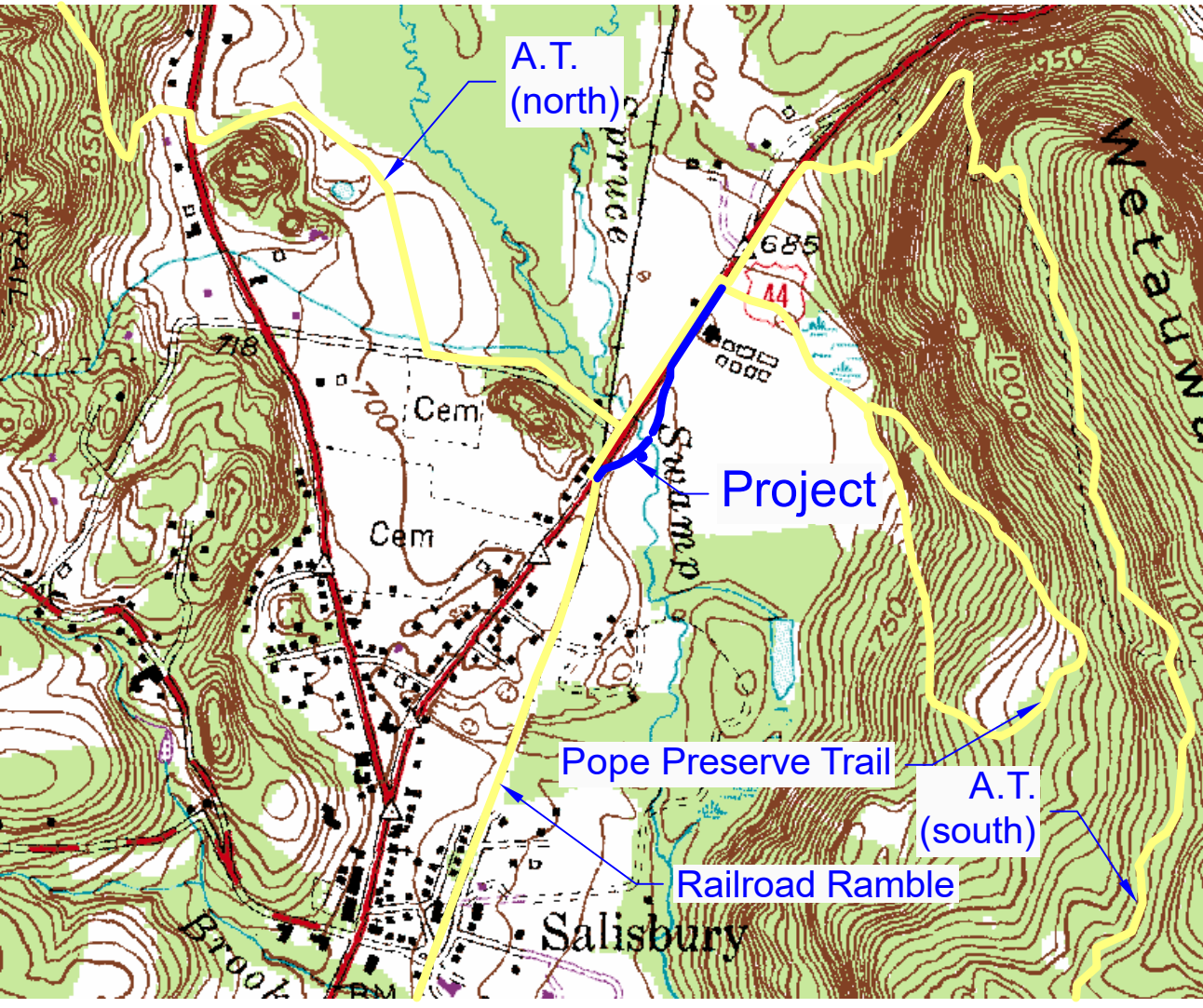


A.T. TRAIL HEAD

START OF PATH

PROJECT

SCALE: 1" = 1/8th Mile = 660'



A.T. (north)

Project

Pope Preserve Trail

Railroad Ramble


A.T. (south)


Salisbury

SCALE: 1" = 1000'

Trail Distance:  
2.1 miles

Difficulty:  
Easy

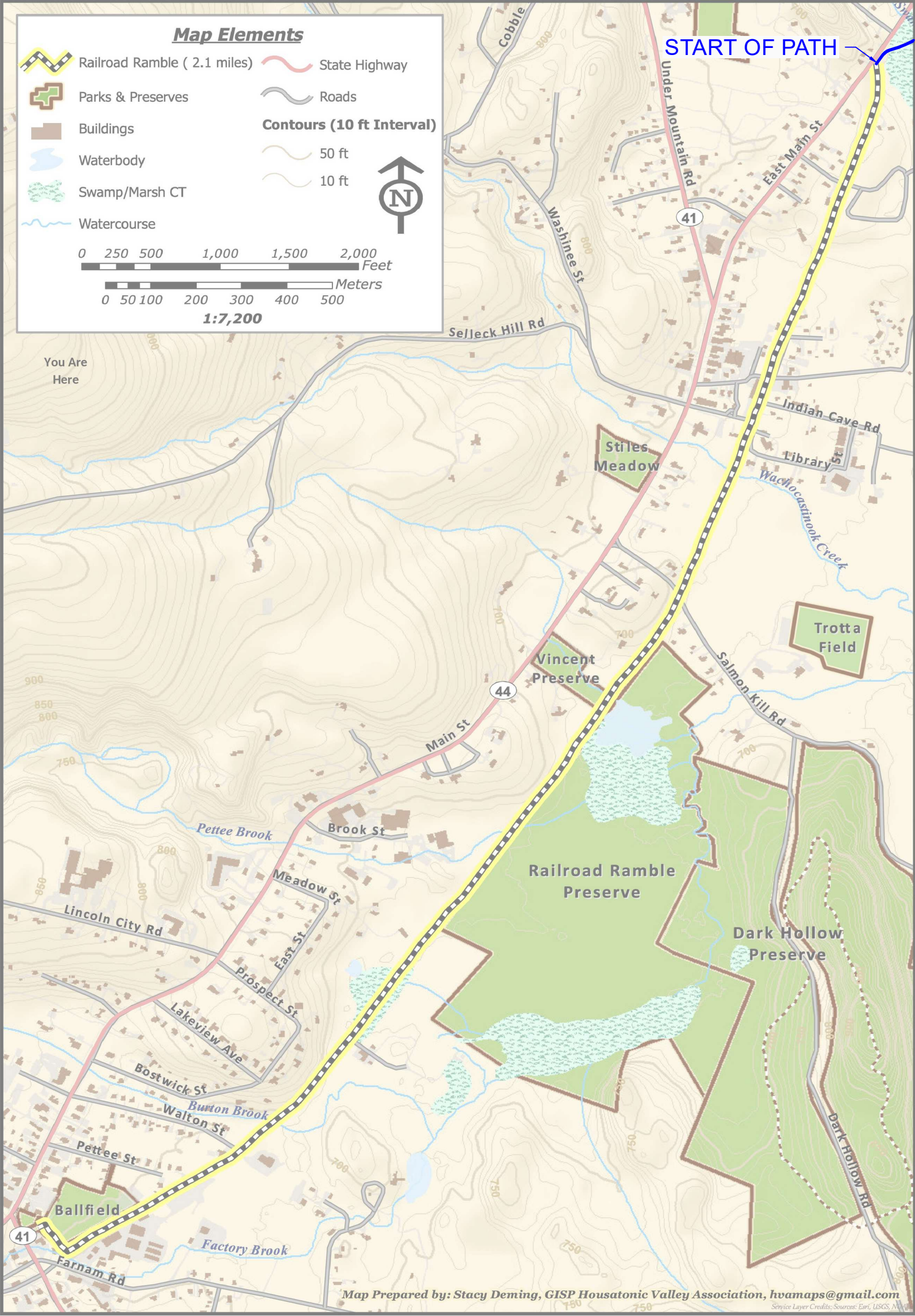




For information about  
Salisbury Association  
Land Trust preserves  
scan QR code

## Railroad Ramble

Salisbury, Connecticut



Map Elements

- Railroad Ramble ( 2.1 miles )
- Parks & Preserves
- Buildings
- Waterbody
- Swamp/Marsh CT
- Watercourse
- State Highway
- Roads
- Contours (10 ft Interval)
- 50 ft
- 10 ft

0 250 500 1,000 1,500 2,000 Feet

0 50 100 200 300 400 500 Meters

1:7,200

You Are Here

START OF PATH


Map Prepared by: Stacy Deming, GISP Housatonic Valley Association, hvamaps@gmail.com

The town owned Railroad Ramble follows the old bed of the Central New England railroad that operated from 1871 to 1938. It initially ran from Hartford to Millerton, NY. Later this route became part of a larger system and for a brief period was the main route from Washington DC to Boston. Freight service from Canaan to Lakeville via this route lasted until 1969.

The 2.1 mile trail now connects the villages of Salisbury and Lakeville. It starts at Route 44 in Salisbury and ends at the town ball field in Lakeville near Route 41. Accessible at multiple points the trail is actively used year around for quiet walking, running, bicycling, snowshoeing and birdwatching.

On the west side, south of Salmon Kill Road, the Salisbury Association Land Trust protects 95 acres of forest, wetlands and a 3 acre pond. At the pond you may see waterfowl and if lucky an otter.

Sign produced by the Salisbury Association Land Trust



Salisbury Association  
**Land Trust**  
Conserving Our Land.

## Salisbury Association Land Trust Map Town Railroad Ramble

### Location Information

The proposed project location is north of the Village of Salisbury. The trail starts where the abandoned railroad line meets Route 44 on the east side of 44 and continue north paralleling RT44 till it reached the trailhead for the Appalachian Trail. The proposed trail consists of 730 feet of sidewalk, 560 feet of elevated section and a 50 foot bridge.

Salisbury  
Pathways  
Committee

Date: MARCH 3, 2024

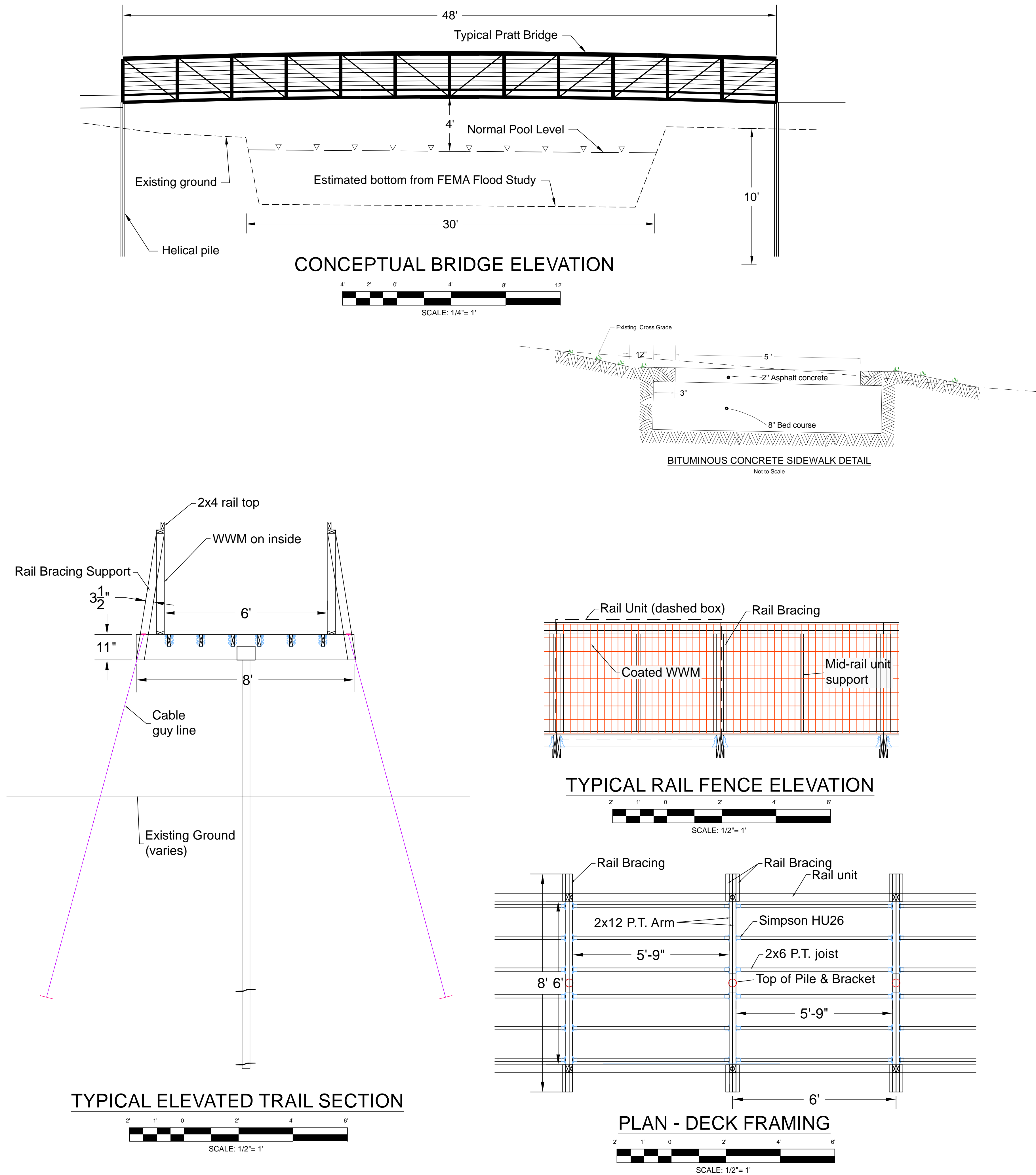
Revisions:

SALISBURY TRAILS CONNECTOR  
EAST MAIN STREET & CANAAN ROAD  
SALISBURY, CONNECTICUT  
SUPPLEMENTAL INFORMATION

Project  
Location  
Info

Sheet 2  
of  
3

ATTACHMENT C - MAPS



## NOTES

FEMA Flood Line from Flood Insurance Study (FIS) Town of Salisbury, Litchfield County, January 5, 1989  
Federal Emergency Management Agency, Community Number – 090052. The Spruce Swamp Creek has a watershed of roughly 10.4 square miles based on the table found in the FIS. Contours and ortho are from the 2016 State of Connecticut Lidar flight.

### How Project is Implemented

The project consists of three phases - sidewalk, elevated path, and bridge. Access to the sidewalk work will be primarily from the Connecticut DOT ROW. The elevated section is on Lion's Head Condominium property. On the north side of Spruce Swamp Creek, the grade drops 5 feet in 200 and is lawn till roughly half the distance. The 6'-wide elevated path is proposed to be constructed in sections from above. Geotechnical data must be acquired before any rational design can be implemented. The NRCS Web Soil Survey shows the soils as generally none-boulder sized soils conducive to the use of helical piles. There is currently no information as to the depth of overburden present or the soil density. Both characteristics is required for selection of the optimal approach. Once the correct pile is selected for actual conditions, the spacing and sizing will be set. Construction is proposed to take place from above. Using dimensions shown on this plan each 6' x 6' segment weighs 350 pounds with decking.

The side fencing material would be a coated welded wire mesh (WWM) with narrower spacing in the horizontal direction as to the vertical direction. This is planned so there is less chance of getting a foothold on the fencing. Rail fencing will be made in 6' units to allow for easier maintenance and replacement (see dashed box in detail). The Vista Platform off the elevated path (station 2+50) provides a good view of the area.

The bridge is proposed to be 48'-50 feet in length and 6' clear in width. The rails would be such that it would not be conducive to climbing and sitting on. The side material would be similar to the elevated path a coated welded wire mesh (WWM) with narrower spacing in the horizontal direction as to the vertical direction.

Earth anchor cables use a frictional guy strand tensioner device that will allow easy post tensioning. A metal clip will be used to keep the end in place between the 2 - 2x12 cantilevered beams.