

## PACHTER BARN

LONG POND ROAD  
SHARON, CT 06069

design team

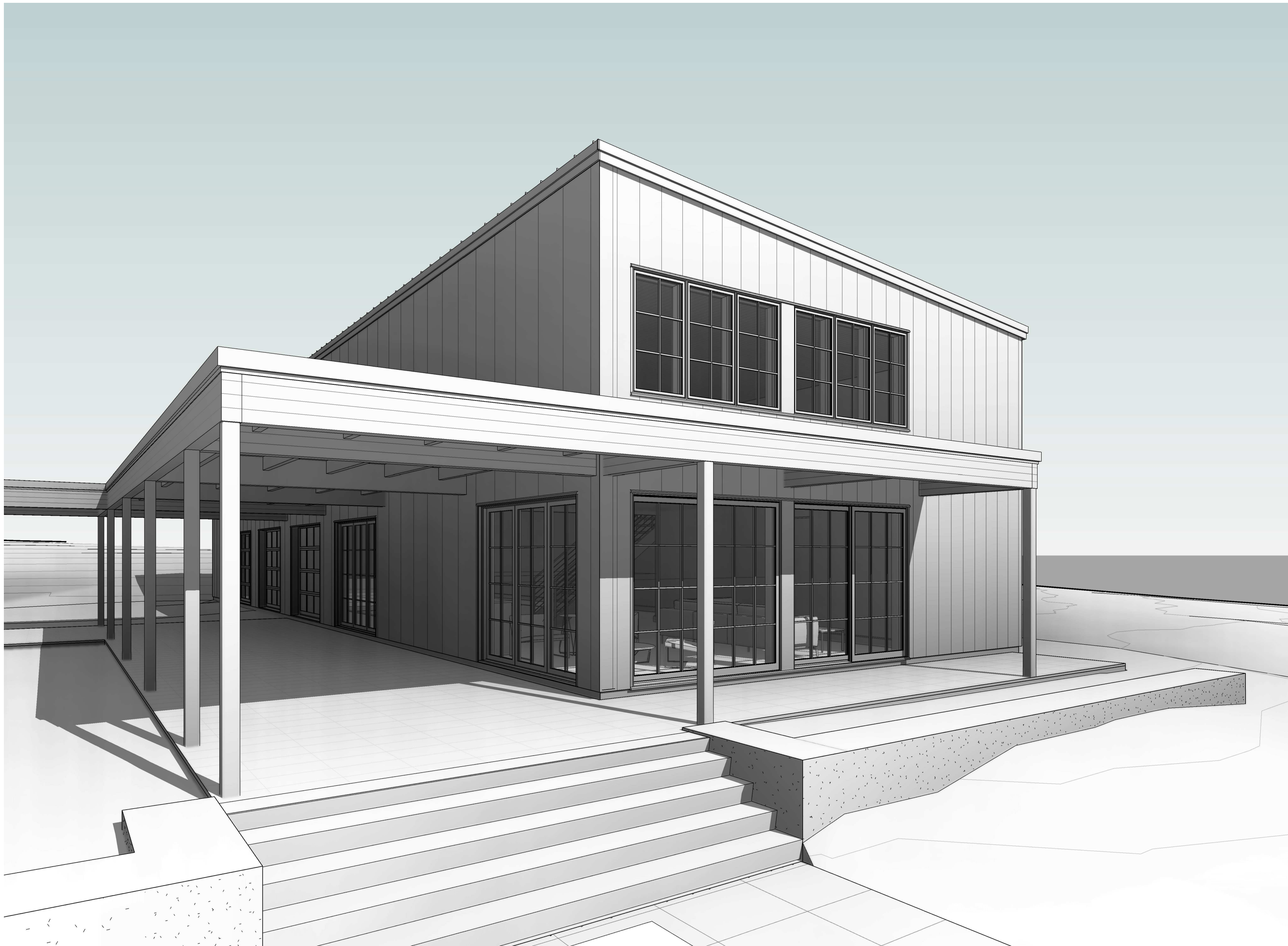
Allee Architecture + Design  
PO Box 1626 Lakeville, CT 06039  
alleedesign.com  
T 860.435.0640

structural engineer

DeStefano & Chamberlain Inc.  
50 Thorpe St.  
Fairfield, CT 06824  
dcstructural.com  
T 203.254.7131

## civil engineer

Jason Dismukes LLC  
241 Torrington Road  
Goshen, CT 06756  
dismukesengineering.com  
T 860.491.3456



## revisions

| rev # | remarks | date |
|-------|---------|------|
|-------|---------|------|

[illegible]

THIS DRAWING IS AN INSTRUMENT OF PROFESSIONAL SERVICE AND SHALL REMAIN THE PROPERTY OF ALLEE ARCHITECTURE-DESIGN. WHETHER THE PROJECT FOR WHICH IT IS PREPARED IS EXECUTED OR NOT. NO CHANGES, ADDITIONS, OR DELETIONS MAY BE MADE EXCEPT BY AA+D. THIS DRAWING SHALL NOT BE REPRODUCED BY ANYONE FOR OTHER PROJECTS, FOR ADDITIONS TO THIS PROJECT, OR FOR COMPLETION OF THIS PROJECT BY OTHERS WITHOUT WRITTEN CONSENT.

© COPYRIGHT 2021  
LEE ARCHITECTURE

NOT FOR CONSTRUCTION

drawing title

COVER

G101

project number  
21-009

date

05/22/23

scale

12" = 1'-0"

| Sheet List   |   |                  |                  |                              |
|--------------|---|------------------|------------------|------------------------------|
| Sheet Number | Sheet Name  | Sheet Issue Date | Current Revision | Current Revision Description |
| G101         | COVER   | 05/22/23         |                  |                              |
| G102         | NOTES / SPECIFICATIONS                              | 05/22/23         |                  |                              |
| G103         | ABBREVIATIONS + SYMBOLS                             | 05/22/23         |                  |                              |
| A101         | FIRST FLOOR PLAN                                    | 05/22/23         |                  |                              |
| A102         | UPPER LEVEL PLAN                                    | 05/22/23         |                  |                              |
| A103         | ROOF PLAN   | 05/22/23         |                  |                              |
| A201         | EXTERIOR ELEVATIONS - SOUTH + WEST                  | 05/22/23         |                  |                              |
| A202         | EXTERIOR ELEVATIONS - NORTH + EAST                  | 05/22/23         |                  |                              |
| A301         | BUILDING SECTIONS                                   | 05/22/23         |                  |                              |
| A401         | INTERIOR ELEVATIONS                                 | 05/22/23         |                  |                              |
| A402         | INTERIOR ELEVATIONS - HANGOUT, SHOWER, VEST, POWDER | 05/22/23         |                  |                              |
| A601         | SCHEDULES   | 05/22/23         |                  |                              |





---

2. **Dis:**

---

De-facto & De-jure state

civil engineer

Jeppia Diemulkee II

---

---

|        |                           |       |                                |       |  |
|--------|---------------------------|-------|--------------------------------|-------|--|
|        | ANCHOR BOLT               | D     | DRAIN                          | GLF   | GLASS FIBER                              |
| ABV    | ABOVE                     | DP    | DOUBLECLACTING                 | GP    | GALVANIZED PIPE                          |
| AC     | ACOUSTICAL                | DEM   | DEMOLISH, DEMOLITION           | GPL   | GYPNUM LATH                              |
| ACC    | AIR CONDITIONING          | DEP   | DEPRESSED                      | GPPL  | GYPNUM PLASTER                           |
| ACC    | ACCESS                    | DET   | DETAIL                         | GPT   | GYPNUM TILE                              |
| ACFL   | ACCESS FLOOR              | DF    | DRINKING FOUNTAIN              | GRD   | GRADE, GRADING                           |
| AWP    | ACOUSTICAL WALL PANEL     | DH    | DOUBLE HUNG                    | GRPG  | GLASS REINFORCED                         |
| ACP    | ACOUSTICAL CEILING PANEL  | DIAG  | DIAGONAL                       | GRN   | POLYMERIZED GYPNUM                       |
| ACPL   | ACOUSTICAL PLASTER        | DIAM  | DIAMETER                       | GSS   | GRANITE                                  |
| ACR    | ACRYLIC PLASTER           | DM    | DIMENSION                      | GST   | GALVANIZED SHEET STEEL                   |
| ACT    | ACOUSTICAL TILE           | DIV   | DIVISION                       | GST   | GLAZED STRUCTURAL TILE                   |
| AD     | AREA DRAIN                | DL    | DEAD LOAD                      | GT    | GROUT                                    |
| ADD    | ADDENDUM                  | DMT   | DEMOUNTABLE                    | GVL   | GRAVEL                                   |
| ADH    | ADHESIVE                  | DMPR  | DAMPER                         | GWB   | GYPNUM WALLBOARD                         |
| ADJ    | ADJUSTABLE                | DN    | DOWN                           | GYP   | GYPNUM                                   |
| ADJT   | ADJACENT                  | DP    | DAMPROOFING                    |       |  |
| AFF    | ABOVE FINISHED FLOOR      | DPL   | DISPOSAL                       | HB    | HOSE BIB                                 |
| AGG    | AGGREGATE                 | DPR   | DISPENSER                      | HBD   | HARBORBOARD                              |
| AHU    | AIR HANDLING UNIT         | DR    | DOOR                           | HCB   | HOLLOW CORE                              |
| ALT    | ALTER                     | DRB   | DRAINBOARD                     | HCC   | HANDICAPPED()                            |
| ALUM   | ALUMINUM                  | DS    | DOWNSPOUT                      | HD    | HEAVY DUTY                               |
| ANC    | ANCHORAGE                 | DT    | DRAIN TILE                     | HNDR  | HARDENER                                 |
| ANOD   | ANODIZED                  | DTA   | DOVETAIL ANCHOR                | HDR   | HEADER                                   |
|        | ACCESS PANEL              | DTS   | DOVETAIL ANCHOR SLOT           | HDRW  | HARDWARE                                 |
| APPROX | APPROXIMATE               | DW    | DISHWASHER                     | HES   | HIGH EARLY STRENGTH                      |
| APT    | APARTMENT                 | DWG   | DRAWING                        |       | CEMENT                                   |
| ARCH   | ARCHITECTURAL (ARCHITECT) | DWR   | DRAWER                         | HH    | HANDHOLE                                 |
| ASB    | ASBESTOS                  | DWTR  | DUMBWATER                      | HJT   | HEADJOINT                                |
| ASC    | ABOVE SUSPENDED CEILING   | E     | EAST                           | HK(S) | HOOK(S)                                  |
| ASPH   | ASPHALT                   | EACH  | EACH                           | HM    | HOLLOW METAL                             |
| AT     | ASPHALT TILE              | EB    | EXPANSION BOLT                 | HORZ  | HORIZONTAL                               |
| AUTO   | AUTOMATIC                 | EF    | EXHAUST FAN                    | HPT   | HIGH POINT                               |
| AV     | AUDIO VISUAL              | EJT   | EXPANSION JOINT                | HR    | HOUR                                     |
|        |                           | EL    | ELEVATOR                       | HT    | HEIGHT                                   |
|        |                           | ELEC  | ELECTRIC (AL)                  | HTG   | HEATING                                  |
| BBB    | BULLETIN BOARD            | ELEV  | ELEVATOR                       | HVAC  | HEATING, VENTILATION, & AIR CONDITIONING |
| BBR    | BASEBOARD RADIATION       | EMER  | EMERGENCY                      |       |  |
| BD     | BOARD                     | ENCL  | ENCLOSURE                      | HWH   | HOT WATER HEATER                         |
| BEL    | BELOW                     | EPBD  | ELECTRIC PANELBOARD            | HWD   | HARDWOOD                                 |
| BIT    | BITUMINOUS                | EPLS  | EXTERIOR PAINT SYSTEM          | HX    | HEXAGONAL                                |
| BJT    | BED JOINT                 | EQ    | EQUAL                          | ID    | INSIDE DIAMETER                          |
| BLDG   | BUILDINGS                 | EQPT  | EQUIPMENT                      | ILK   | INTERLOCK                                |
| BLK(G) | BLOCKING()                | ESCL  | ESCALATOR                      | INCN  | INCINERATOR                              |
| BM     | BEAM                      | ESTIM | ESTIMATE                       | INCL  | INCLUDE(D), INCLUDING                    |
| BMK    | BENCH MARK                | ETR   | EXISTING TO REMAIN             | INS   | INSULATE, INSULATION                     |
| BO     | BY OWNER                  | EXCA  | EXCAVATE                       | INSC  | INSULATING CONCRETE                      |
| BOT    | BOTTOM                    | EXG   | EXISTING                       | INSF  | INSULATING FILL                          |
| BP     | BACK PLASTERED            | EXH   | EXHAUST                        | INT   | INTERIOR                                 |
| BPL    | BEARING PLATE             | EXMP  | EXPANDED METAL PLATE           | INTM  | INTERMEDIATE                             |
| BRG    | BEARING                   | EXP   | EXPOSED                        | INV   | INVERT                                   |
| BRZ    | BRONZE                    | EXS   | EXTRA STRONG                   | IPS   | INTERIOR PAINT SYSTEM                    |
| BS     | BOTH SIDES                | EXT   | EXTERIOR                       |       |  |
| BSMT   | BASEMENT                  | EWC   | ELECTRIC WATER COOLER          | JC    | JANITOR'S CLOSET                         |
| BTWN   | BETWEEN                   |       |                                | JF    | JOINT FILLER                             |
| BUR    | BUILT UP ROOF             | FA    | FIRE ALARM                     | JST   | JOIST                                    |
| BVL    | BEVELED                   | FAI   | FRESH AIR INTAKE               | JT    | JOINT                                    |
| BW     | BOTH WAYS                 | FAS   | FASTENER                       |       |  |
|        |                           | FBD   | FIBERBOARD                     | KIT   | KITCHEN                                  |
| CAB    | CABINET                   | FBD   | FURNISHED BY OTHERS            | KO    | KNOCKOUT                                 |
| CAD    | CADNET                    | FBD   | FLOOR DRAIN                    | KPL   | KICKPLATE                                |
| CB     | CATCH BASIN               | FE-1  | FIRE EXTINGUISHER-TYPE         |       |  |
| CBM    | CEMENT                    | FEC-1 | FIRE EXTINGUISHER CABINET-TYPE | L     | LENGTH                                   |
| CFL    | COUNTERFLASHING           |       | TYPE OF FIRE EXTINGUISHER      | LAB   | LABORATORY                               |
| CF     | CUBIC FOOT                | FF    | FACTORY FINISH                 | LAD   | LADDER                                   |
| CG     | CORNER GUARD              | FFE   | FINISHED FLOOR ELEVATION       | LAM   | LAMINATE (D)                             |
| CHAM   | CHAMFER                   | FFL   | FINISHED FLOOR LINE            | LAV   | LAVATORY                                 |
| CHBD   | CHALKBOARD                | FG    | FIXED GLASS                    | LB    | LAG BOLT                                 |
| CHI    | CEILING HEIGHT            | FGL   | FIBERGLASS                     | LBL   | LABEL                                    |
| CI     | CAST IRON                 | FHS   | FIRE HOSE STATION              | LC    | LIGHT CONTROL                            |
| CIPC   | CAST-IN-PLACE CONCRETE    | FHMS  | FLATHEAD MACHINE SCREW         | LF    | LINEAR FOOT                              |
| CIR    | CIRCLE                    | FHWS  | FLATHEAD WOOD SCREW            | LH    | LEFT HAND                                |
| CIRC   | CIRCUMFERENCE             | FIN   | FINISH (ED)                    | LL    | LIVE LOAD                                |
| CJT    | CONTROL JOINT             | FIXT  | FIXTURE                        | LPT   | LOW POINT                                |
| CL     | CENTERLINE                | FJT   | FLUSH JOINT                    | LT    | LIGHT                                    |
| CLG    | CEILING                   | FLO   | FLOOR CLEANOUT                 | LTL   | LINTEL                                   |
| CLK(G) | CAULKING()                | FLG   | FLASHING                       | LVR   | LOWWER                                   |
| CLL    | CONTRACT LIMIT LINE       | FLR   | FLOOR                          | LW    | LIGHT WEIGHT                             |
| CLR    | CLEAR                     | FLUR  | FLUORESCENT                    | LWC   | LIGHT WEIGHT CONCRETE                    |
| CLS    | CLOSURE                   | FLX   | FLEXIBLE                       | LWF   | LIGHT WEIGHT FILL                        |
| CMT    | CERAMIC MOSAIC TILE       | FN    | FENCE                          | LCC   | LEAD COATED COPPER                       |
| CMU    | CONCRETE MASONRY UNIT     | FNDN  | FOUNDATION                     | LOC   | LOCATION                                 |
| COL    | COLUMN                    | FOC   | FACE OF CONCRETE               |       |  |
| COMB   | COMBINATION               | FOF   | FACE OF FINISH                 | M     | METER(S)                                 |
| COMP   | COMPRESSED(ION)(IBLE)     | FOM   | FACE OF MASONRY                | MAS   | MASONRY                                  |
| COMPO  | COMPOSITE, COMPOSITION    | FOS   | FACE OF STUDS                  | MAX   | MAXIMUM                                  |
| COMP   | COMPARTMENT               | FP    | FIRE PROTECTION                | MB    | MACHINE BOLT                             |
| CONC   | CONCRETE                  | FP(G) | FIREPROOF(ING)                 | MBR   | MEMBER                                   |
| CONST  | CONSTRUCTION              | FPL   | FLOOR PLATE                    | MECH  | MECHANICAL                               |
| CONT.  | CONTINUOUS                | FR    | FRAME(D) (ING)                 | MED   | MEDIUM                                   |
| CONTR  | CONTRACTOR                | FRCC  | FIRE-RESISTANT COATING         | MEP   | MECCHANICAL, ELECTRICAL AND PLUMBING     |
| CORR   | CORRUGATED                | FRG   | FIBERGLAS REINFORCED GYPNUM    |       |  |
| CORR   | CORRIDOR                  | FRPL  | FIBERGLAS REINFORCED PLASTER   | MET   | METAL                                    |
| CPG    | COPING                    | FRP   | FIRE RATED PLYWOOD             | MFD   | METAL FLOOR DECKING                      |
| CPR    | COPPER                    | FRGD  | FORGED                         | MFR   | MANUFACTURER                             |
| CPT    | CARPET                    | FRT   | FIRE RETARDANT TREATED         | MH    | MANHOLE                                  |
| CR     | CHROMIUM PLATED           | FS    | FULL SIZE                      | MI    | MALLEABLE IRON                           |
| CRG    | CROSS GRAIN               | FTG   | FOOTING                        | MIN   | MINIMUM                                  |
| CRS    | COURSE(S)                 | FURR  | FURRED, FURRING                | MIR   | MIRROR                                   |
| CS     | CONCRETSINK               | FUT   | FUTURE                         | MISC  | MISCELLANEOUS                            |
| CSMT   | CASEMENT                  |       |                                | MLDG  | MOLDING, MOULDING                        |
| CST    | CAST STONE                | GA    | GAUGE                          | MM    | MILLIMETER(S)                            |
| CT     | CERAMIC TILE              | GALV  | GALVANIZED                     | MMA   | METAL METAL ACCESSORY                    |
| CTHK   | COATHOOK                  | GB    | GRAB BAR                       | MO    | MASONRY OPENING                          |
| CTR    | COUNTER                   | GC    | GENERAL CONTRACTOR             | MOD   | MODEL                                    |
| CTSK   | COUNTERSUNK SCREW         | GF    | GROUND FACE                    | MODU  | MODULAR                                  |
| CX     | CONNECTION                | GI    | GALVANIZED IRON                | MOV   | MOVABLE                                  |
| CY     | CUBIC YARD                | GKT   | GASKET                         | MR    | MOP RECEPTOR                             |
|        |                           | GL    | GLASS, GLAZING                 | MT(D) | MOUNT(ED)                                |
|        |                           | GLB   | GLASS BLOCK                    | MTHR  | METAL THRESHOLD                          |

|             |                                     |
|-------------|-------------------------------------|
| NAT         | NORTH                               |
| NX          | NATURAL                             |
| NC          | NONCOMBUSTIBLE EXTENSION            |
| NIC         | NICKEL                              |
| NL          | NOT IN CONTRACT                     |
| NLNT        | NONMETALLIC                         |
| NOM         | NOMINAL                             |
| NOR         | NOISE REDUCTION                     |
| NRR         | NOISE REDUCTION COEFFICIENT         |
| NTS         | NOT TO SCALE                        |
| NGVD        | NATIONAL GEOGRAPHICAL VERTICAL DATA |
| OA          | OVERALL                             |
| OS          | OBSCURE                             |
| OC          | ON CENTER                           |
| OD          | OUTSIDE DIAMETER                    |
| OH          | OVERHEAD                            |
| OHMS        | OVALHEAD MACHINE SCREW              |
| OHWS        | OVALHEAD WOOD SCREW                 |
| OJ          | OPEN WELD JOIST(S)                  |
| OP          | OPRAGUE                             |
| OPNG        | OPENING                             |
| OPP         | OPPOSITE                            |
| OPSP        | OPPOSITE SURFACE                    |
| PAR         | PARALLEL                            |
| PB          | PANIC BAR                           |
| PBD         | PARTICLE BOARD                      |
| PC          | PRECAST CONCRETE                    |
| PCF         | POUNDING CUBIC FOOT                 |
| PE          | PORCELAIN ENAMEL                    |
| PERF        | PERFORATE(D)                        |
| PERI        | PERIMETER                           |
| PFB         | PREFABRICATE(D)                     |
| PFN         | PREFINISH                           |
| PL          | PLATE GLASS                         |
| PK          | PARKING                             |
| PL          | PROPERTY LINE                       |
| PLAM        | PLASTIC LAMINATE                    |
| PLAS        | PLASTER                             |
| PLF         | POUNDS PER LINEAR FOOT              |
| PLT         | PLATE                               |
| PLN         | PANEL                               |
| PLY (INT'D) | PAINTED                             |
| POLY        | POLYETHYLENE                        |
| PR          | PAIR                                |
| PRC         | PREFORMED                           |
| PSC         | PRESTRESSED CONCRETE                |
| PSF         | POUNDS PER SQUARE FOOT              |
| PSI         | POUNDS PER SQUARE INCH              |
| PT          | PRESSURE TREATED                    |
| PTC         | POST TENSIONED CONCRETE             |
| PTR         | PAPER TOWEL DISPENSER               |
| PVT         | PARTITION                           |
| PWR         | PAPER-WOUND RECEPTOR                |
| PVC         | POLYVINYL CHLORIDE                  |
| PVING       | PAVING                              |
| PVMT        | PAVEMENT                            |
| PLYD        | PLYWOOD                             |
| QT          | QUARRY TILE                         |
| R           | RISER                               |
| RA          | RETURN AIR                          |
| RAD         | RADIUS                              |
| RAG         | RETURN AIR GRILLE                   |
| RAI         | RETAINER ALARM INDICATOR            |
| RB          | RUBBER BASE                         |
| RBS         | RUBBER STONE                        |
| RBT         | RABBET                              |
| RCPT        | REINFORCED CONCRETE PIPE            |
| REF         | REFERENCE                           |
| RE          | REINFORCE(D), REINFORCING           |
| REG         | REGISTER                            |
| REM         | REMOVE                              |
| REQD        | REQUIRED                            |
| REGA        | REQUIREMENTS                        |
| RES         | RESILIENT                           |
| RET         | RETURN                              |
| RETG        | RETAINING                           |
| REV         | REVISION                            |
| RF          | ROOFING                             |
| RFL         | REFLECTED(IVE)(OR)                  |
| RFH         | ROOF HATCH                          |
| RL          | RIGHT HAND                          |
| RL          | RAILING                             |
| RM          | ROOM                                |
| RAS         | ROD & SHELF                         |
| RO          | ROUGH OPENING                       |
| ROW         | RIGHT OF WAY                        |
| RT          | RUBBER TILE                         |
| RTG         | RATING                              |
| RV          | ROOF VENT                           |
| RVS         | REVERSE SIDE                        |
| RVT         | RIVET                               |
| RWC         | RAINWATER CONDUCTOR                 |
| RWL         | RAINWATER LEADER                    |
| S           | SOUTH                               |
| SAB         | SOUND ATTENUATION BATT              |
| SC          | SCHEDULE                            |
| SCD         | SCHEMATIC                           |
| SCN         | SCREEN                              |


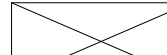
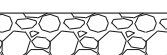

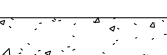


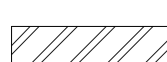

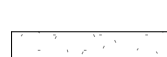
|         |                        |
|---------|------------------------|
| SD      | STRUCTURAL CLAY TILE   |
| SD      | STORM DRAIN            |
| SECT    | SECTION                |
| SE      | SEAL                   |
| SFGL    | SAFETY GLASS           |
| SH      | SHEET GLASS            |
| SG      | SHELF, SHELVING        |
| SHO     | SHORE, SHORING         |
| SH      | SHED                   |
| SHTH    | SHEATHING              |
| SIM     | SIMILAR                |
| SKLT    | SKYLIGHT               |
| SL      | SLEEVE                 |
| SLNT    | SEALANT                |
| SP      | SOUNDPROOF             |
| SPC     | SPACER                 |
| SPEC(S) | SPECIFICATION(S)       |
| SPCL    | SPECIAL                |
| SR      | SPEAKER                |
| SO      | SQUARE                 |
| SSK     | SERVICE SINK           |
| SSLT    | STAINLESS STEEL        |
| STA     | STATION                |
| STD     | STANDARD               |
| STG     | STEAG                  |
| STL     | STEEL                  |
| STOR    | STORAGE                |
| STR     | STRUCTURAL             |
| SUS     | SUSPENDED              |
| SV      | SOLID VINYL TILE       |
| SYM     | SYMMETRICAL            |
| SYN     | SYNTHETIC              |
| SYS     | SYSTEM                 |
| T       | STONE                  |
| T       | TREAD                  |
| TB      | TOWEL BAR              |
| TB      | TOP AND BOTTOM         |
| T       | TERRA COTTA            |
| TEL     | TELEPHONE              |
| TEMP    | TEMPERATURE            |
| THG     | TONGUE AND GROOVE      |
| THK     | THICK(NESS)            |
| THR     | THRESHOLD              |
| TRBD    | TRUCKBOARD             |
| WTS     | TACK TRIP              |
| TMPD    | TEMPERED               |
| T.O.    | TOP OF                 |
| T       | TOP OF CURB            |
| TOL     | TOLERANCE              |
| TO      | TOP OF CONCRETRY       |
| TWL     | TOP OF WALL            |
| T       | TOP OF PLATE           |
| T       | TOP OF STEEL           |
| TPS     | TACK PANEL             |
| TP      | TOP PAPER DISPENSE     |
| TPTN    | TOILET PARTITION       |
| TR      | TRANSOM                |
| TSL     | TOP OF SLAB            |
| T       | TELEVISION             |
| TW      | TOP                    |
| TYP.    | TYPICAL                |
| UC      | UNDERCUT               |
| UGD     | UNDERGROUND            |
| UNF     | UNFINISHED             |
| UR      | UNLESS NOTED OTHERWISE |
| UR      | URINAL                 |
| VAR     | VARNISH                |
| VCT     | VINYL COMPOSITION TILE |
| V       | VAPOR BARRIER          |
| VERT    | VERTICAL               |
| VF      | VINYL FABRIC           |
| VG      | VERTICLE GRAIN         |
| VIF     | VEINED IN FIELD        |
| VJ      | VINYL                  |
| VJ      | V-JOINTED              |
| VNB     | VINYL BASE             |
| VNR     | VENEER                 |
| VRM     | VERMICULITE            |
| VT      | VINYL TILE             |
| W       | VINYL WALL COVERING    |
| W       | WEST                   |
| W       | WITH                   |
| WB      | WHITE BOARD            |
| WC      | WATER CLOSET           |
| W       | WOOD                   |
| WG      | WIRE GLASS             |
| W       | WALL HUNG              |
| WHB     | WHEEL BUMPER           |
| W       | WRIGHT IRON            |
| WIN     | WINDOW                 |
| WM      | WIRE MESH              |
| WO      | WITHOUT                |
| WP      | WATERPROOFING          |
| WP      | WORKING POINT          |
| WR      | WASTE RECEPTACLE       |
| WRP     | WATER REPELLANT        |
| WS      | WATERSTOP              |
| WST     | WAINSCOT               |
| W       | WALL TO WALL           |
| WWF     | WELDED WIRE FABRIC     |
| WWM     | WELDED WIRE MESH       |
| WS      | WEATHER STRIP          |

The image displays a series of architectural drawing symbols and their corresponding labels, organized into two columns. The symbols are as follows:

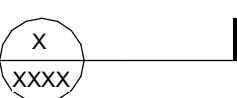
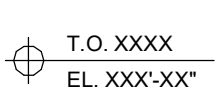
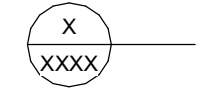

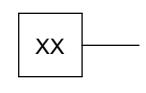

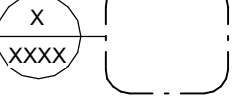
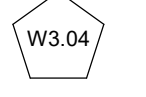

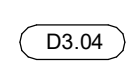
- WOOD (ROUGH):** A rectangle with a diagonal cross (X) inside.
- WOOD (FINISH):** A rectangle with diagonal hatching lines.
- PLYWOOD:** A rectangle with a wavy, zigzag hatching pattern.
- STEEL:** A rectangle with parallel diagonal hatching lines.
- SAND, MORTAR, PLASTER:** A rectangle with a stippled or dotted pattern.
- ELEVATION LINE:** A symbol consisting of a circle with a crosshair inside, followed by the text "T.O. XXXX" and "EL. XXX'XX\" on two lines.
- WALL TYPE:** A square with the letters "XX" inside, followed by a horizontal line pointing to the right.
- WINDOW TYPE:** A pentagon with the text "W3.04" inside.
- DOOR TYPE:** A rounded rectangle with the text "D3.04" inside.

|   |                        |
|---|------------------------|
|  | BATT INSULATION        |
|  | RIGID INSULATION       |
|  | SPRAY FOAM INSULATION  |
|  | GWB                    |
|  | FIELDSTONE (ELEVATION) |
|  | DETAIL REFERENCE       |
|  | COLUMN BUBBLE          |

---

|   |                           |   |                          |
|---|---------------------------|---|--------------------------|
|  | EARTH                     |  | WOOD (ROUGH)             |
|  | POROUS FILL               |  | WOOD (FINISH)            |
|  | CAST-IN-PLACE<br>CONCRETE |  | PLYWOOD                  |
|  | CONCRETE<br>MASONRY UNIT  |  | STEEL                    |
|  | FINISH STONE              |  | SAND, MORTAR,<br>PLASTER |

---

|   |                        |   |                           |                |   |                     |
|---|------------------------|---|---------------------------|----------------|---|---------------------|
|  | BUILDING<br>SECTION    |  | T.O. XXXX<br>EL. XXX'-XX' | ELEVATION LINE |  | DETAIL<br>REFERENCE |
|  | ELEVATION              |  | XX                        | WALL TYPE      |  | COLUMN<br>BUBBLE    |
|  | WALL/DETAIL<br>SECTION |  | W3.04                     | WINDOW TYPE    |   |                     |
|  | REVISION               |  | D3.04                     | DOOR TYPE      |   |                     |

[illegible]

© COPYRIGHT 2003  
ALLEE ARCHITECTURE

---

± SYMBOLS

---

22/22

---

$$= 1'-0'$$

LONG POND ROAD  
SHARON, CT 06069

Allee Architecture + Design  
PO Box 1626 Lakeville, CT 06039  
alleedesign.com  
T 860.435.0640

DeStefano & Chamberlain Inc.  
50 Thorpe St.  
Fairfield, CT 06824  
dcstructural.com  
T 203.254.7131

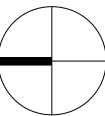
Jason Dismukes LLC  
241 Torrington Road  
Goshen, CT 06756  
dismukesengineering.com  
T 860.491.3456

| rev # | remarks | date |
|-------|---------|------|
|-------|---------|------|

[illegible]

© COPYRIGHT 2022  
EE ARCHITECTURE

scale  
1/4" = 1'-0"



LONG POND ROAD  
SHARON, CT 06069

LONG POND ROAD  
SHARON, CT 06069

Allee Architecture + Design  
PO Box 1626 Lakeville, CT 06039  
alleedesign.com  
T 860.435.0640

DeStefano & Chamberlain Inc.  
50 Thorpe St.  
Fairfield, CT 06824  
dcstructural.com  
T 203.254.7131

Jason Dismukes llc  
241 Torrington Road  
Goshen, CT 06756  
dismukesengineering.com  
T 860.491.3456

THIS DRAWING IS AN INSTRUMENT OF PROFESSIONAL SERVICE AND SHALL REMAIN THE PROPERTY OF ALLEE ARCHITECTURE-DESIGN. WHETHER THE PROJECT FOR WHICH IT IS PREPARED IS EXECUTED OR NOT. NO CHANGES, ADDITIONS, OR DELETIONS MAY BE MADE EXCEPT BY A+D. THIS DRAWING SHALL NOT BE REPRODUCED BY ANYONE FOR OTHER PROJECTS, FOR ADDITIONS TO THIS PROJECT, OR FOR COMPLETION OF THIS PROJECT BY OTHERS WITHOUT WRITTEN CONSENT.

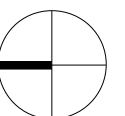
© COPYRIGHT 2022  
ALLEE ARCHITECTURE

drawing title  
UPPER LEVEL PLAN

project number  
21-009

date  
05/22/23

scale  
1/4" = 1'-0"





LONG POND ROAD  
SHARON, CT 06069

structural engineer  
DeStefano & Chamberlain Inc.  
50 Thorpe St.  
Fairfield, CT 06824  
dcstructural.com  
T 203.254.7131

civil engineer  
Jason Dismukes LLC  
241 Torrington Road  
Goshen, CT 06756  
dismukesengineering.com  
T 860.491.3456

[illegible]

THIS DRAWING IS AN INSTRUMENT OF PROFESSIONAL SERVICE AND SHALL REMAIN THE PROPERTY OF ALLEE ARCHITECTURE-DESIGN. WHETHER THE PROJECT FOR WHICH IT IS PREPARED IS EXECUTED OR NOT. NO CHANGES, ADDITIONS, OR DELETIONS MAY BE MADE EXCEPT BY AA+D. THIS DRAWING SHALL NOT BE REPRODUCED BY ANYONE FOR OTHER PROJECTS, FOR ADDITIONS TO THIS PROJECT, OR FOR COMPLETION OF THIS PROJECT BY OTHERS WITHOUT WRITTEN CONSENT.

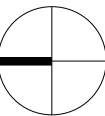
© COPYRIGHT 2021  
THE ARCHITECTURE

drawing title  
ROOF PLAN

project number  
21-009

date  
05/22/23

scale  
1/4" = 1'-0"



# PACHTER BARN

LONG POND ROAD  
SHARON, CT 06069

design team

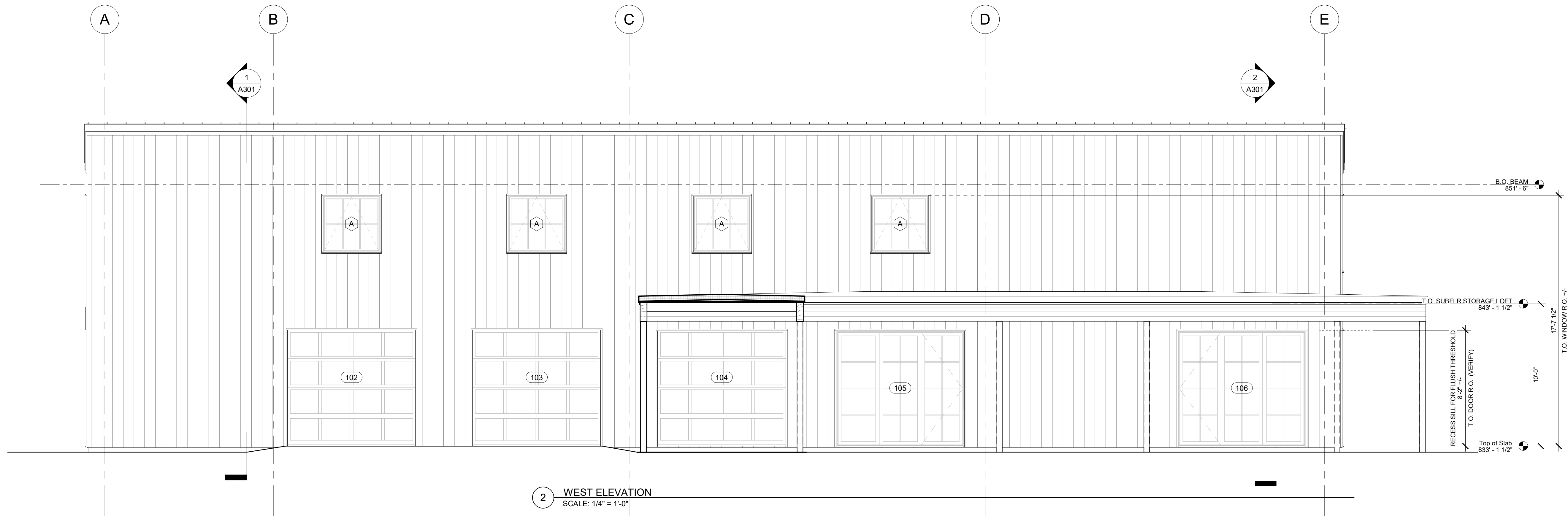
Allee Architecture + Design  
PO Box 1626 Lakeville, CT 06039  
allee@alleedesign.com  
T 860.435.0640

structural engineer

DeStefano & Chamberlain Inc.  
50 Thorpe St.  
Fairfield, CT 06824  
dcstructural.com  
T 203.254.7131

civil engineer

Jason Dismukes llc  
241 Torrington Road  
Goshen, CT 06756  
dismukesengineering.com  
T 860.491.3456



revisions

[illegible]

THIS DRAWING IS AN INSTRUMENT OF PROFESSIONAL SERVICE AND SHALL REMAIN THE PROPERTY OF ALLEE ARCHITECTURE+DESIGN WHETHER THE PROJECT FOR WHICH IT IS PREPARED IS EXECUTED OR NOT. NO CHANGES, ADDITIONS, OR DELETIONS MAY BE MADE EXCEPT BY AA+D. THIS DRAWING SHALL NOT BE REPRODUCED BY ANYONE FOR OTHER PROJECTS, FOR ADDITIONS TO THIS PROJECT, OR FOR COMPLETION OF THIS PROJECT BY OTHERS WITHOUT WRITTEN CONSENT.

© COPYRIGHT 2022  
FREE ARCHITECTURE

NOT FOR CONSTRUCTION

drawing title

EXTERIOR ELEVATIONS - SOUTH +  
WEST

A201

project number  
21-009

date  
05/22/23

scale  
1/4" = 1'-0"

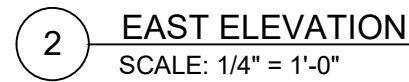


LONG POND ROAD  
SHARON, CT 06069

Allee Architecture + Design  
PO Box 1626 Lakeville, CT 06039  
alleedesign.com  
T 860.435.0640

DeStefano & Chamberlain Inc.  
50 Thorpe St.  
Fairfield, CT 06824  
dcstructural.com  
T 203.254.7131

Jason Dismukes llc  
241 Torrington Road  
Goshen, CT 06756  
dismukesengineering.com  
T 860.491.3456

[illegible]

© COPYRIGHT 2022  
ALLEE ARCHITECTURE

A202

scale  
1/4" = 1'-0"

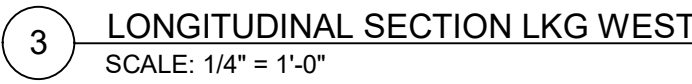


LONG POND ROAD  
SHARON, CT 06069

Allee Architecture + Design  
PO Box 1626 Lakeville, CT 06039  
alleedesign.com  
T 860.435.0640

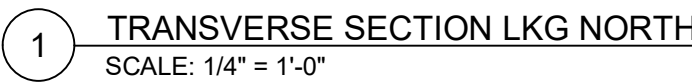
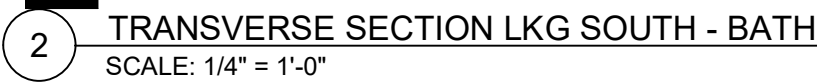
DeStefano & Chamberlain Inc.  
50 Thorpe St.  
Fairfield, CT 06824  
dcstructural.com  
T 203.254.7131

Jason Dismukes llc  
241 Torrington Road  
Goshen, CT 06756  
ismukesengineering.com  
T 860.491.3456

[illegible]

© COPYRIGHT 2022  
FREE ARCHITECTURE

scale  
1/4" = 1'-0"



# PACHTER BARN

LONG POND ROAD  
SHARON, CT 06069

design team

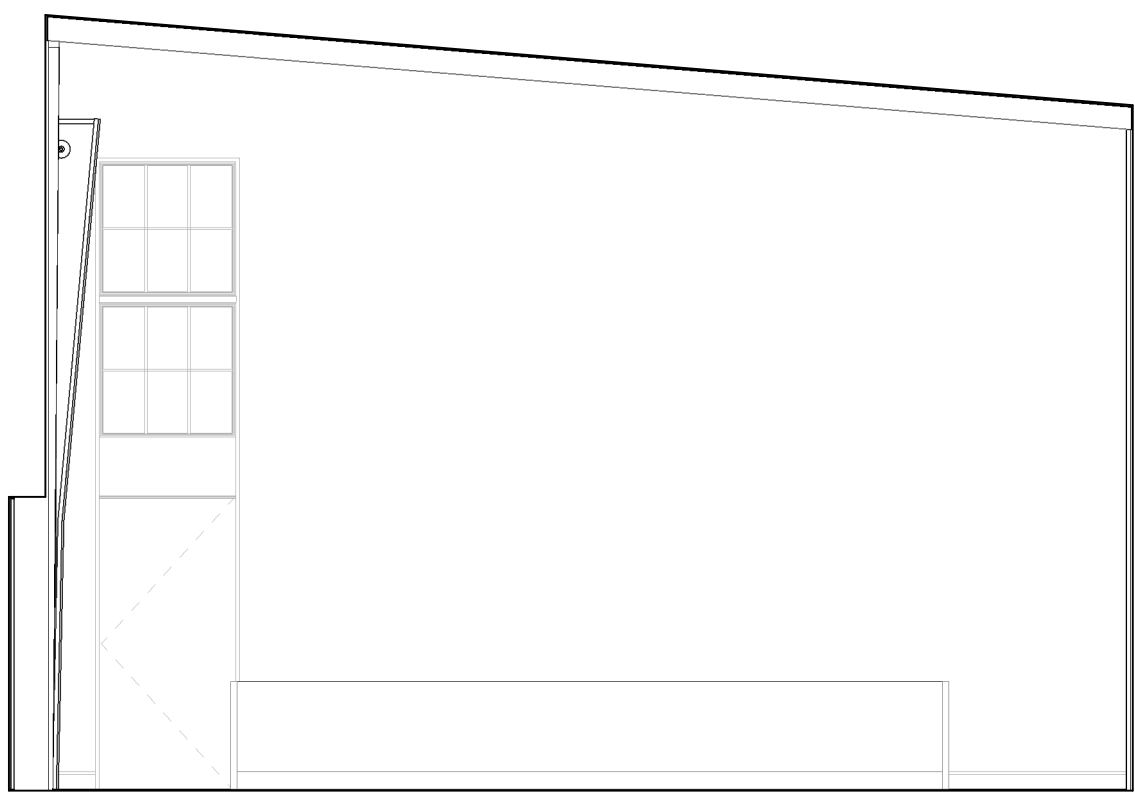
Allee Architecture + Design  
PO Box 1626 Lakeville, CT 06039  
alleedesign.com  
T 860.435.0640

structural engineer

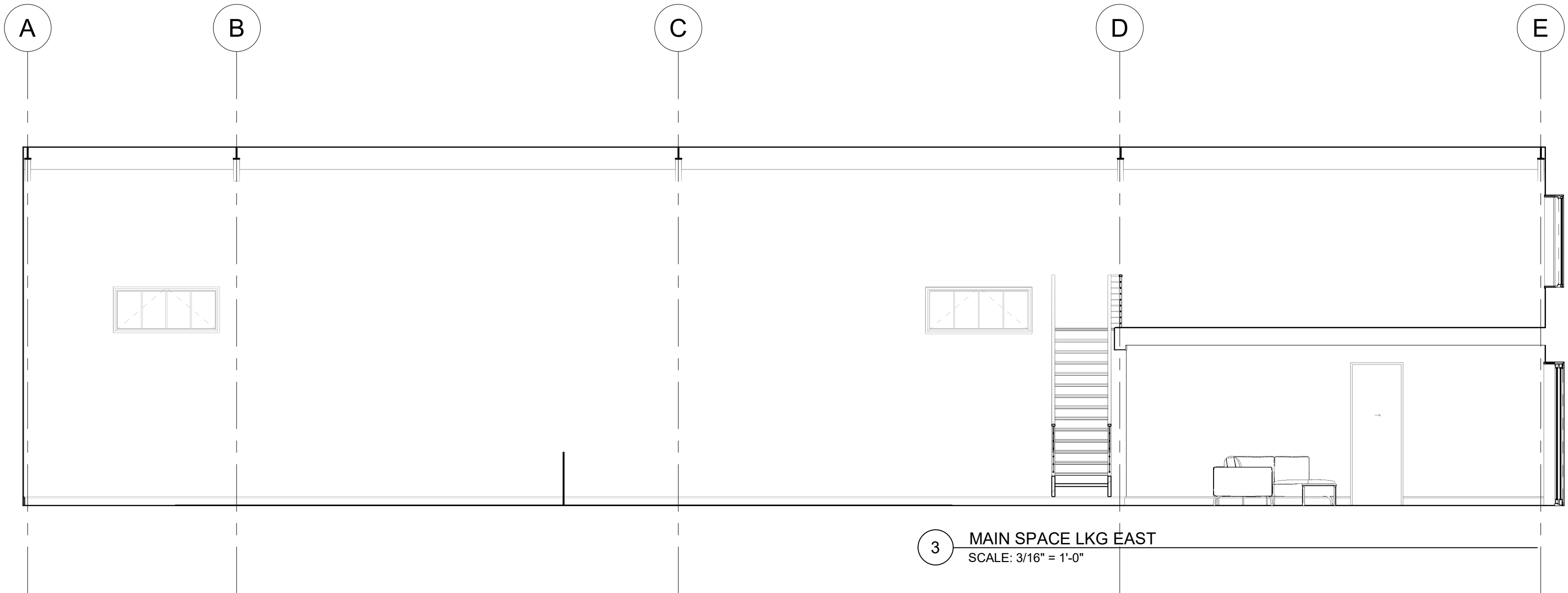
DeStefano & Chamberlain Inc.  
50 Thorpe St.  
Fairfield, CT 06824  
dcstructural.com  
T 203.254.7131

civil engineer

Jason Dismukes LLC  
241 Torrington Road  
Goshen, CT 06756  
dismukesengineering.com  
T 860.491.3456



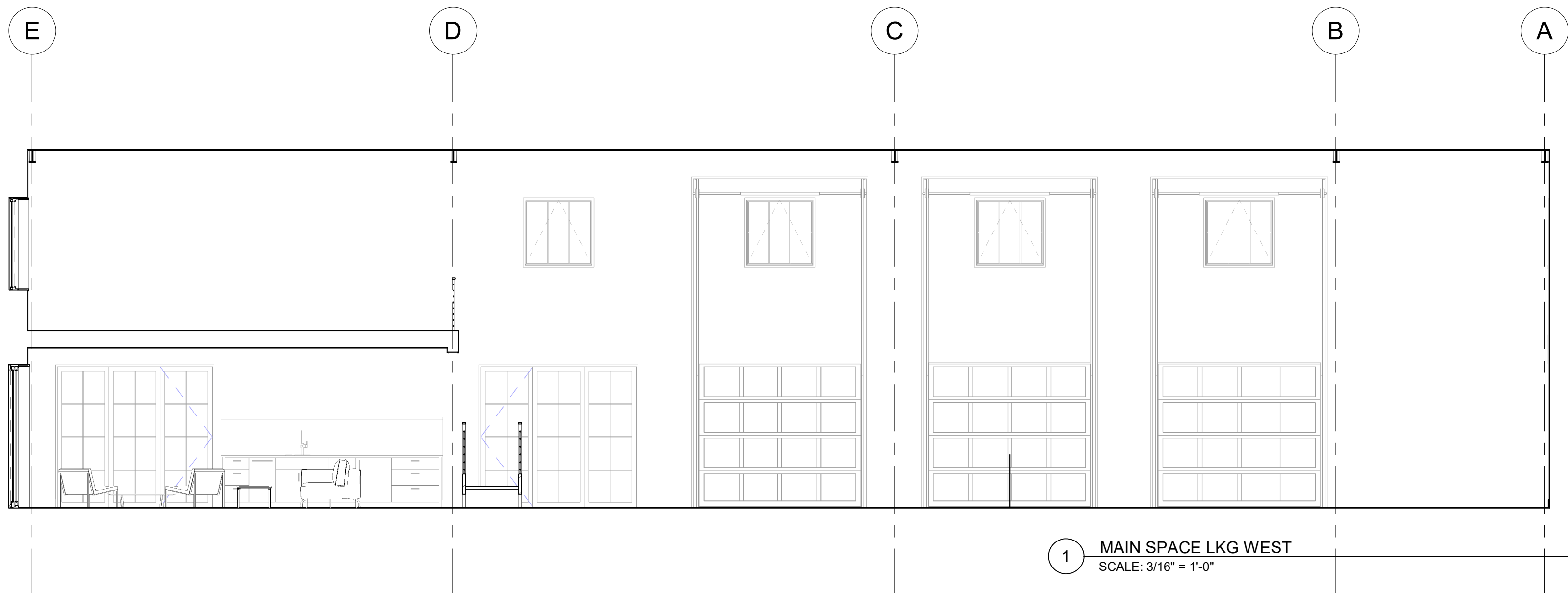
4 MAIN SPACE LKG NORTH  
SCALE: 3/16" = 1'-0"



3 MAIN SPACE LKG EAST  
SCALE: 3/16" = 1'-0"



2 MAIN SPACE LKG SOUTH  
SCALE: 3/16" = 1'-0"



1 MAIN SPACE LKG WEST  
SCALE: 3/16" = 1'-0"

## Revisions

[illegible]

THIS DRAWING IS AN INSTRUMENT OF PROFESSIONAL SERVICE AND  
SHALL REMAIN THE PROPERTY OF ALLEE ARCHITECTURE-DESIGN  
WHETHER THE PROJECT FOR WHICH  
PREPARED IS EXECUTED OR NOT. NO CHANGES, ADDITIONS, OR  
DELETIONS MAY BE MADE EXCEPT BY A-A-0. THIS DRAWING  
SHALL NOT BE REPRODUCED BY ANYONE FOR OTHER PROJECTS, FOR  
ADDITIONS TO THIS PROJECT, OR FOR COMPLETION OF THIS PROJECT  
BY OTHERS WITHOUT WRITTEN CONSENT  
© COPYRIGHT 2022  
ALLEE ARCHITECTURE

NOT FOR CONSTRUCTION

drawing title  
INTERIOR ELEVATIONS

A401

project number  
21-009

date  
05/22/23

scale  
3/16" = 1'-0"

## PACHTER BARN

LONG POND ROAD  
SHARON, CT 06069

design team

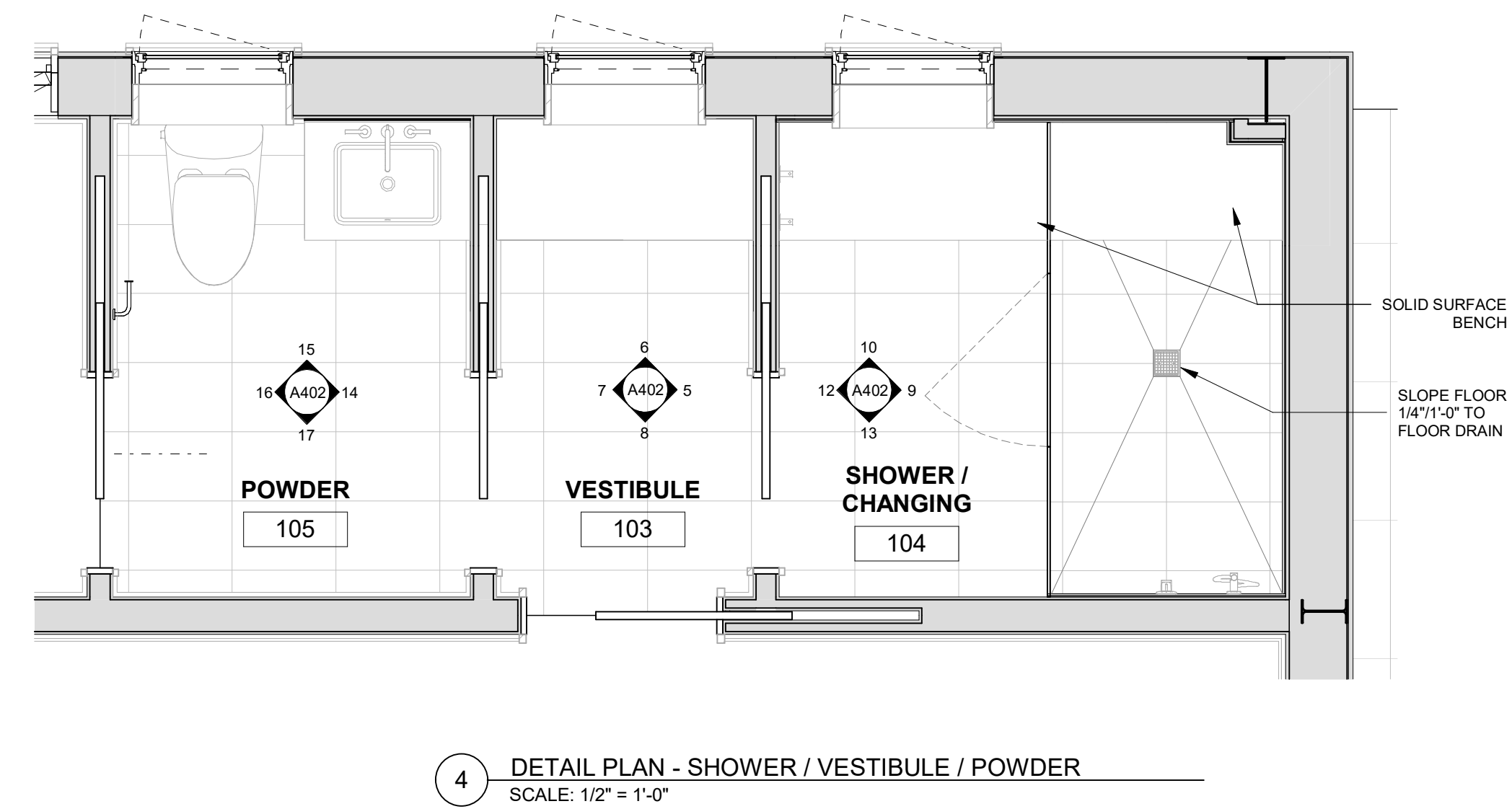
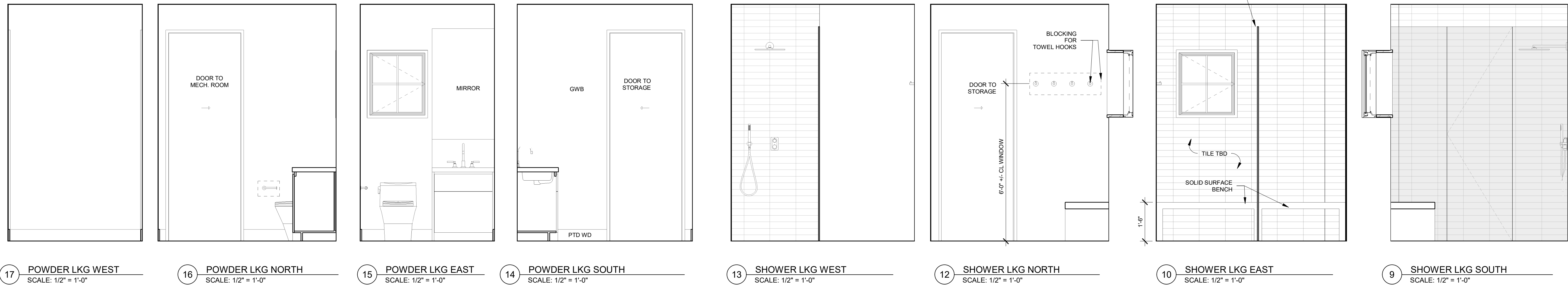
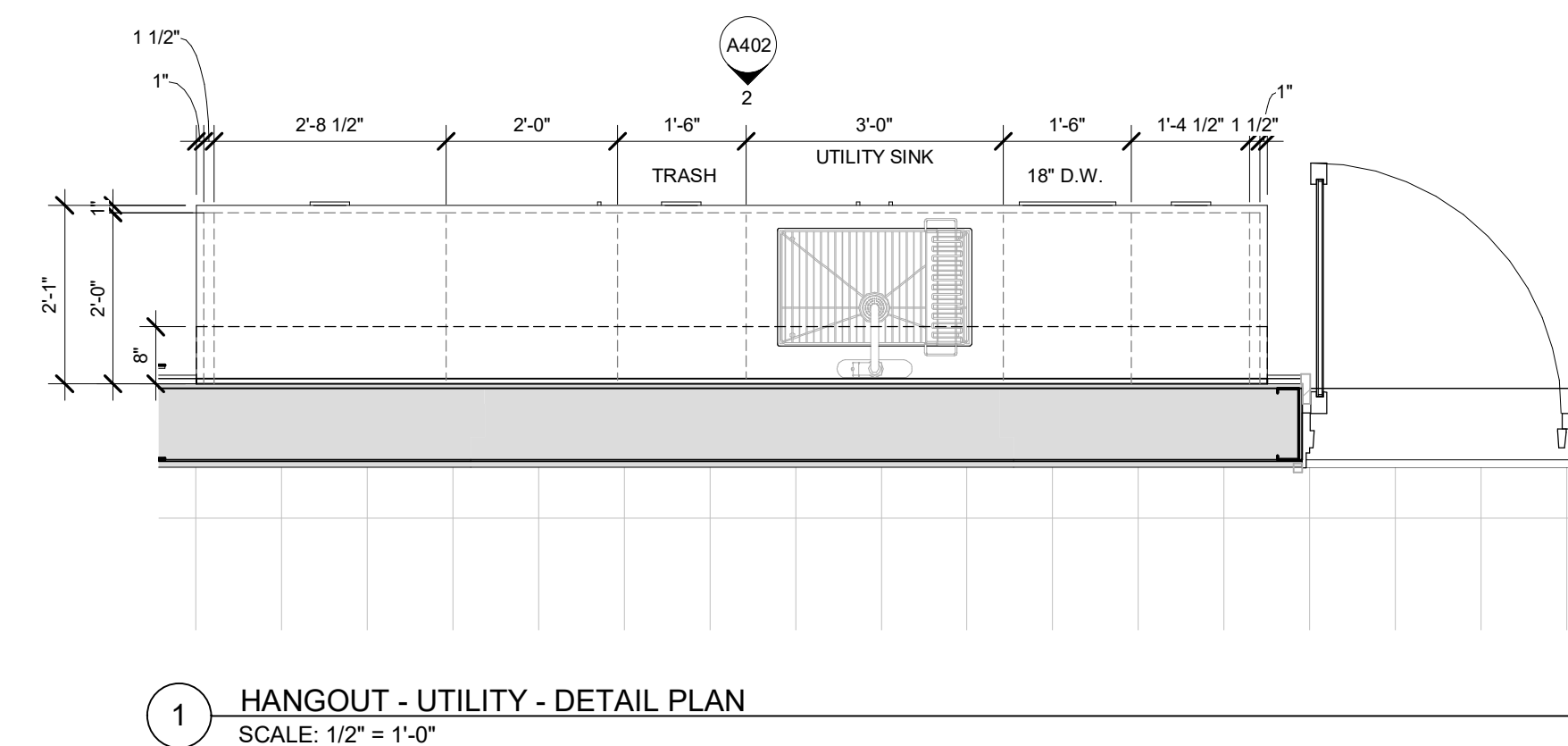
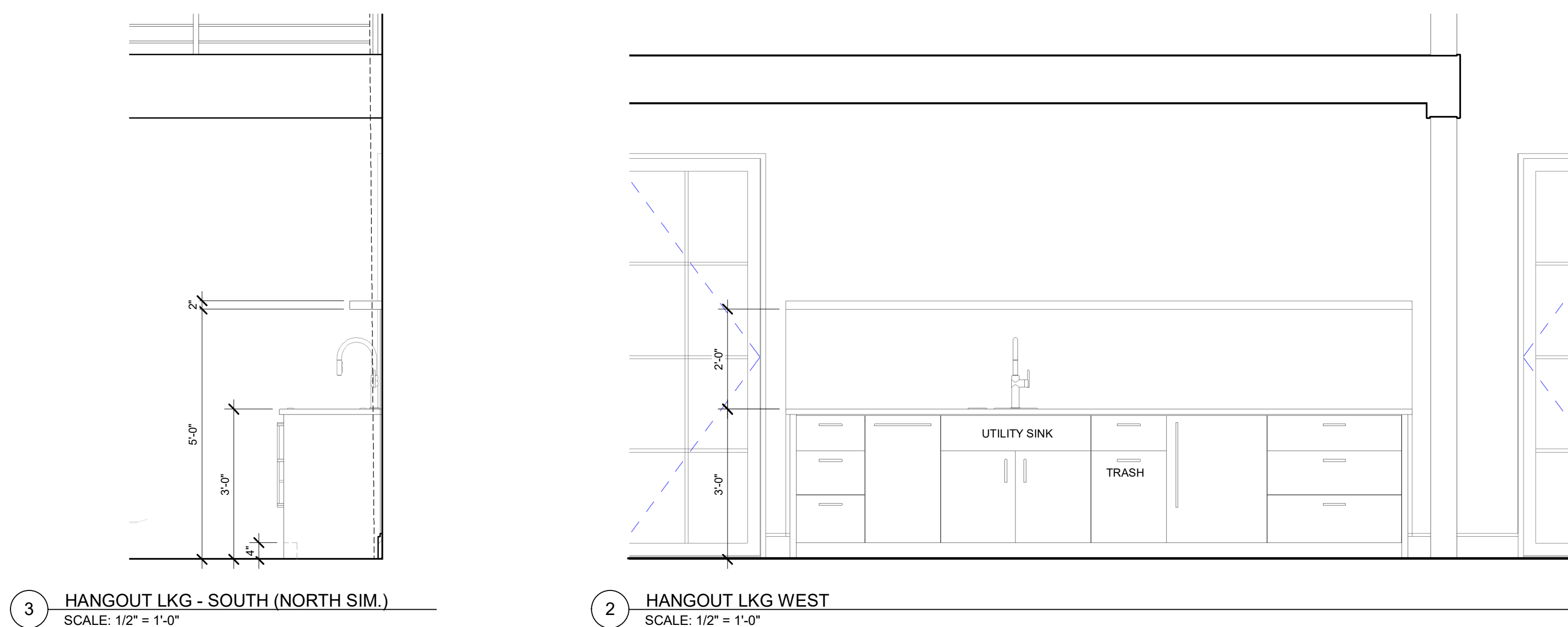
Allee Architecture + Design  
PO Box 1626 Lakeville, CT 06039  
alleedesign.com  
T 860.435.0640

structural engineer

DeStefano & Chamberlain Inc.  
50 Thorpe St.  
Fairfield, CT 06824  
dcstructural.com  
T 203.254.7131

civil engineer

Jason Dismukes llc  
241 Torrington Road  
Goshen, CT 06756  
dismukesengineering.com  
T 860.491.3456

[illegible]

THIS DRAWING IS AN INSTRUMENT OF PROFESSIONAL SERVICE AND SHALL REMAIN THE PROPERTY OF ALLEE ARCHITECTURE-DESIGN. WHETHER THE PROJECT FOR WHICH IT IS PREPARED IS EXECUTED OR NOT. NO CHANGES, ADDITIONS, OR DELETIONS MAY BE MADE EXCEPT BY AA+D. THIS DRAWING SHALL NOT BE REPRODUCED BY ANYONE FOR OTHER PROJECTS, FOR ADDITIONS TO THIS PROJECT, OR FOR COMPLETION OF THIS PROJECT BY OTHERS WITHOUT WRITTEN CONSENT.

© COPYRIGHT 2022  
ALLEE ARCHITECTURE

NOT FOR CONSTRUCTION

drawing title  
INTERIOR ELEVATIONS - HANGOUT,  
SHOWER, VEST., POWDER

A402

project number  
21-009

date  
05/22/23

scale  
1/2" = 1'-0"

