

MEMORANDUM

DATE: August 19, 2025
FROM: Greg Tocci, 508-395-3945, gtocci@cavtocci.com
TO: Steven Cohen, Aradev LLC
 Jonathan Marrale, Aradev LLC
SUBJECT: Tent Events

We understand that Wake Robin Inn is currently permitted to host tented events such as wedding receptions on its property. Figure 1 shows two previous 102' by 45' tent locations (Tents 1 and 2). Based on live band sound measured at the periphery of a similarly sized tent during a wedding reception, potential sound levels at receptor locations R1-R9 have been determined and are reported in Table 1 below.

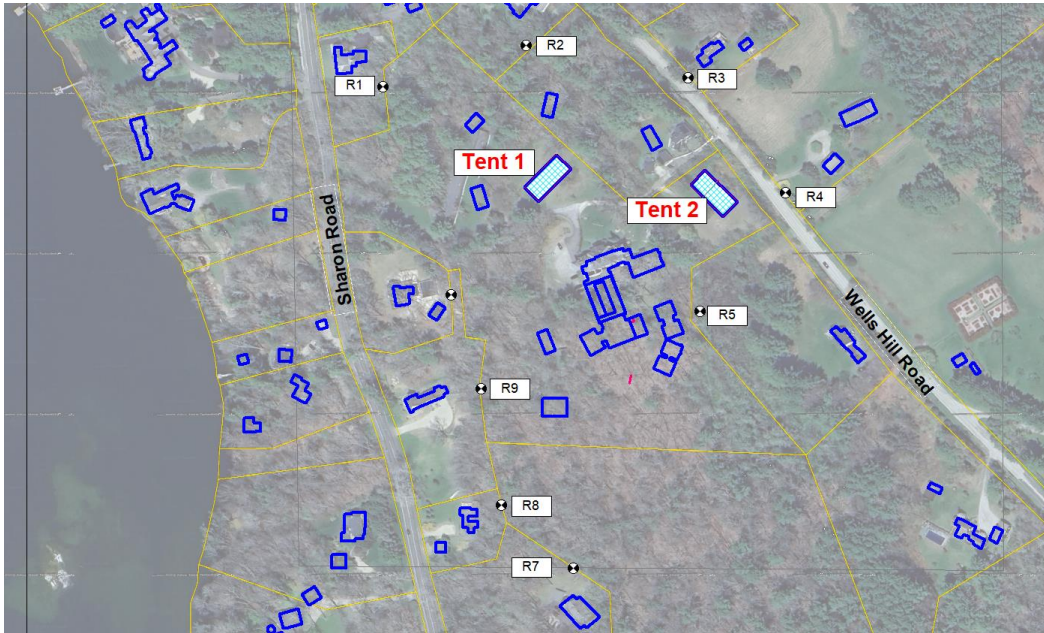


Figure 1. Tent and receptor study locations
 Wake Robin Inn, Salisbury, CT

Source	Sound Pressure Level (dBA)									Design Goal (dBA)
	R1	R2	R3	R4	R5	R6	R7	R8	R9	
Wedding	1	4	11	20	24	14	14	13	6	32*
Tent 1	45	44	48	45	32	36	40	47	52	
Tent 2	48	52	62	69	64	44	37	37	52	

*27 dBA LA_{90,1-hr} measured at SM3 plus 5 dB leading to a Wake Robin Inn music sound goal of 32 dBA.

Table 1. Live wedding band sound levels at receptor locations under the proposed Inn design compared with the similar potential live band sound levels under Tents 1 and 2
 Wake Robin Inn, Salisbury, CT

It is our understanding that the Wake Robin Inn is currently a non-conforming use with no restrictions on outdoor events, including noise levels, capacity, hours of operation, or amplified sound. Cavanaugh Tocci has evaluated event sound levels hosted at the Inn under these existing conditions, specifically with respect to outdoor tented events featuring amplified and live music.

As requested, we have evaluated potential sound levels at nearby residential locations produced during typical outdoor tented events. It is our understanding that such outdoor events are presently permitted at the Wake Robin Inn. Using computer modeling, we have determined that music sound produced during tented events, as reported in Table 1 for Tent locations 1 and 2, could potentially be perceived by residents as well more than a quadrupling from those anticipated under the proposed design before the PZC.

Accordingly, we strongly recommend that the proposed transition to indoor events be supported, as this approach will substantially reduce community disturbances and provide a more compatible outcome for the surrounding neighborhood.

25007 Wake Robin Inn Tent Study 2a.Docx